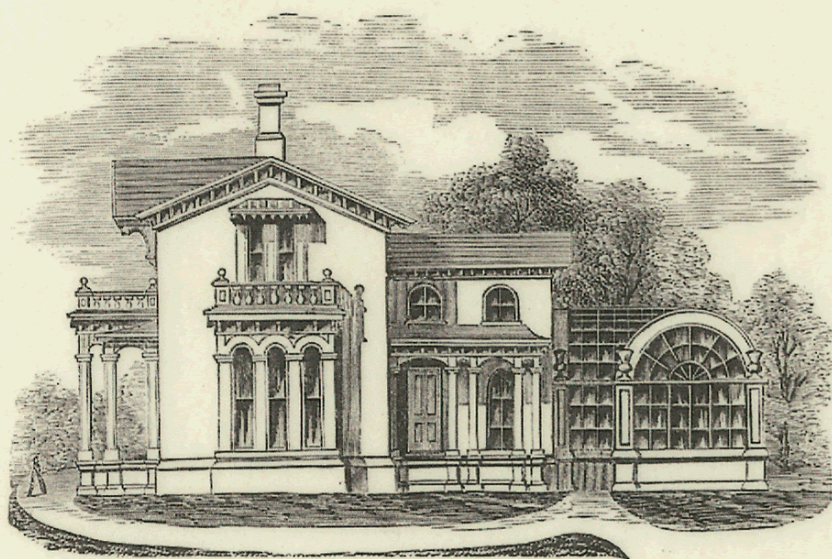


ATWOOD'S  
COUNTRY AND SUBURBAN  
HOUSES.



ILLUSTRATED WITH ABOUT 150 ENGRAVINGS.

BY  
DANIEL T. ATWOOD,  
ARCHITECT.

1871

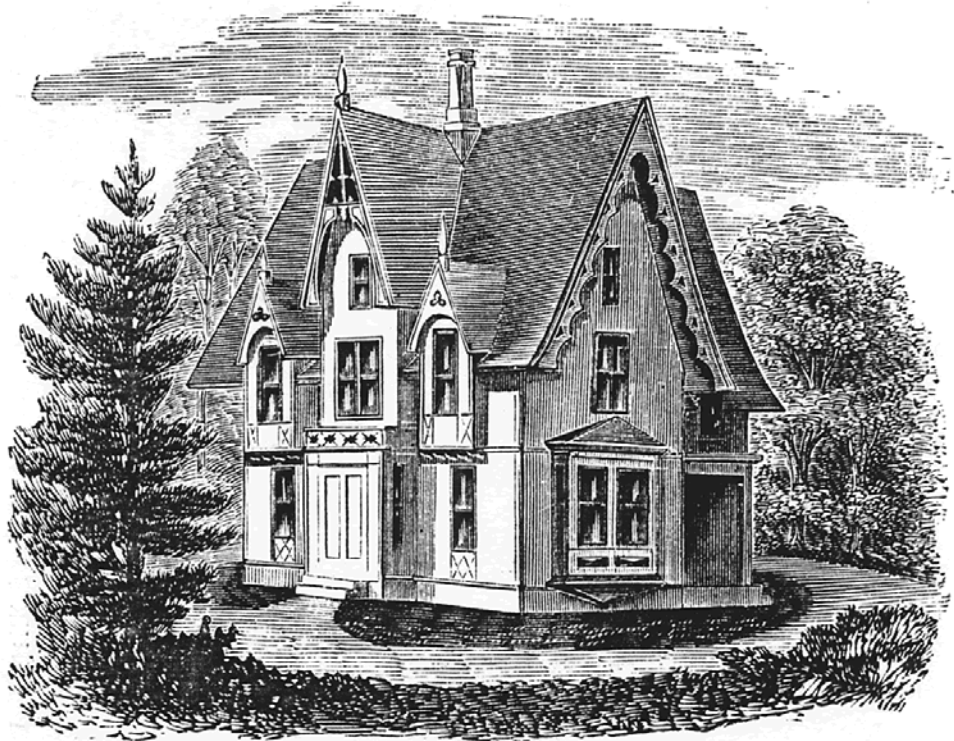
**Illustrations of  
Victorian house design  
and floor plans  
from the 1871 book  
Atwood's  
Country and Suburban  
Houses.**

**Illustrations reprinted by  
Merrymeeting Archives (c) 2004  
[www.thevictorianhouse.com](http://www.thevictorianhouse.com)**

# ATWOOD'S COUNTRY & SUBURBAN HOUSE DESIGNS

ONE	PICTURESQUE STONE COTTAGE
TWO	HALF-TIMBERED COTTAGE
THREE	A WORKINGMAN'S COTTAGE
FOUR	A SEMI-SWISS ORNEE DWELLING
FIVE	CLEMATIS COTTAGE
SIX	A SYMMETRICAL COTTAGE
SEVEN	A SMALL VILLA OF BROWN STONE
EIGHT	A SEA SIDE COTTAGE
NINE	A SUBURBAN STABLE
TEN	A COUNTRY CHURCH
ELEVEN	A COUNTRY CHURCH
TWELVE	A COUNTRY CHURCH
THIRTEEN	A FARM BARN
FOURTEEN	A COUNTRY GENTLEMAN'S STABLE
FIFTEEN	SMALL SUBURBAN STABLE
SIXTEEN	SMALL SUBURBAN STABLE
SEVENTEEN	BOWLING ALLEY
EIGHTEEN	RESIDENCE OF C. E. ROBINS
NINETEEN	A DOUBLE IN THE RURAL GOTHIC STYLE
TWENTY	ITALIAN COTTAGE
TWENTY-ONE	ITALIAN VILLA
TWENTY-TWO	MELROSE COTTAGES
TWENTY-THREE	A PICTURESQUE VILLA
TWENTY-FOUR	BRICK SUMMER RESIDENCE, S. I.
TWENTY-FIVE	A COUNTRY HOUSE
TWENTY-SIX	A SINGLE SUMMER RESIDENCE OF BRICK, BAY SHORE, S. I.
TWENTY-SEVEN	A MECHANIC'S COTTAGE
TWENTY-EIGHT	A COUNTRY HOUSE
TWENTY-NINE	BRONXVILLE HOUSE
THIRTY	A COUNTRY HOUSE
THIRTY-ONE	MR. J. H. POST'S VILLA
THIRTY-TWO	A SUBURBAN DWELLING OF STONE
THIRTY-THREE	LABORER'S COTTAGE

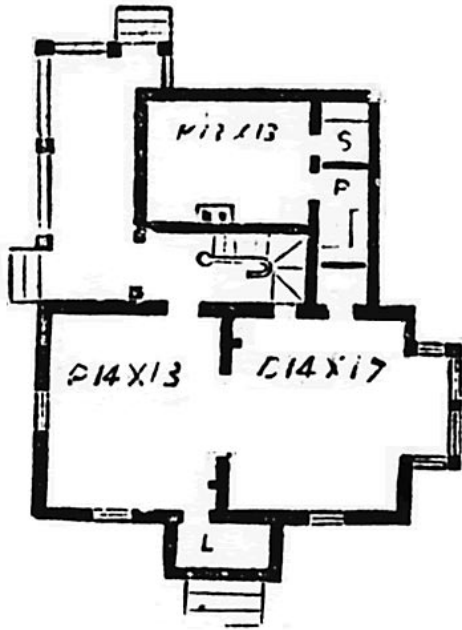
Design One.  
PICTURESQUE STONE COTTAGE.



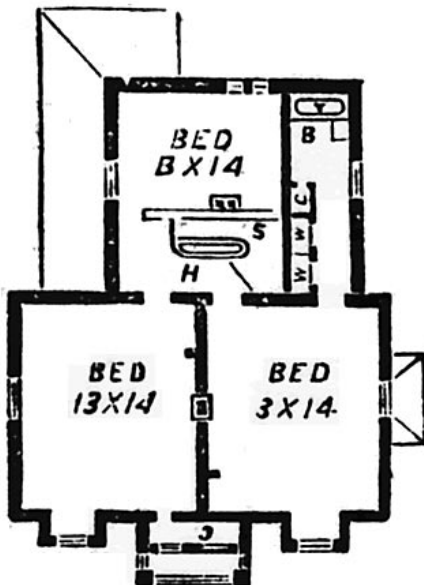
The design we give (No. 1) was executed of stone, at "Highwood Park," Tenaflly Station, on the line of the Northern New Jersey Rail Road, and situate on the western Palisade slope.

The style is a modification of the Gothic, with "bell-cast" roof. The main building is 17 x 30 feet, and the extension 20 x 21 feet. The whole, two stories and attic, with a cellar and a basement kitchen below. Exposure, south-westerly.





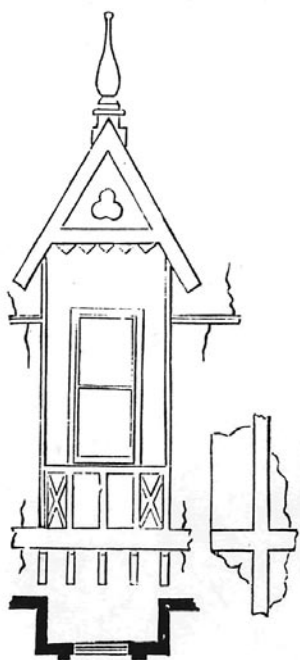
The first floor contains L, lobby, 5 x 8 feet; P, parlor, 13.5 x 14 feet; D, dining-room, 14 x 17.5 feet; H, open hall and staircase; K, kitchen, 13 x 14 feet, besides sinkroom, pantry and china-closet.



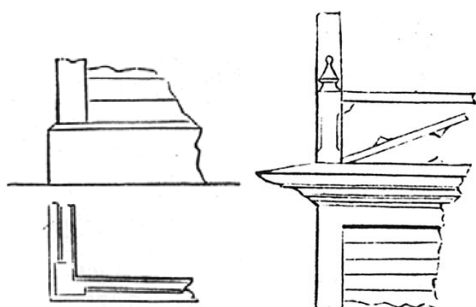
The second floor plan, containing three sleeping rooms, 13 x 14 feet; a bath-room, 6 x 10 feet, with a passage for communication from front to rear rooms, about 8 x 10 and 12 feet. The parlor and dining room are separated by folding doors, and may be *en suite* when required; and are warmed, with the chambers above them, by the furnace.

# Scale Details for Design One.

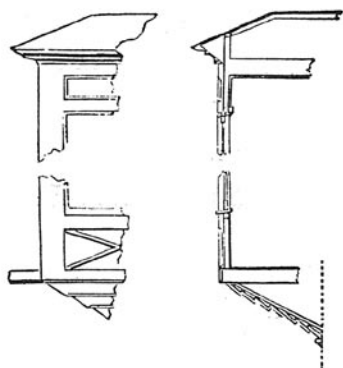
Section, plan and elevation of oriel windows.

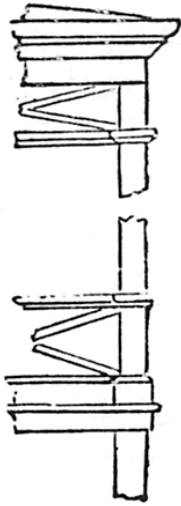


Sill section of lobby entrance, left. Eave and balustrade section of lobby entrance, right.

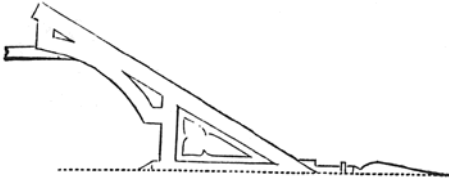


Cross and face section of bay window.

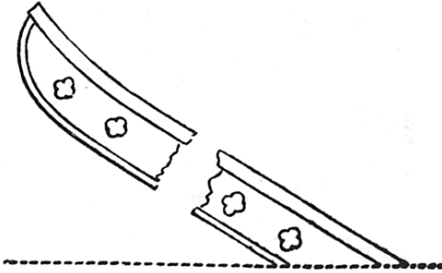




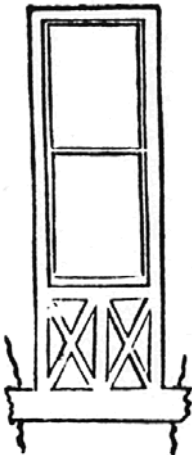
Face section of piazza.



Elevation of gablet verge board and finial.



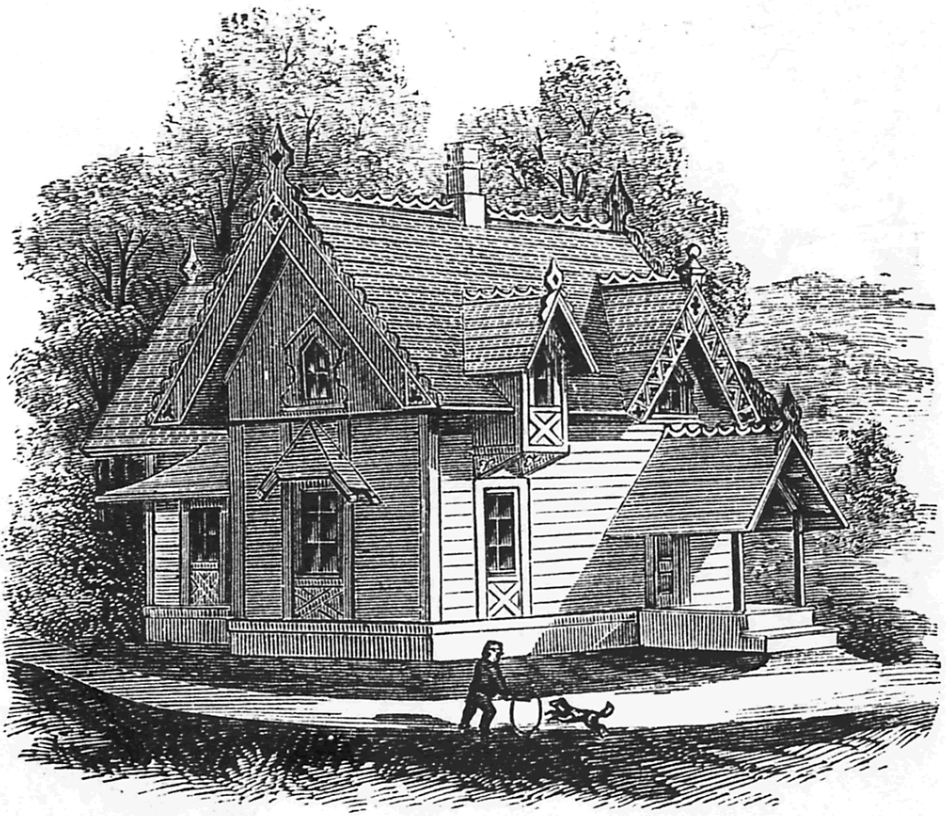
Face section of verge board for the "bell cast" gables, or roof.



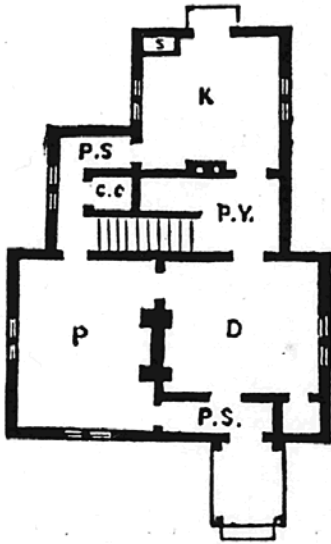
Elevation of a window and diagonal paneling underneath the sill.

## Design Two.

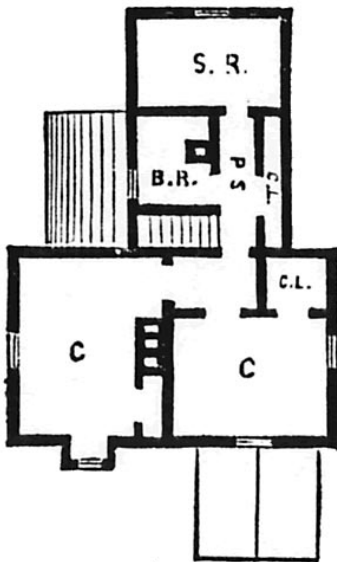
### A HALF TIMBERED COTTAGE.



The complexion and symmetry of the present design was borrowed from one furnished by the author for a lodge or gatehouse for D. D. Chamberlain, Croton Falls, N.Y., in 1862, and copied in *THE WORKING FARMER* of that year from the *Horticulturist*.... It was built four years ago [circa 1867] at Boiling Spring, N.J.

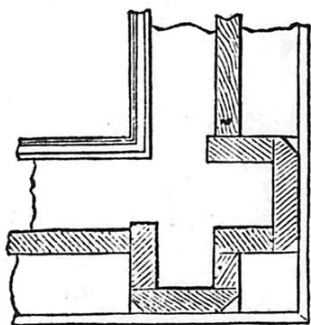


*First Floor.* P, S, passage from the porch, 4 feet wide; P, parlor, 12 x 15 feet; D, dining-room, 11.5 x 13 feet, with a china closet, 3 x 3 feet; P, S, rear passage to kitchen, 4 feet wide, communicating with the stairs to the second floor, and c, c, a coat closet, 3 x 3 feet; K, kitchen, 12 x 12 feet; P, Y, pantry, 6 x 12 feet; S, kitchen-sink and pump.

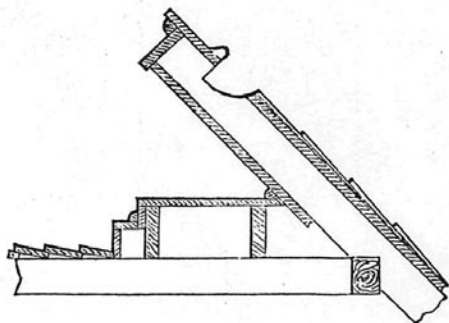


*Second Floor.* P, S, passage, 3 and 5 feet wide, communicating with the bedroom C, 10 x 12 ft., over parlor; B, R, bathroom, 6 x 6 feet; S, R, servants' room, 8 x 12 feet; C, L, are closets.

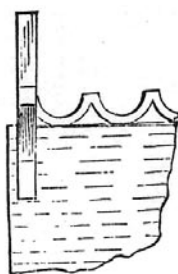
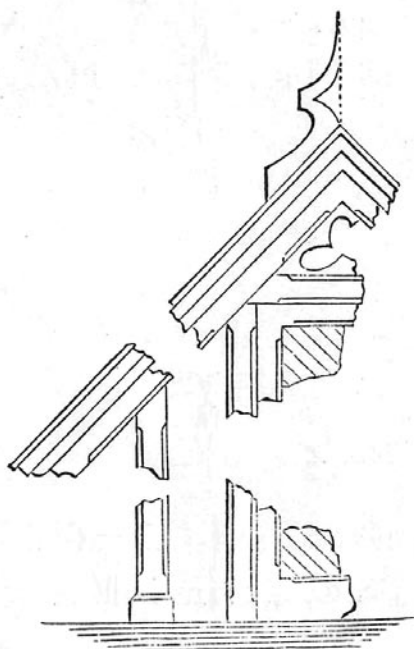
## Scale Details for Design Two.



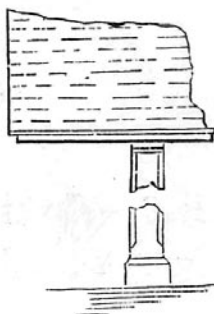
A cross section showing arrangements of timber casings at the corners of the building.

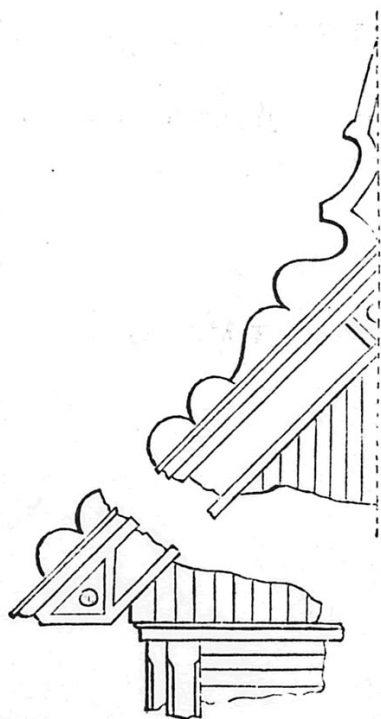


Eave and wall section.

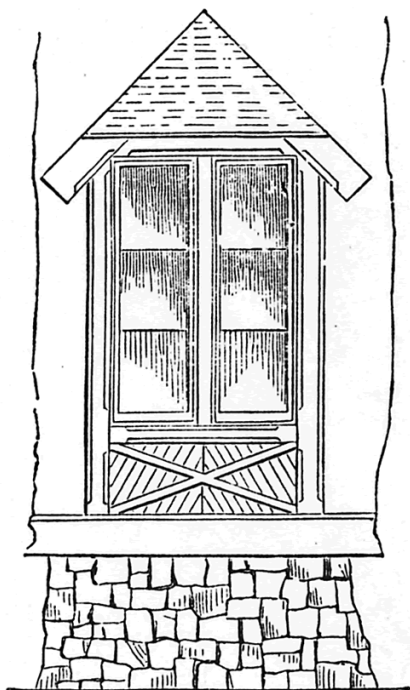
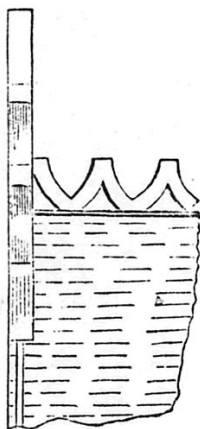


Face and side section, of gable verge board, finial, and pediment.





Face and side section of entrance porch and door.

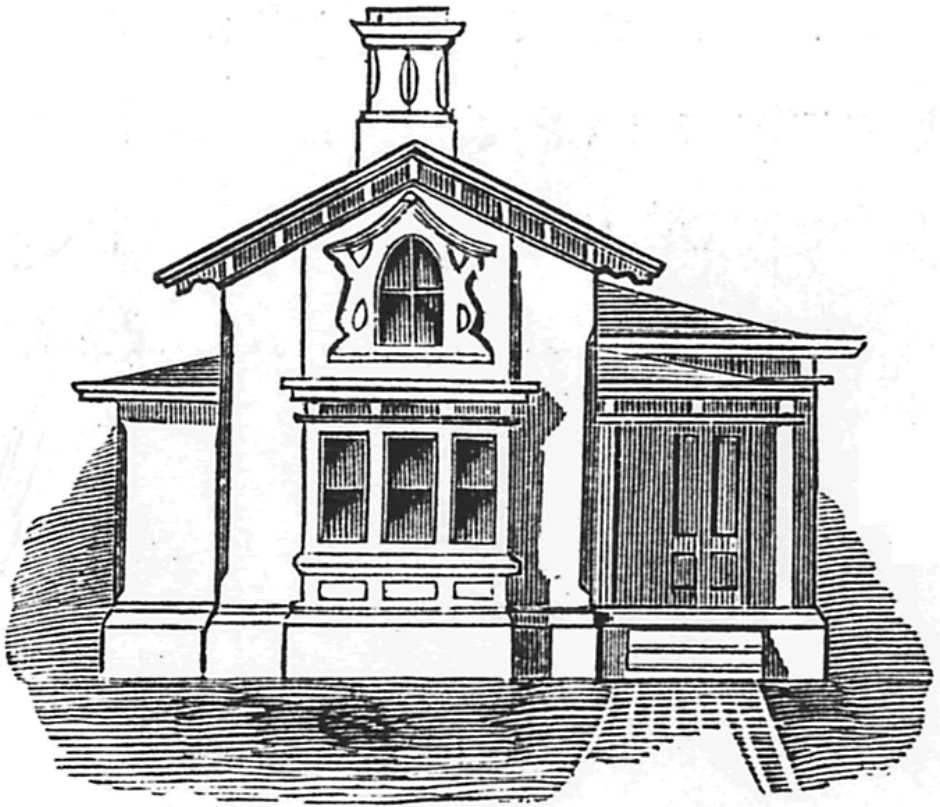


Cross section, and elevation of window and hood.



# Design Three.

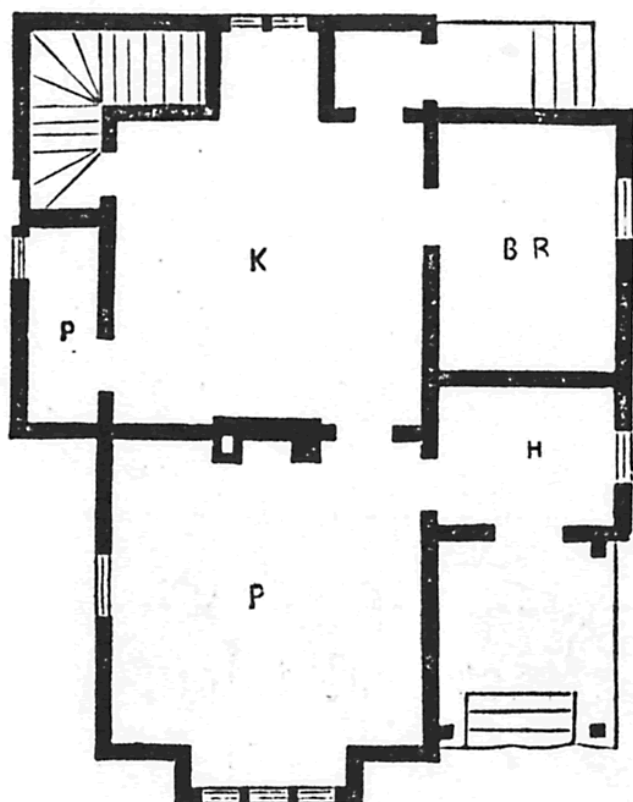
## A WORKINGMAN'S COTTAGE.



*"The Workingman's Cottage deserves some serious consideration!"* was the emphatic declaration of one of the most subtile critics of rural art and taste we ever had. It is not necessary to get them up in villa or mansion dress, but relieve their baldness by the introduction of a few simple details, well proportioned, and fittingly applied. In our plan and elevation, we have attempted to show what a cottage of this class may be with reference to outside looks and internal conveniences.

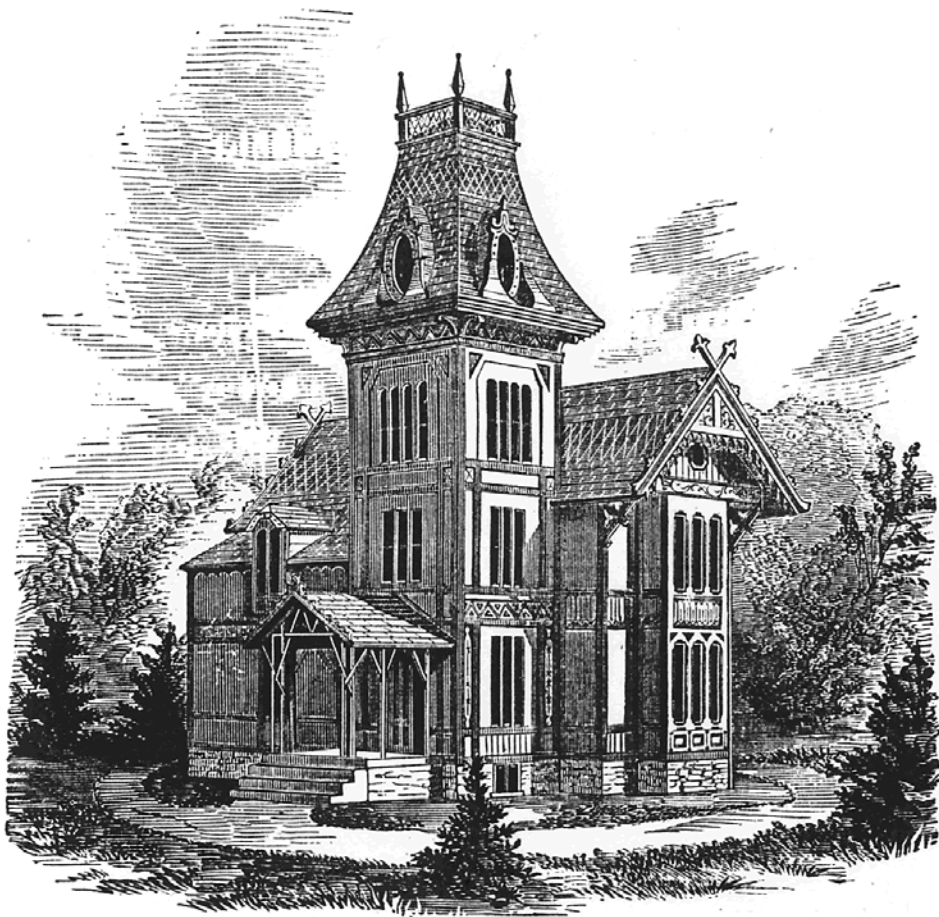
Elevation, 1.5 stories high, showing a porch and bay. First floor, 8 ft. 6 in.; second floor, 8 ft., in the middle, and 5 at the sides.





First floor plan. P, parlor and dining room, 12 x 12 feet; K, kitchen, 12 x 12 feet; B, R, bed room, 7 x 10 feet; P, pantry, 3 x 8 feet; H, hall, 6 x 7 feet. A cellar is provided under the whole of the first floor, 6 ft., 6 in. deep, lighted and ventilated. Second floor contains three bed rooms and two closets.

Design Four.  
A SEMI-SWISS ORNEE DWELLING.



This "Swiss Ornee" Frame Dwelling was built for the Rev. F. F. Ellinwood, at Orange, N. J. Its location is near the Valley Station of the Morris & Essex R. R., on a fine westerly slope opposite the Orange mountain range, and in the immediate vicinity of extensive suburban improvements projected and carried on by the energy and enterprise of a resident of Orange, J. S. Otis.

The external details of the dwelling, though not clearly indicated in the view, are quite ornate in character, and as a whole add largely to the embellishments and improvements of the neighborhood.

The main building is 17 x 36 feet with a dormer lean-to, 9 feet 6 inches wide, which covers the study and a part of the hall. The extension on the opposite side is 16 x 18 feet. The tower, which is a prominent and useful feature, is 12 x 12 and 44 feet high, and located to cover a portion of the hall and command an extensive view of the Orange mountain, "Llewellyn Park," and portions of the upper and lower valley. The stories are respectively 10, 9, and 8 feet. The stories of the tower are 9 feet high each, above the first, which is 10 feet. The dwelling contains fourteen rooms.

#### First Floor.

H, Hall, 11 x 19 feet.

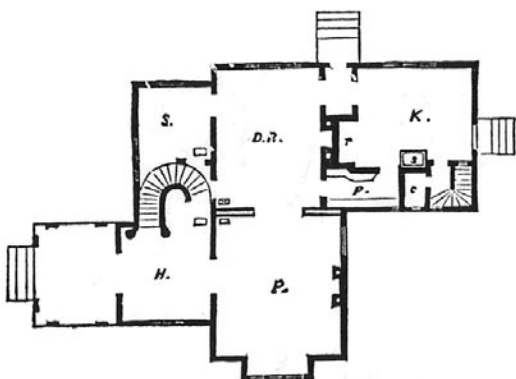
P, Parlor, 16 x 17 feet.

D, R, Dining Room, 13 x 16 feet.

K, Kitchen, 12 x 14 feet.

P, Pantry, 5 x 9 feet.

C, Store Closet, 3.5 x 5 feet.



#### Second Floor.

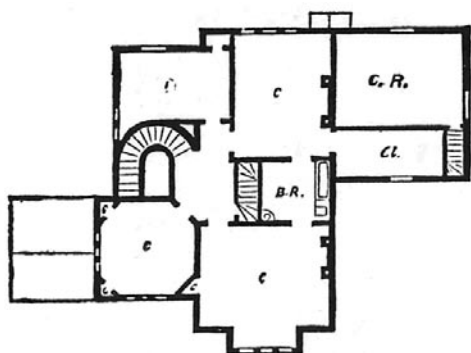
C, C, C, C, Sleeping Rooms,

13 x 15, 11 x 11, 9 x 13, 12 x 14

B, R, Bath Room, 8 x 9 feet.

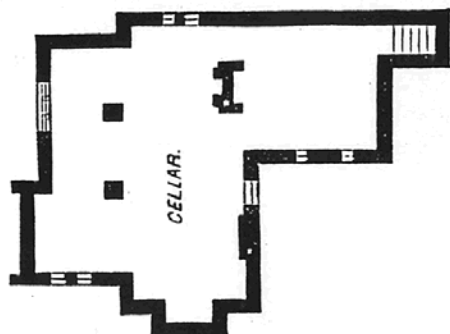
C, R, Children's Room, 12 x 15 feet.

C, L, Large Closet, 5.5 x 12 feet.

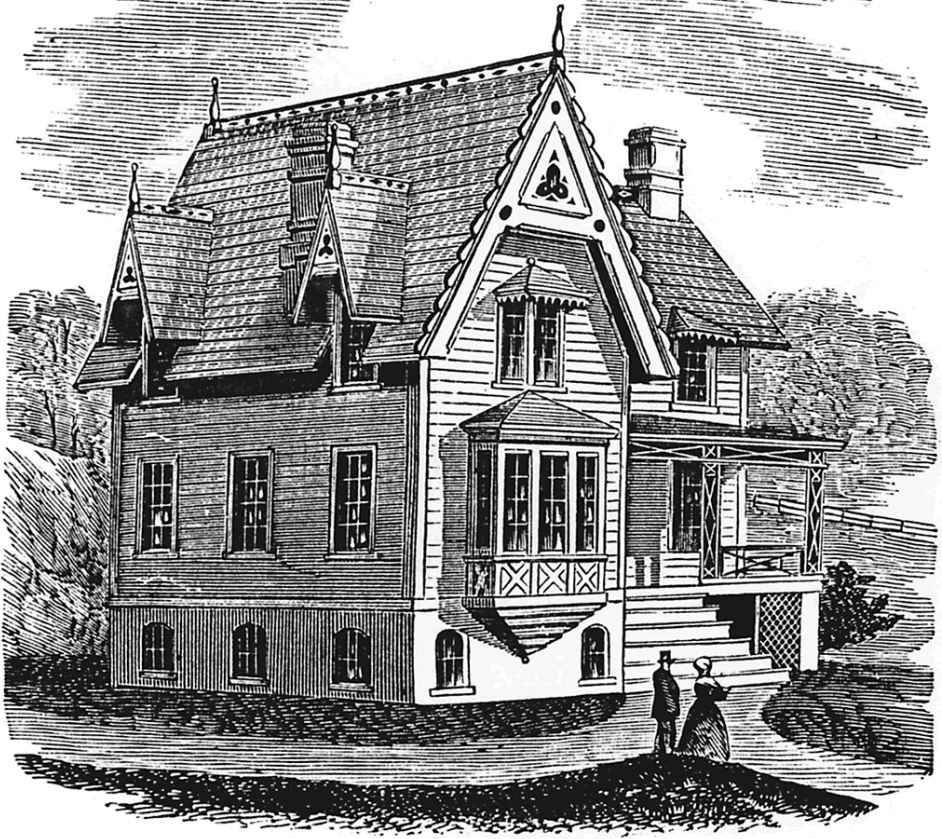


#### ATTIC.

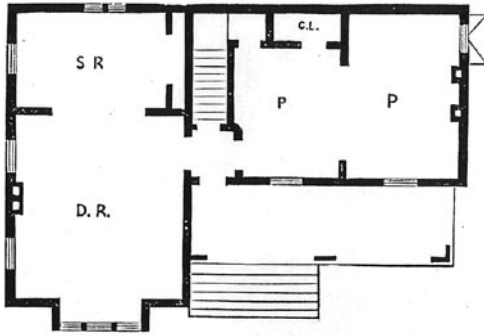
The attic contains three rooms, about 10 x 12 feet, and a tower-loft, 10 x 10 feet.



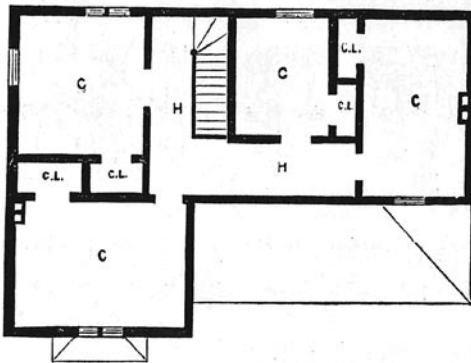
Design Five.  
CLEMATIS COTTAGE.



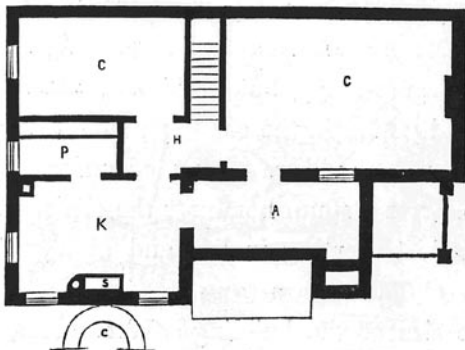
This cottage was remodeled in 1864 for Jacob Hays, Esq., at Inwood, N.Y., on the Hudson. The main portion, presenting the gable to the front, was built new from the foundations. Naturally, the dwelling at its base, is shut in on the flank, by trees and shrubs, and has a high background of rugged hills; and is not so evenly graded about the front as represented in the view.



First floor. Rooms as follows: D, R, Dining Room, 15 x 18 feet; S, R, Sewing Room, 10 x 15 feet, with closet; P, P, double Parlor; 15 x 20 feet, with closet. The front lobby, which opens into either room, up stairs and on the porch, is 5 x 6 ft., and tessellated. The back entry communicates with the passage and stairs, to the kitchen and cellar in the basement.



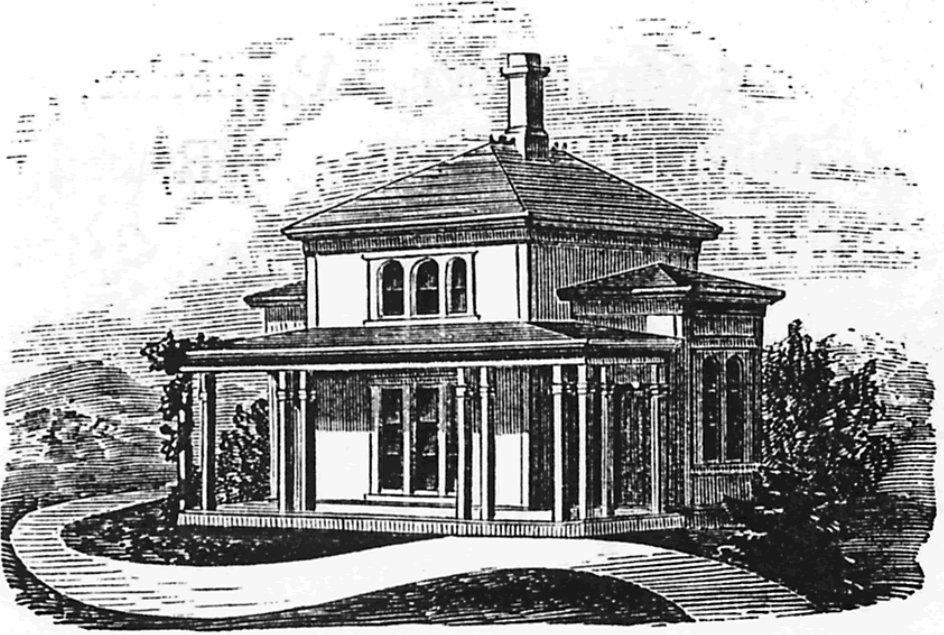
Chamber floor. C, C, tow gable end chambers, 11 x 15 feet, with closets; C, C, two back chambers, 11 x 12 and 10 x 10 feet, with closets; H, hall and passage, 4 feet wide. This hall communicates with two rooms in the attic for servants.



Basement. K, kitchen, 11 x 14 feet, with pump and sink; P, large pantry; C, C, cellars; A, area, underneath the piazza floor, where there is a water closet.

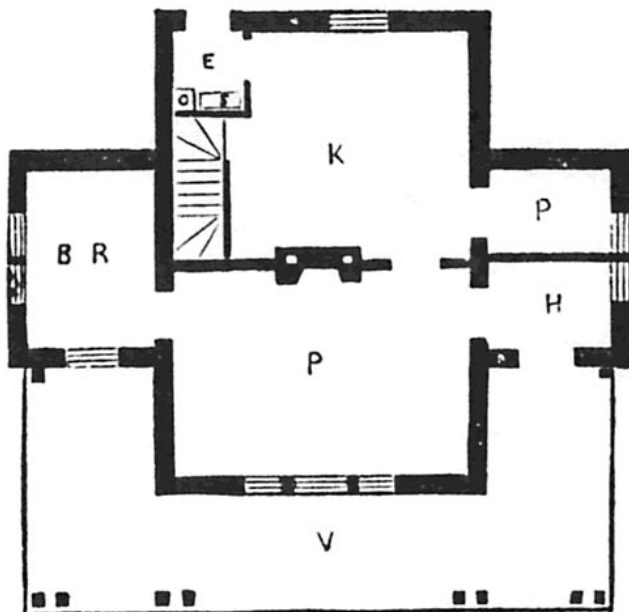
## Design Six.

### A SYMMETRICAL COTTAGE.

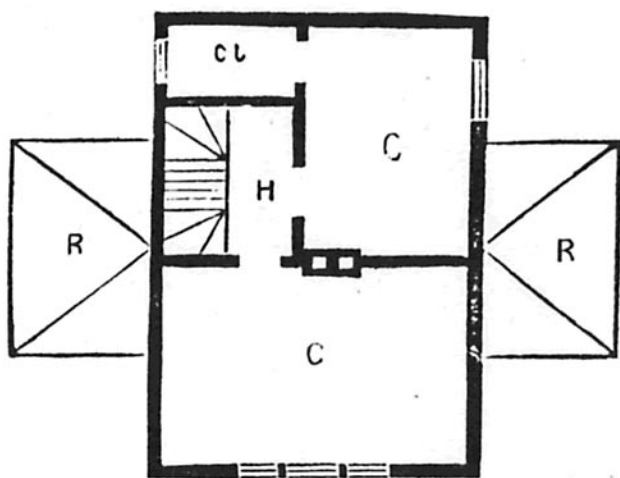


This view is of a small symmetrical cottage, designed for a gate-lodge, but adapted to almost any situation in the country; would do well for a farm, or village tenant, or make a comfortable and tasteful home for the clerk or mechanic just starting in life.

The size of the building is 16 x 26 feet, two stories. First story, 9 feet, second story, 8 feet high, with a cellar 6 feet high, under the whole. The side wings which break the uniformity of outline, giving it a symmetrical cast, are 8, 6 x 13 feet. The piazza is 6.5 feet wide, with a simple open timber roof, and in *lieu* of square posts could have rustic ones of cedar or hemlock from the woods.



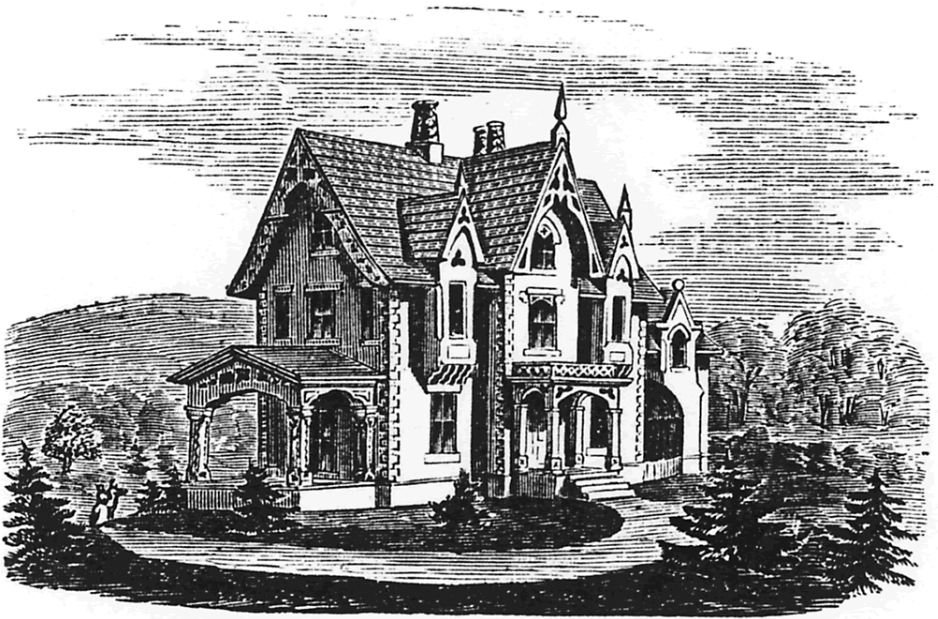
First floor. P, parlor, 12 x 15 feet; K, kitchen, 12 x 15 feet; B, R, bed room, 8 x 12 feet; H, lobby or entry, 6 x 8 feet; P, pantry, 6 x 8 feet.



Second floor, has two bedrooms, one 12 x 15 feet, and one 9 x 12 feet; C, L, closet, 4 x 6 feet; H, hall, 6 feet wide.

## Design Seven.

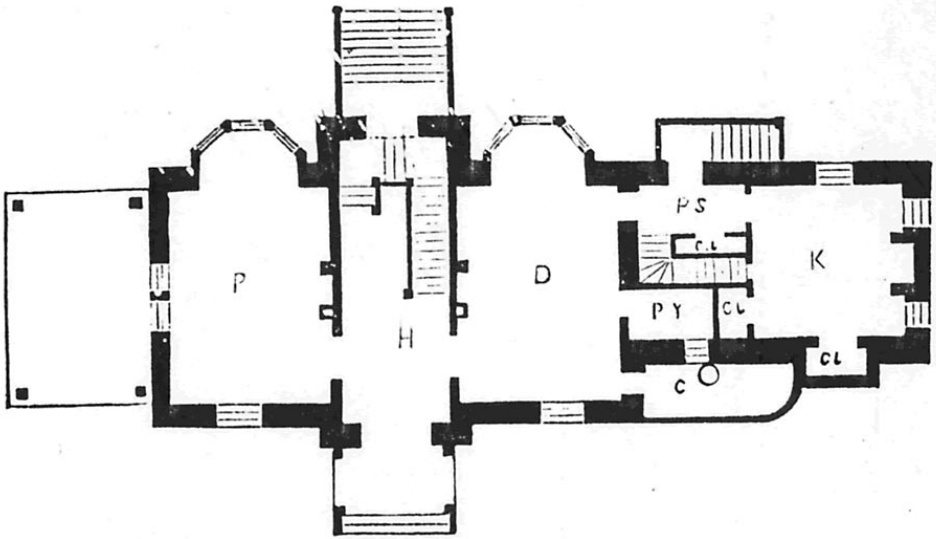
### A SMALL VILLA OF BROWN STONE.



Design 7, is the first of a series made for J. S. Otis, of Orange, N.J., in accordance with a plan for the improvement of his property. It was designed for a family residence, and to be built of Jersey brown stone, which is abundant in the mountain ledges of Orange.

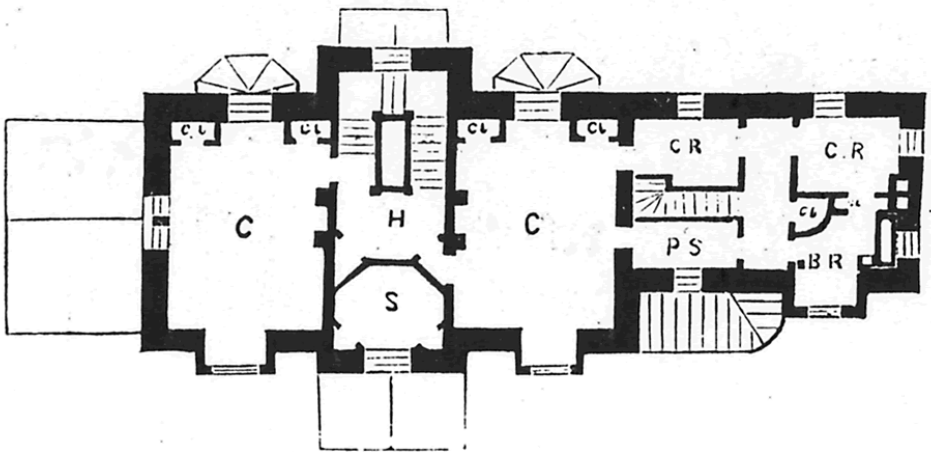
This is a perspective view of the dwelling in the Semi-Gothic style, representing a frontage of 80 feet, and a depth of 30 feet. The stories are, first, 10 feet 6 inches; second, 9 feet 6 inches; attic, 9 feet in the middle. Basement, 8 feet 6 inches high.





*First Floor.*

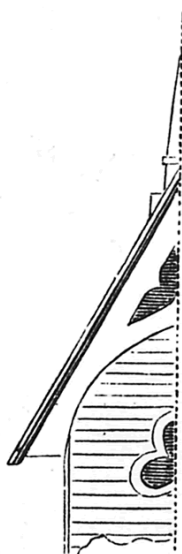
First floor. H, hall, 10 feet wide; P, parlor, 14 x 20 feet; D, dining room, 14 x 20 feet; K, kitchen, 15 x 15 feet; C, L, closets; P, Y, large pantry; C, conservatory from dining room.



*Second Floor.*

Second floor. H, hall, 10 feet wide; S, owner's study, 10 x 10 feet; C, C, principal chambers, 14 x 20 feet; C, R, children's rooms, 8 x 10 feet; B, R, bath room, 10 x 12 feet; C, L, closets.

# Scale Details for Design Seven.

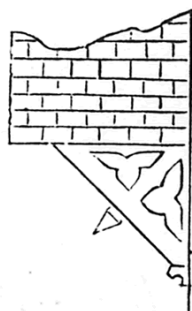


*Fig. 4.*

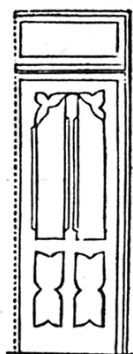
Fig. 4.—Face section of oriel window. Scale,  $\frac{1}{8}$  of an inch for one foot.



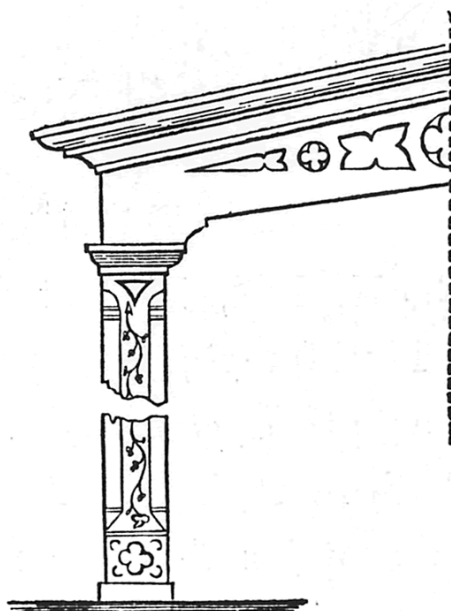
*Fig. 5.*



*Fig. 6.*



*Fig. 7.*



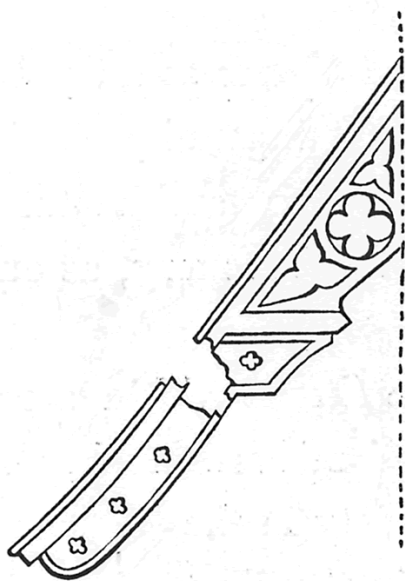
*Fig. 8.*

Fig. 5.—Spandrel panels for window heads. Scale,  $\frac{1}{8}$  of an inch for one foot.

Fig. 6.—Hood bracket. Scale,  $\frac{1}{8}$  of an inch for one foot.

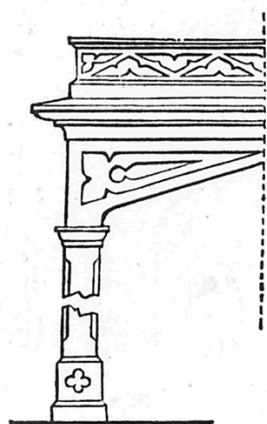
Fig. 7.—Elevation of front door. Scale,  $\frac{1}{8}$  of an inch for one foot.

Fig. 8.—Half elevation of pavillion. Scale,  $\frac{1}{8}$  of an inch for one foot.



*Fig. 9.*

Fig. 9.—Face section of verge board. Scale,  $\frac{1}{8}$  of an inch for one foot.

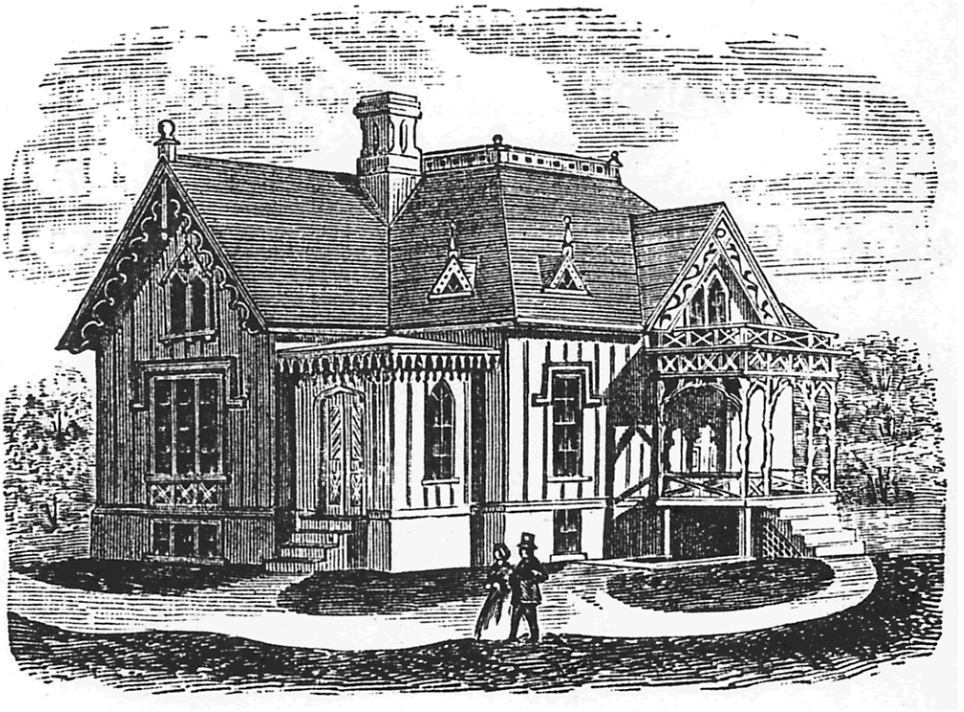


*Fig. 10.*

Fig. 10.—Half elevation of front porch. Scale,  $\frac{1}{8}$  of an inch for one foot.

## Design Eight.

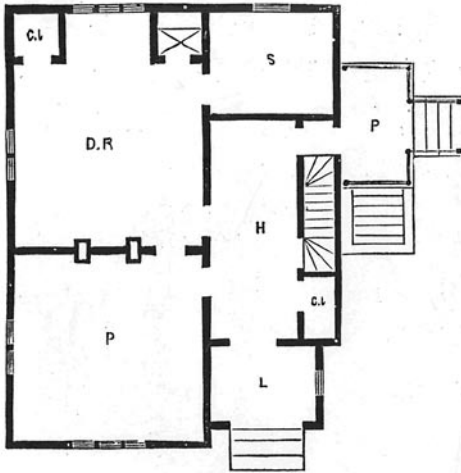
### A SEASIDE COTTAGE.



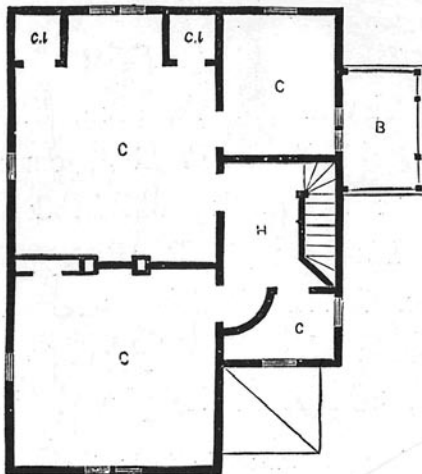
This seaside cottage was built for C. E. Robins, Esq., at Eltingville, Staten Island. It is situated about one thousand feet from the shore of the lower Bay of New York, looking out upon Sandy Hook, the highlands of Nevesink, and the ocean beyond, and in full view of every vessel that enters or leaves the harbor.

The grounds (some nine acres) are tastefully laid out, and the large amount of fruit and ornamental planting--the former of the finest varieties, arranged in quincunx, each row in the order of ripening--and the latter judiciously chosen and effectively disposed in groups and masses--when a few years older, will be very effective as well as valuable.

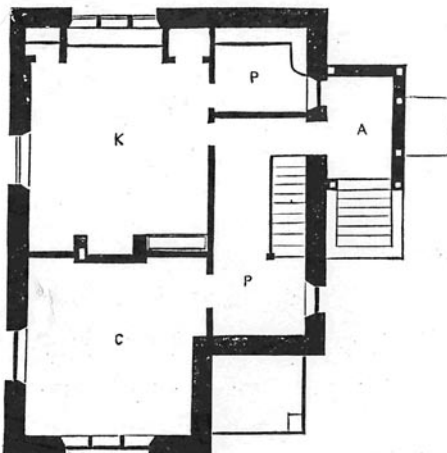
The dwelling is 25 x 35 feet; 1.5 stories high; 1st story 9 feet; 2nd story, 8.5 feet at the plates.



The plan represents the *first floor*, enclosing an area which includes the extent of the building in compact form, 25 feet front, by 35 feet deep. L, lobby, 6 x 6 feet; P, parlor, 15 x 15 feet; D, R, dining room, 15 x 19 feet, with closet, 3.5 feet, and a waiter; S, study, 8 x 9 feet; H, hall, 8 x 17 feet; P, porch, 6 x 10 feet.



*Second floor.* H, hall; C, C, C, bedrooms, 15 x 15, 15 x 19, and 8 x 10 feet respectively; B, balcony, 6 x 10 feet, railed; C, L, closets, 3.5 feet each.

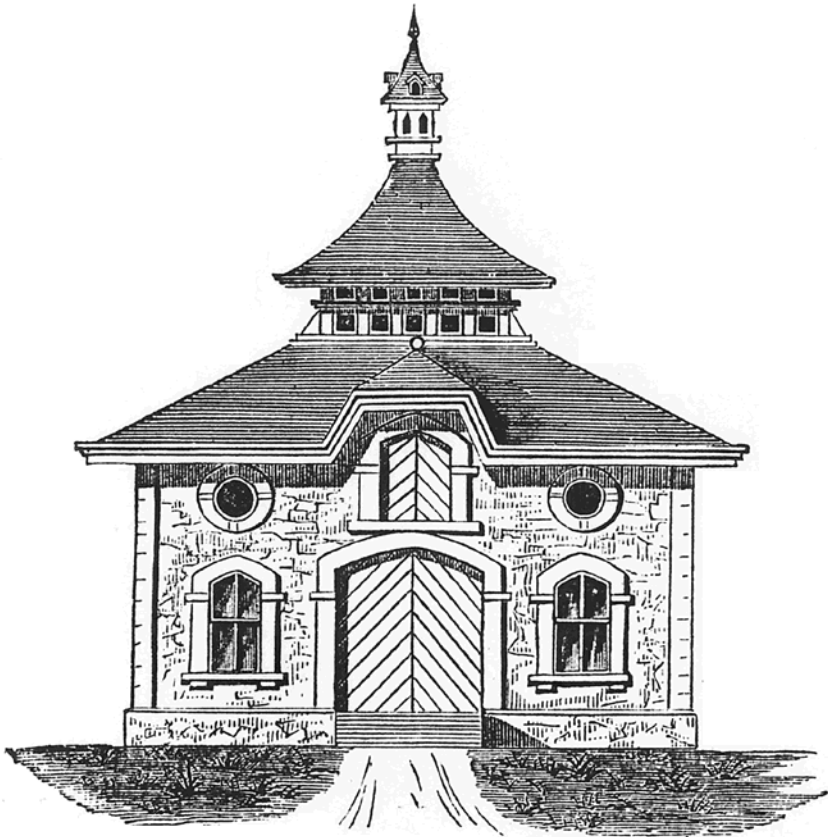


*Second floor.* A, area, 5 x 8 feet; P, passage or hall, 7 x 17 feet, communicating with cellar and milk-room in the front; K, kitchen, 14 x 18 feet; P, pantry, 7 x 7.5 feet; C, cellar, 13 x 13 feet.\*

\*Some changes were made, including more closet room, than the plan shows.

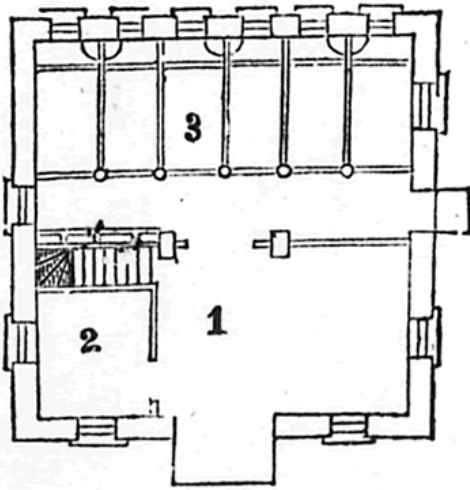
# Design Nine.

## A SUBURBAN STABLE.



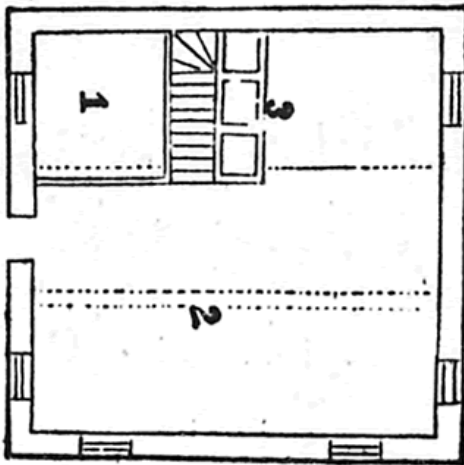
This stable design gives evidence of a more careful study than such buildings commonly receive. It was originally to have been built of concrete, with hard burned brick facings, window and door jambs, and quions; but on account of the difficulty experienced in obtaining the labor sufficiently skilled in that class of work, it was executed in wood with vertically boarded and battened walls, and slate roofs.

The building is 30 x 30 feet, and 16 feet high from the water-table to the plates. The roof is fixed at a quarter pitch, and projected boldly at the eaves, and is surmounted with a concave roof ventilator, 12 x 12 feet, and upon this a wren turret.



- 1, Coach Room, 14.5 x 20 feet.
- 2, Tool Room, 8 x 9 feet.
- 3, Stalls, 4.5 and 5 x 8 feet, and passage 5 x 29 feet.

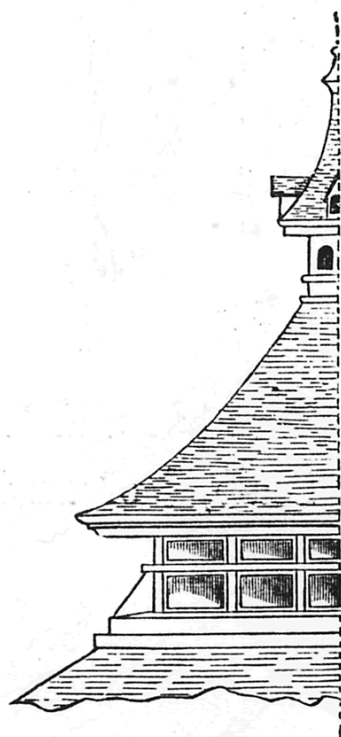
*First Floor.*



- 1, Man's room, 8 x 9 feet.
- 2, Loft, 20 x 29 feet, 6 feet at the plates, and 15 feet high under the ventilator.
- 3, Feed Bin.

*Second Floor.*

## Scale Details for Design Nine.



*Fig. 4.*

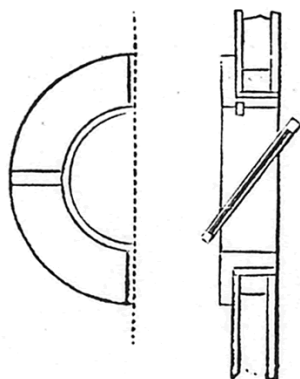
Fig. 4.—Elevation of one half the ventilator.  
Scale,  $\frac{1}{8}$  of an inch for one foot.



*Fig. 5.*

Fig. 5.—Eave section, showing projection, &c., of cornice. Scale,  $\frac{1}{8}$  of an inch for one foot.





*Fig. 6.*

Fig. 6.—Vertical section and half face view of loft windows. Scale,  $\frac{1}{4}$  of an inch for one foot.

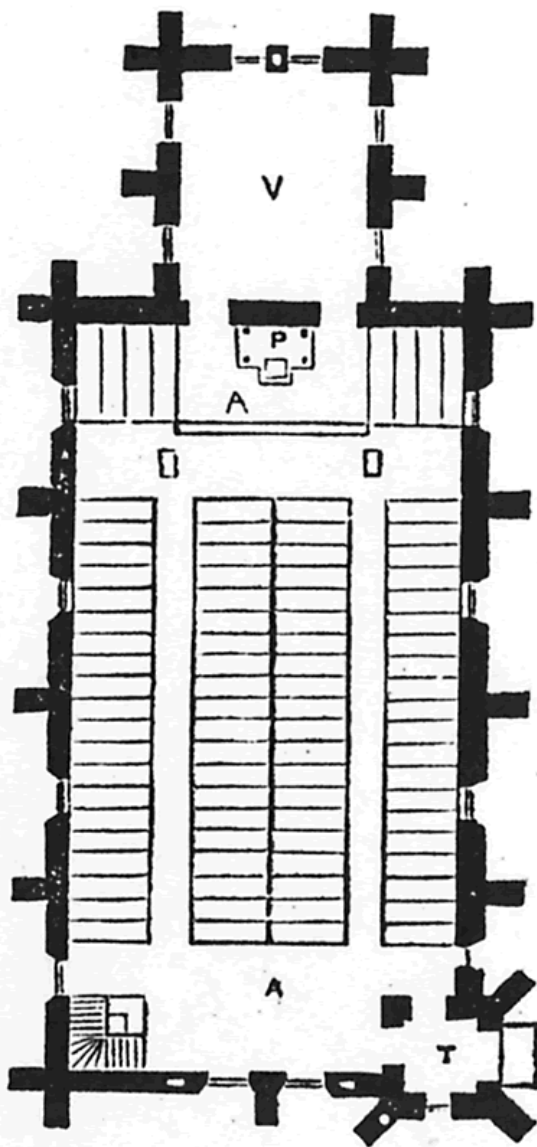
# Design Ten.

## A COUNTRY CHURCH.



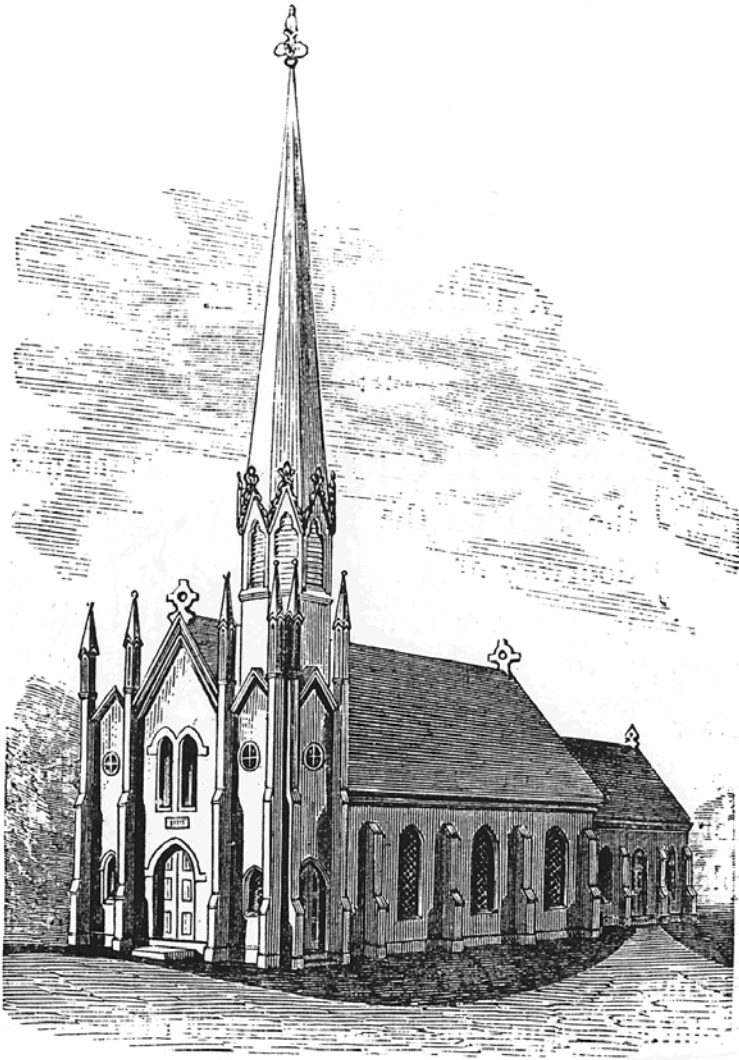
We offer the accompanying design of a Country Chapel, with lecture-room attached, as a fair type of what such structures should be. It at least fills our conception of the harmonious in country life and worship.

The design was the first prepared for the Carmel M. E. Church, Putnam Co., N. Y., but being deemed inadequate to the wants of a large and populous parish, was superseded by a larger one on the same ground plan, and executed in stone, quarried from the neighborhood.



The plan, is 40 x 70 feet, for auditorium and 16 x 24 feet for lecture and schoolroom. The audience room will seat 350 to 400 persons. There are no galleries, only an organ and choir loft over the lobby. The interior is finished in chestnut, oiled; the roof open, and ceiled from wall plates to ridge pole.

Design Eleven.  
A COUNTRY CHURCH.



DREW M. E. CHURCH. Thus stands the title on the mural tablet over the doorway of a church edifice of pleasing proportions and excellent construction in the beautiful village of Carm-

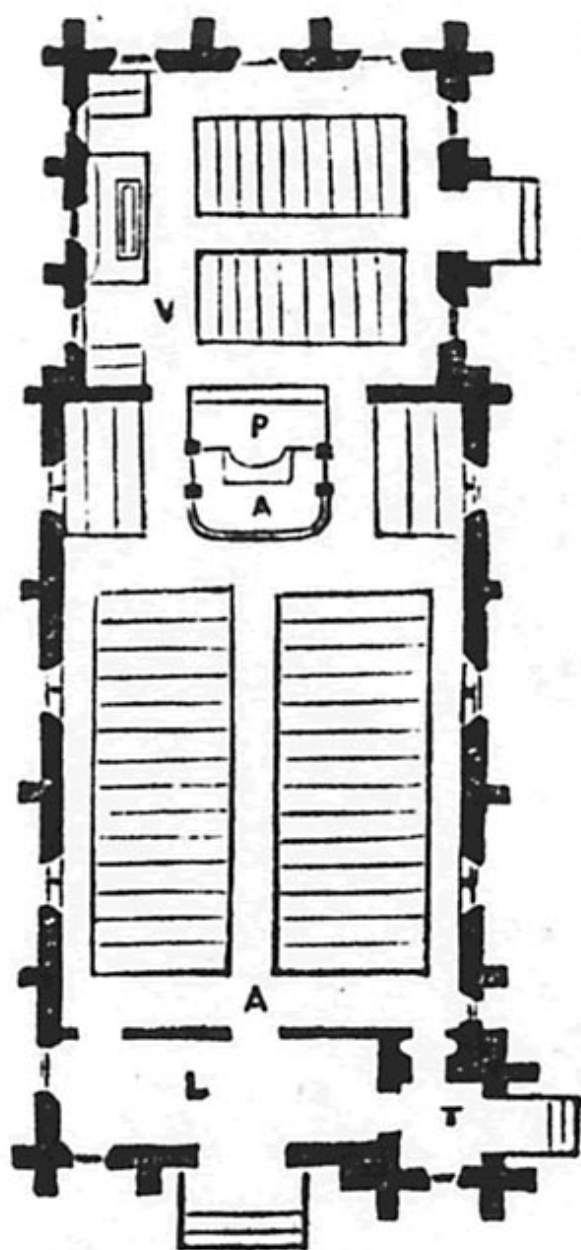
el, Putnam Co., New York--built mainly by the munificent contributions of its founder Daniel Drew, Esq., for the Methodist Episcopal Parish of that place.

It is chiefly interesting to the architect and connoisseur, as an example of how the earliest pointed Gothic architecture, devoid of decoration may be economically adapted to the needs of an American Parish--serve the interests of congregational worship of to-day, and at the same time preserve the essential part of that sentiment of structural worship and aspiring praise developed through the progress of church art, afrom the opening portal of the first Christian church, to the consummated idea of temple worship, realized in those grandly overarching vaultings of the Gothic name.

In this example the form has been harmonized to meet what was considered desirable acoustic properties, and the wants of that individual parish.

The proportions of the Church are, for the length a little over a cube and one half, or 70 feet; and the geight about a cube, or 44 feet, from the auditorium to the centre of the arched ceiling. The width is also 44 feet, giving an oblong plan; a vestry room at the rear, 30 x 40 feet; and a clear and spacious audience room, unobstructed by columns, and spaned by a tudor-arched ceiling, supported at intervals of 12 feet, by heavy timbered principal raters exposed below the ceiling, stained and varnished.

The interior of the church is finished plainly yet handsomely, and in keeping with the simplicity of the exterior.



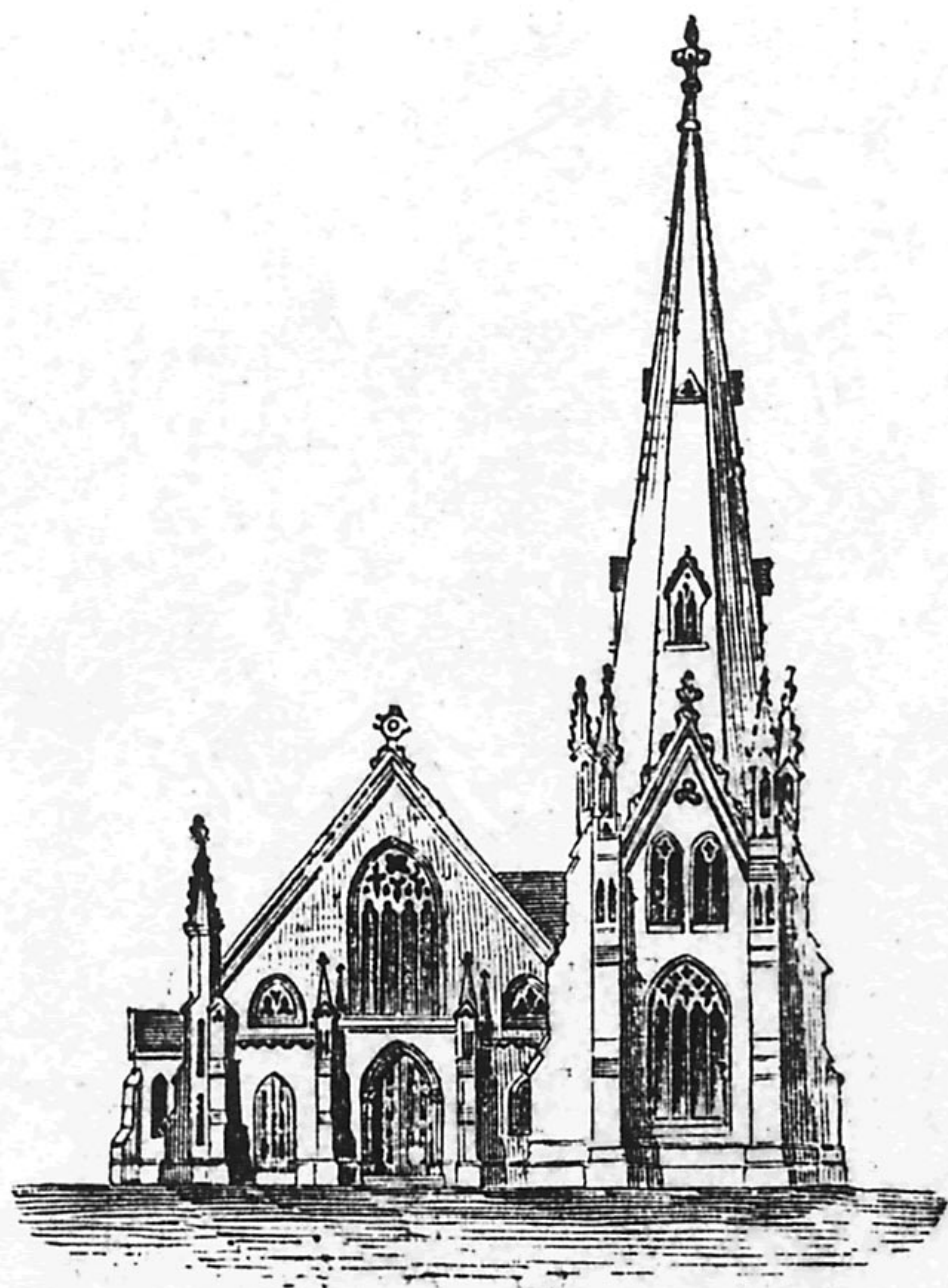
The pulpit and altar are finished with black walnut, with a frescoed reredos at the back.

Over the lobby opposite is the organ loft, communicated with from below. The ceilings are richly frescoed in panels between the principals, on a light blue ground and the side walls colored a light warm drab in distemper. Windows are filled in with stained glass and the trefoil and quater-foil apertures with flamboyant patterns, by Hamilton & Son. Pews are of pine, with black walnut trimmings, oiled and varnished. Aisles are paved with Minton's encaustic tiles. For heating and ventilating ample provisions have been made, and the building thus affords the means of worship to a congregation of from 500 to 700 persons.

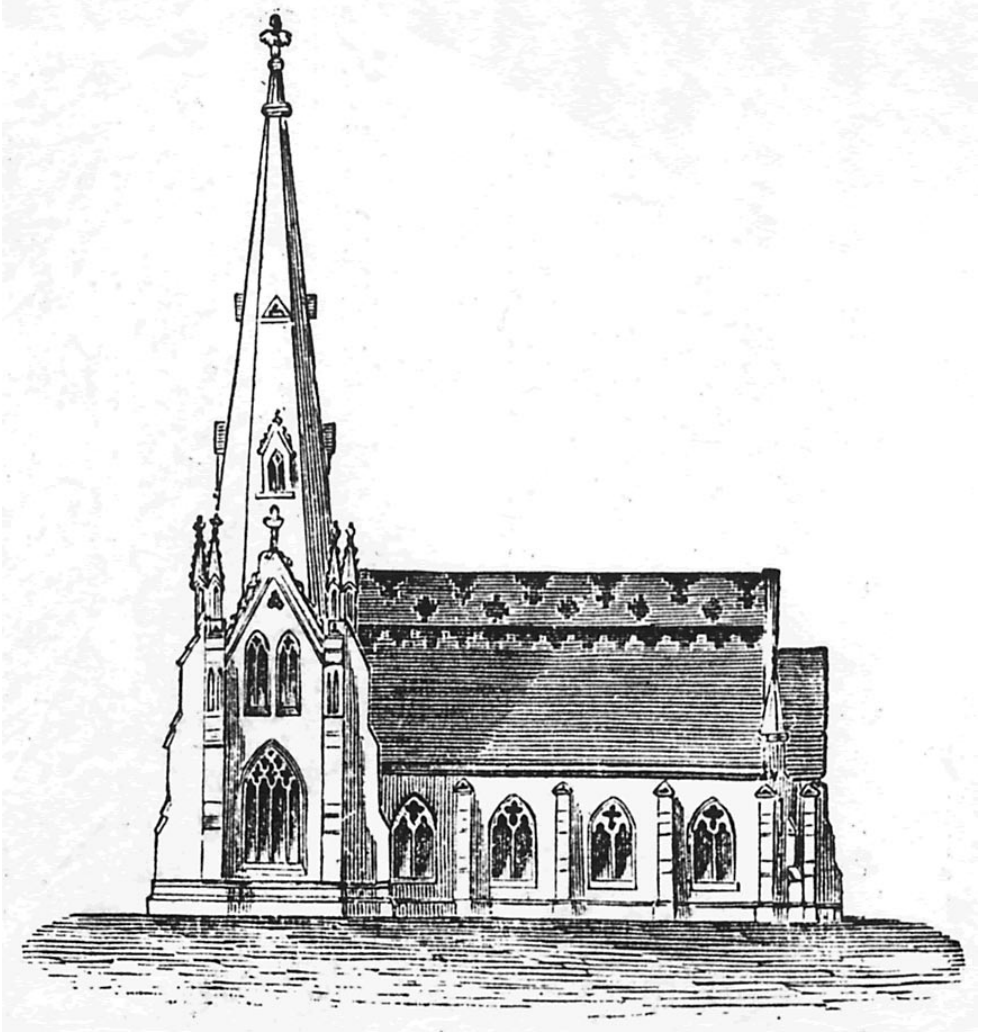
Externally, the prominent feature is the tower and spire, on the right front corner, 100 feet high, forming one of the side entrances to the lobby, and a conspicuous mark for miles around and in pleasing contrast with the strangely picturesque scenery of the hills.

An attempt to symmetrize the front will be observed on the left of the middle entrance by carrying up a buttressed wall vail, a practice not uncommon, but questionable in an estetic sense, in so small a building. The walls of the building were built entirely of stone, in random course, with hammered stone dressings, taken from the immense beds of drift rock and granitic nuclei existing in the neighborhood.

Design Twelve.  
A COUNTRY CHURCH.



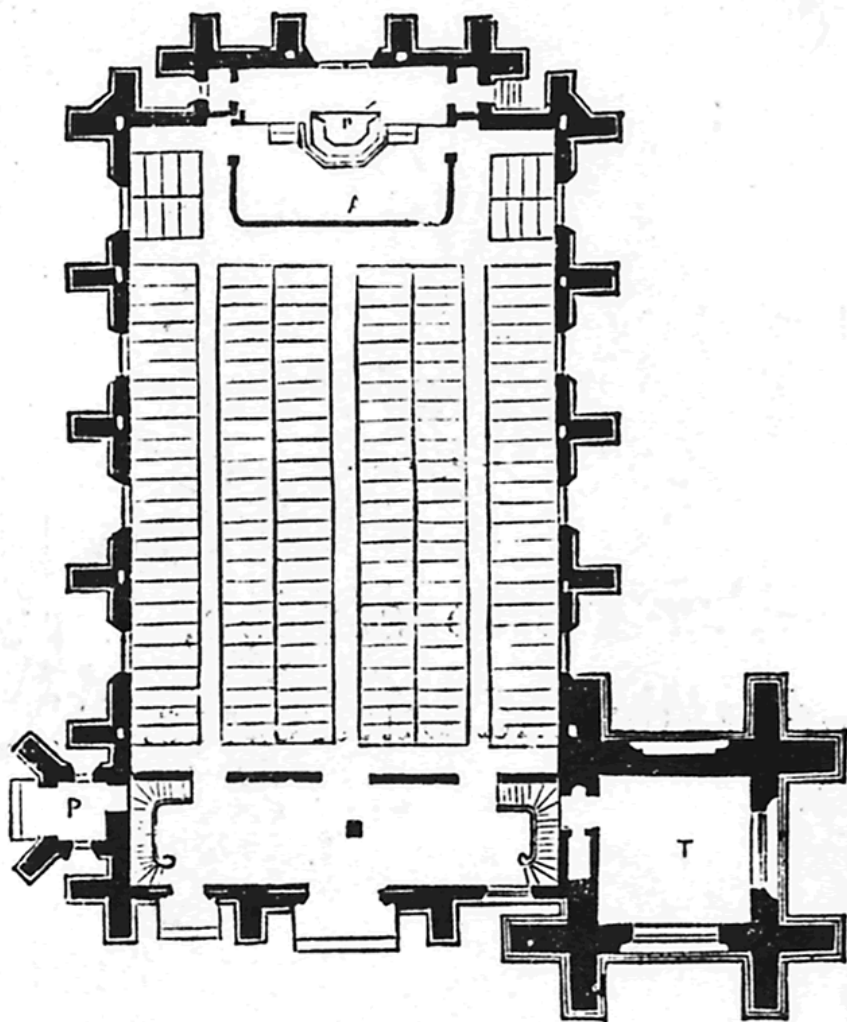


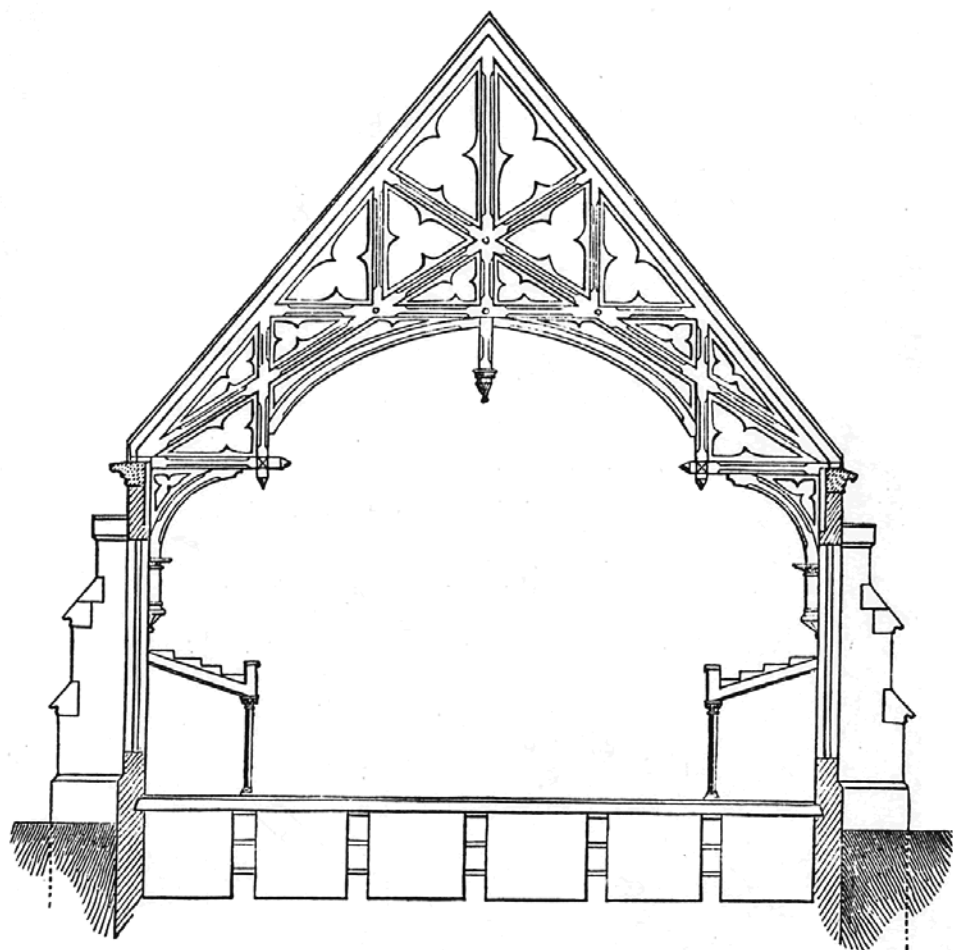


Front and side elevation of the Presbyterian Parish Church, at Goshen, Orange Co., N. Y.

Outside size of Church, 66 x 109 feet. Outside of tower, 30 x 30 feet. Height of side walls, 33 feet, and height of gable ends from the ground level to apex, 70 feet. Height of the tower and spire inclusive, 180 feet, or six times its diameter from the ground line to the apex, or finial. The audience room will be 62 x 90 feet, and covered with an open timbered roof. Lobby 15 x 62 feet. There will be an altar recess as per plan, with an altar window. Also an organ loft and side galleries.

Plans for a chapel accompanying the church plans, providing for a lecture room on first floor 36 x 50, and a school room on 2d floor, 36 x 58 feet. All in the pointed Gothic Style of Architecture. The Church plans are drawn to a scale for ground plan of on eighth of an inch for one foot.

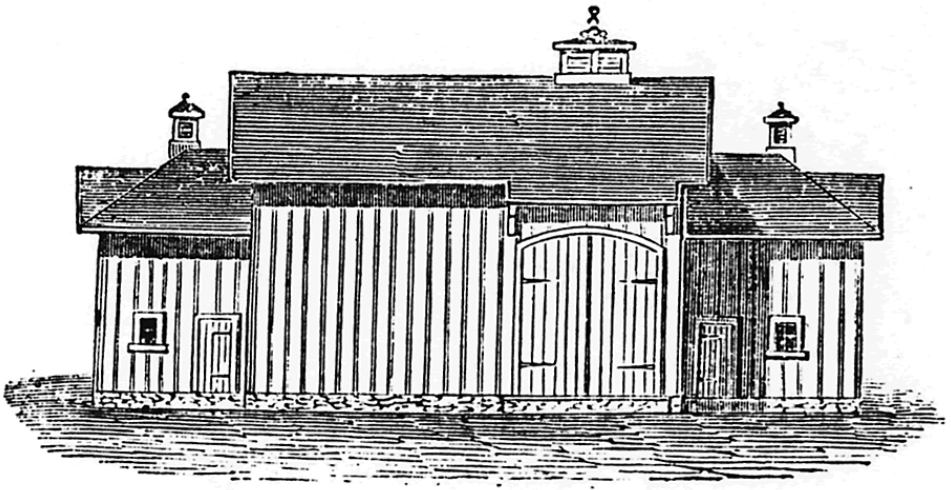




Transverse section, showing open timber roof, walls and buttresses.

# Design Thirteen.

## A FARM BARN.

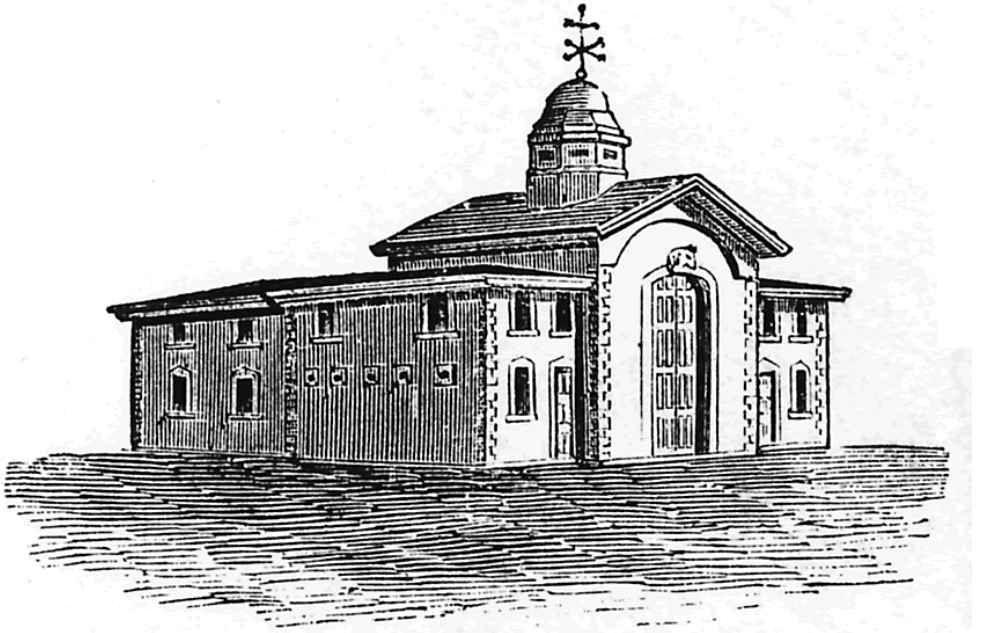


There are few objects in the country districts that command our sympathies and excite our interest more than the farm buildings erected for grain and stock. Without pretending to style or architectural beauty they form harmonious and interesting features in our rural landscape, and appeal strongly to our national taste for breadth, abundance, and thrift.

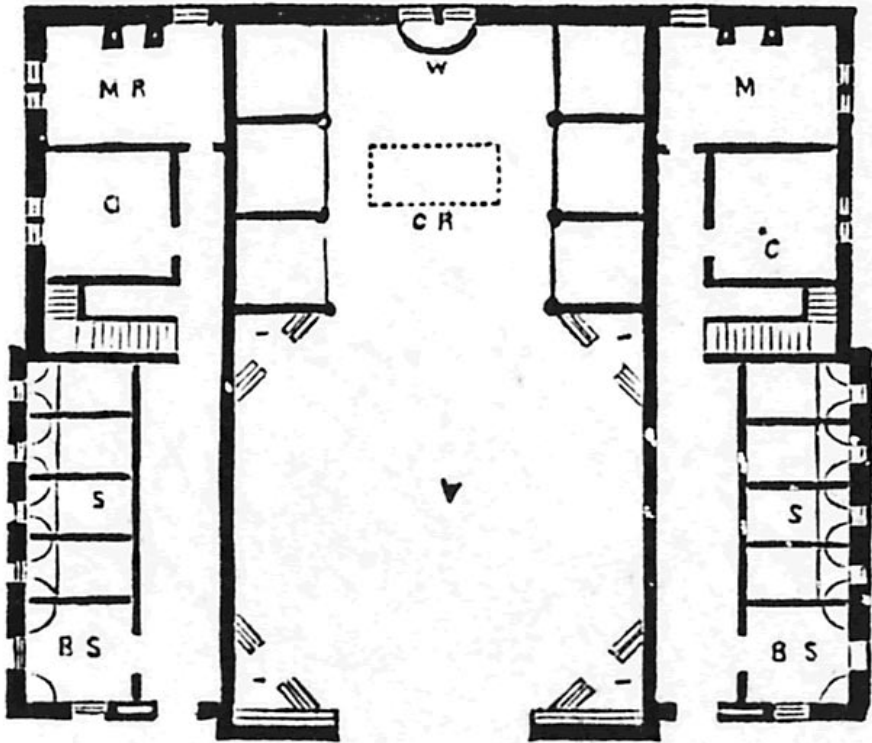
The accompanying plan is not offered as a model, though a very good one for a grain and stock farm, and designed for one of the grain growing sections of New York State. A glance at the plan will show in the main building the old-fashioned bay and threshing floor borrowed from our German and English neighbors and retained by us as an essential feature of the Yankee system of barn building. The main building of our plan is 34 x 44 feet fronting north-east, with wing-extensions on each side 18 x 66 feet, running southwest, in which provision is made for stock, feed, and grain. One side on the southwest forms an L 40 feet long. These extensions are 16 feet high, and posts of main building 24 feet high, giving abundant loft room.



Design Fourteen.  
COUNTRY GENTLEMAN'S STABLE.



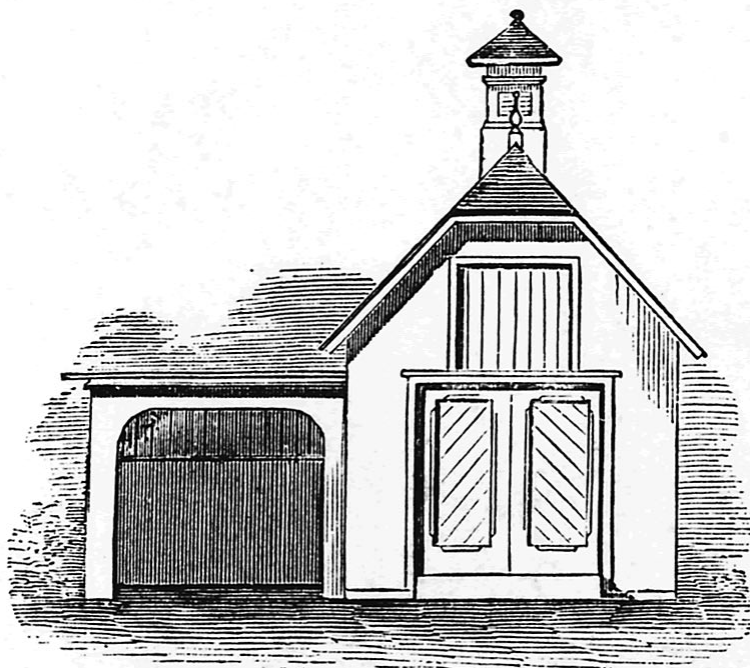
This is a large double stable, designed for D. D. Chamberlain, Croton Falls, N. Y., and intended to embrace every modern improvement in stable-fitting worth having combined with the most perfect facilities for ventilating, the care of horses, and the housing of vehicles. Size of building, 74 x 84 feet. First story 15 feet, second story 10 feet. Walls buildt of hard brick, and hollow.



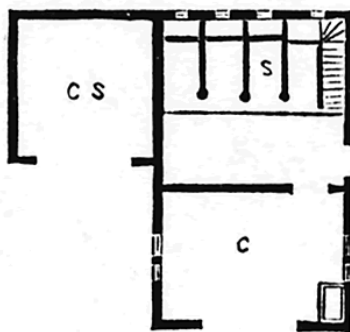
Plan. V, vestibule, 40 x 40 feet; lighted from the dome above the roof. 1,1,1,1, harness closets, with glass sliding doors; C, R, coach room, 30 x 40 feet, with stalls for vehicles, and space for washing the same; W, water in coach room; S, stalls, 6 x 10 feet; right hand range for owner, left hand range for guests; B, S, box stalls, 10 x 10 feet; G, grainery, 13 x 13 feet; M, R, man's or groom's room, 13 x 18 feet, made fire proof. Under the loft stairs is placed a water-closet, urinal, wash-basin, and an additional water tank. Root and manure cellars are beneath the first floor.

# Design Fifteen.

## SMALL SUBURBAN STABLE.



This is the elevation of a small wooden stable, 18 x 28 feet, and open shed, 12 x 15 feet. One and a half stories high, with ventilator. Designed and built for D. D. Chamberlain, Croton Falls, N. Y., also for C. E. Parker, Rutherford Park, N. J.

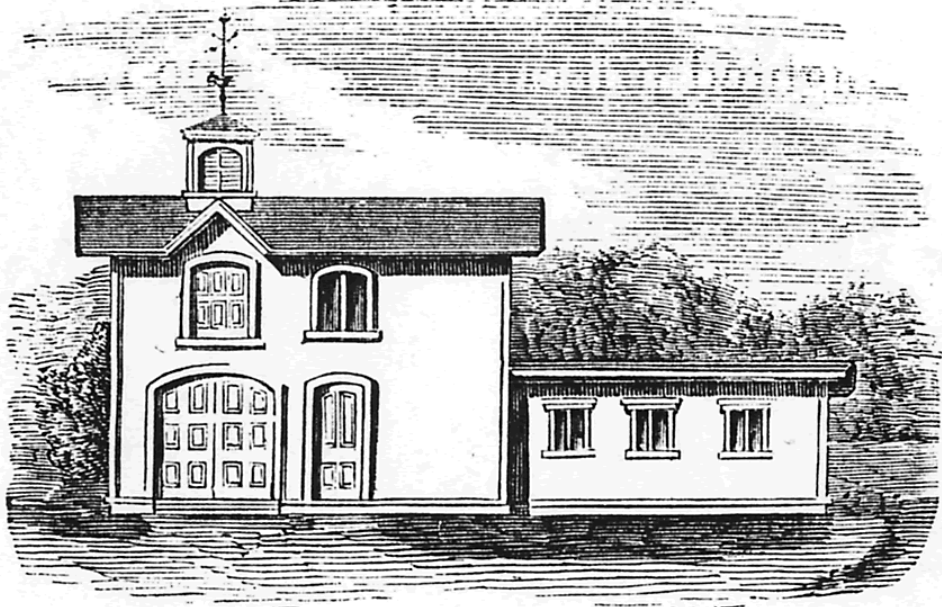


The plan. C, carriage room, 16 x 14 feet; S, stalls, 4.5 x 9 feet; C, S, cow shed, 12 x 15 feet. Feed bin is placed under the stairs, and the harness closet in carriage room.



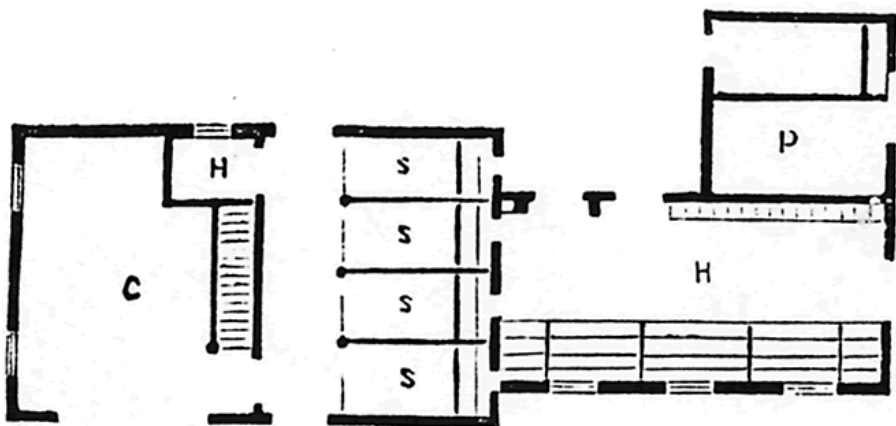
# Design Sixteen.

## SMALL SUBURBAN STABLE.

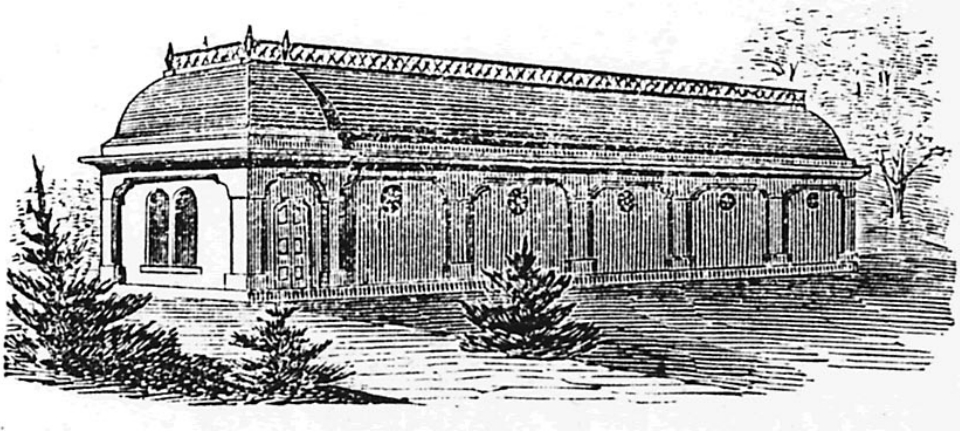


This is an elevation of a small suburban stable, 20 x 30 feet, one and a half stories. Hen-house, 12 x 20 feet. Peg-pen, 10 x 10 feet.

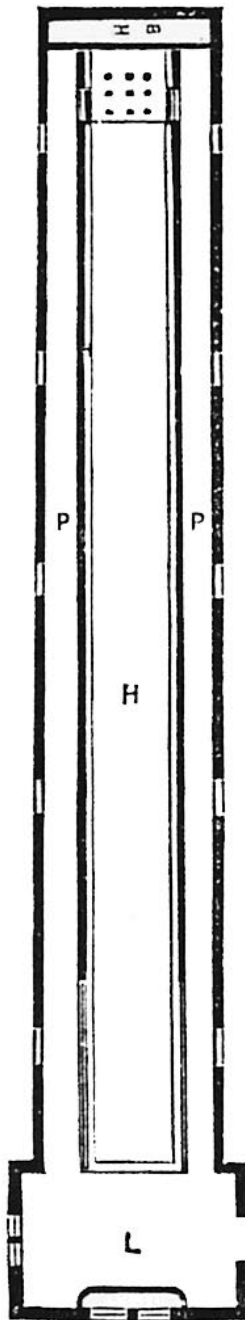
The plan. C, carriage room, 18 x 15 feet; S, stalls, 5 x 9 feet; H, harness closet; H, hen-house; P, piggery. Feed bin in the loft, with shoots to lower the grain.



Design Seventeen.  
BOWLING ALLEY.

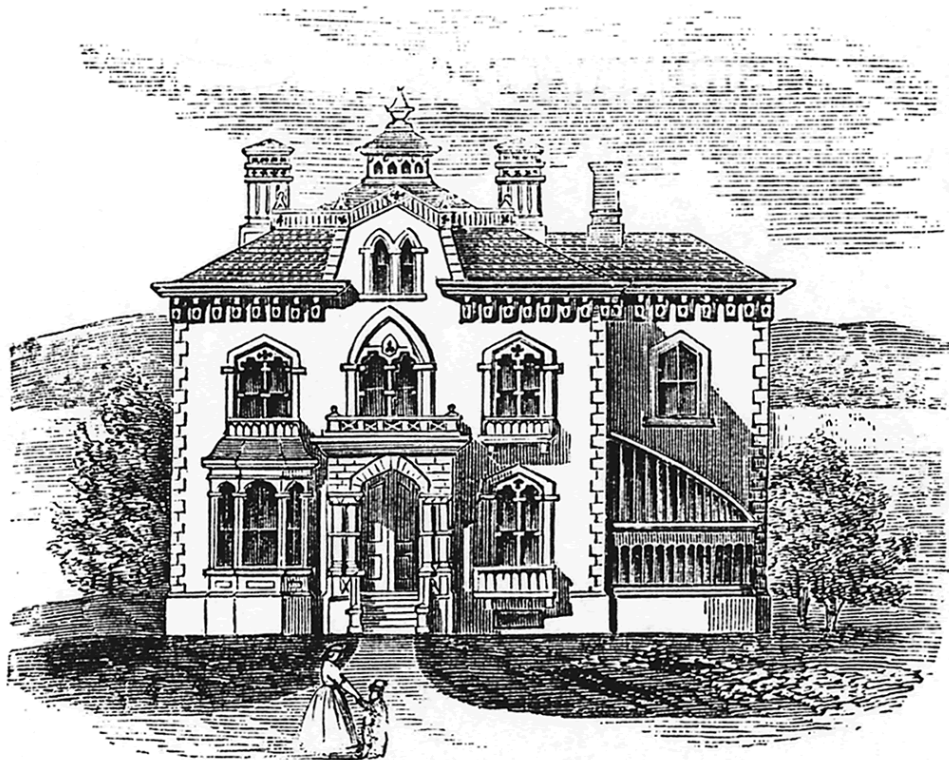


This is a perspective view of a Bowling Alley, 13 x 97 feet, designed for D. D. Chamberlain, Croton Falls N. Y. Lighted principally from the roof.



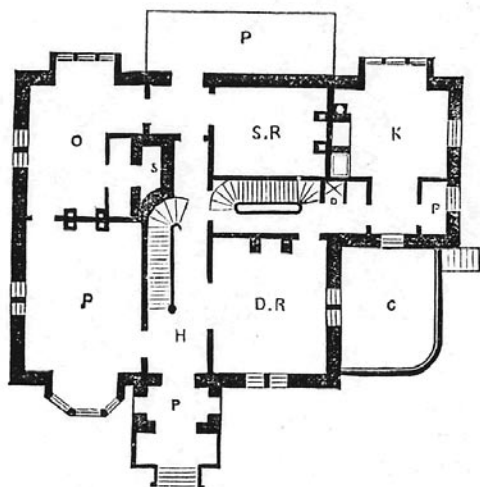
Bowling Alley plan. L, lobby entrance, 10 x 15 feet; H, bowling track, 86 feet long and 4 feet wide, between the racks a ball holder; P, P, passages, 3 feet wide on each side of track; B, H, bulk head and bowling pit.

Design Eighteen.  
RESIDENCE OF C. E. ROBINS.

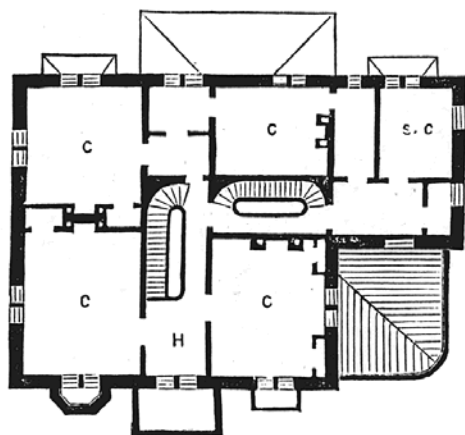


Stone Dwelling House, at Staten Island, N. Y., for Chas. E. Robins, Esq., in accordance with Plans, Elevations and Details, furnished by D. T. ATWOOD, Architect, 335 Broadway N. Y., 1871.

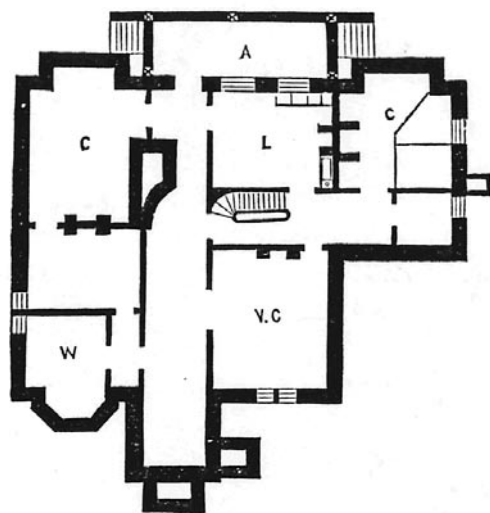
The dimensions of main building are as follows: Width across the front 44 feet. Depth, front to rear, 42 feet. Wing building 16 x 23 feet.



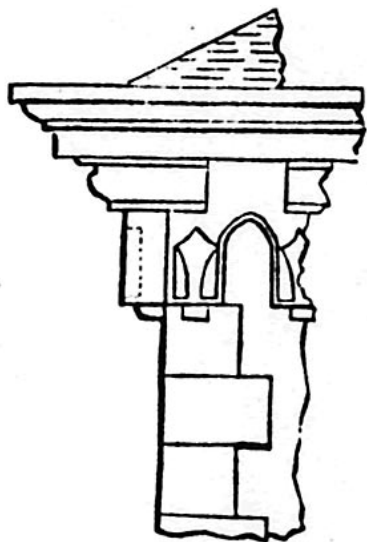
Plan of First Floor. P, porch; H, hall; P, parlor, 15 x 20 feet; D, R, dining room, 15x 18 feet; O, office, or library, 15 x 17 feet; S, safe, or vault for office; S, R, sitting room, 12 x 15 feet; K, kitchen, 15 x 15 feet; P, pantry, 3 x 6 feet; D, waiter and china closet.



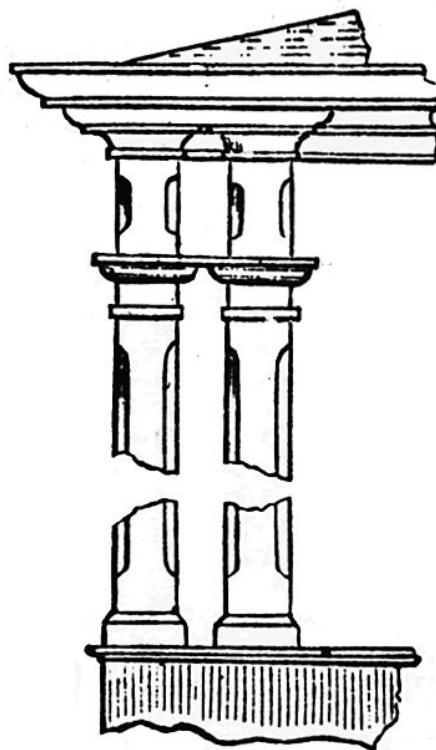
Plan of second Floor. C,C, C, C, chambers, 12 x 15, 15 x 19, and 15 x 16 feet; S, C, servant's chamber. 10 x 12 feet; H, hall.



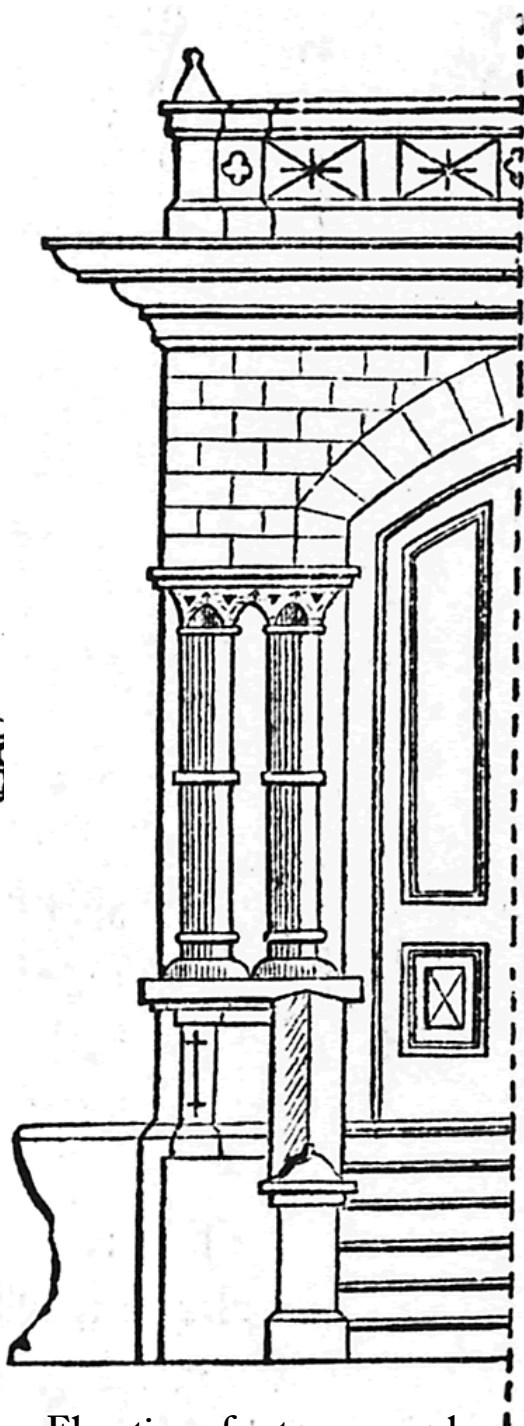
Basement Plan. W, wine cellar, 10 x 12 feet; V, C, vegetable cellar, 15 x 18 feet; L, laundry, 12 x 15 feet; C, C, cellars, 15 x 17 and 15 x 20 feet.



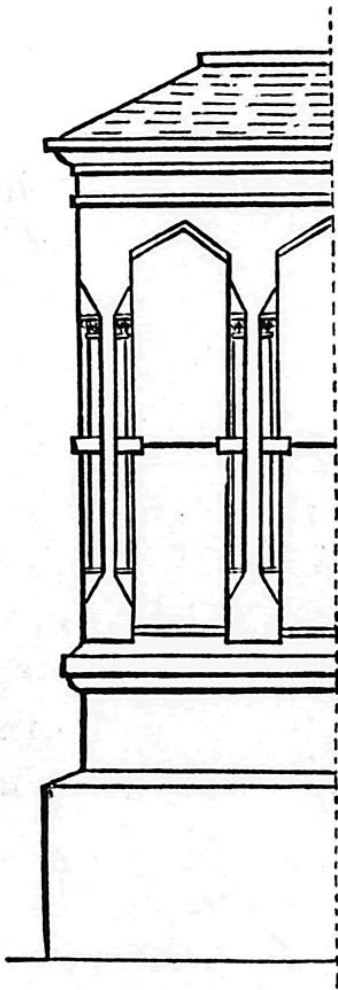
Eave section of Cornice.



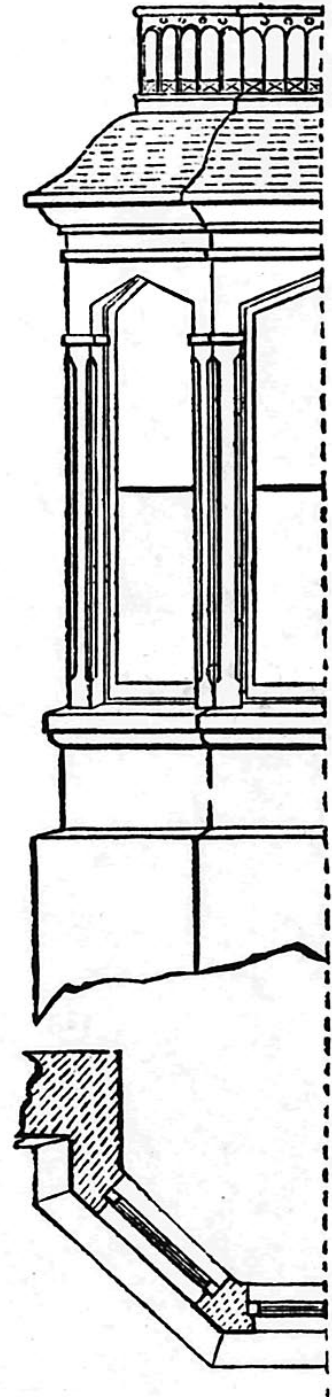
Sections of Rear Piazza.



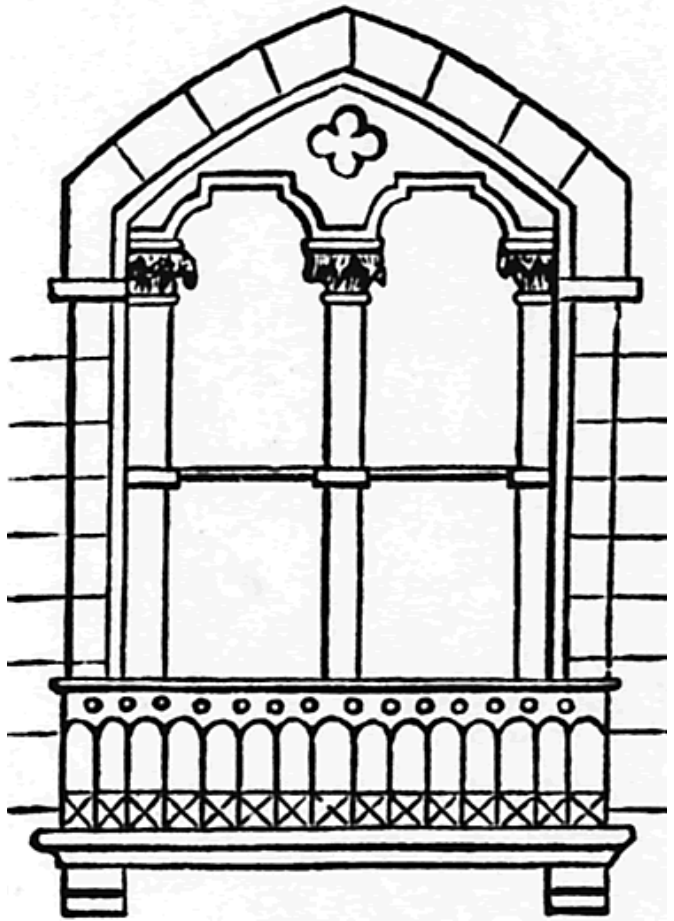
Elevation of entrance porch.



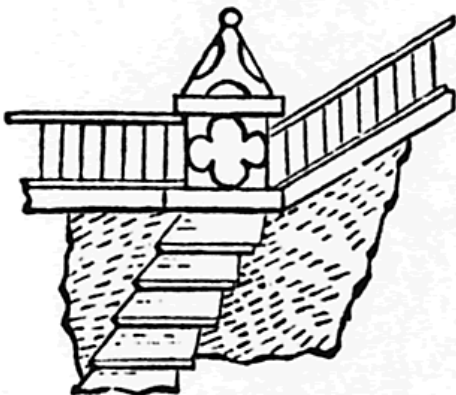
Elevation of Square Bay.



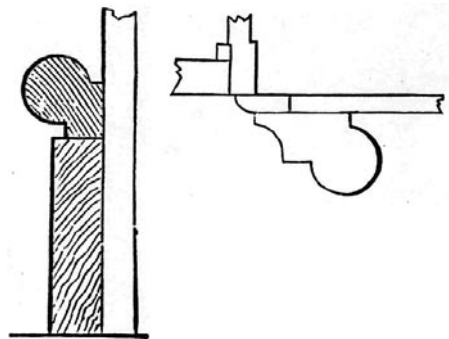
Elevation of Octagonal Bay.



Half elevation of Chimney-top, above left. Elevation of Balcony Window, above right.

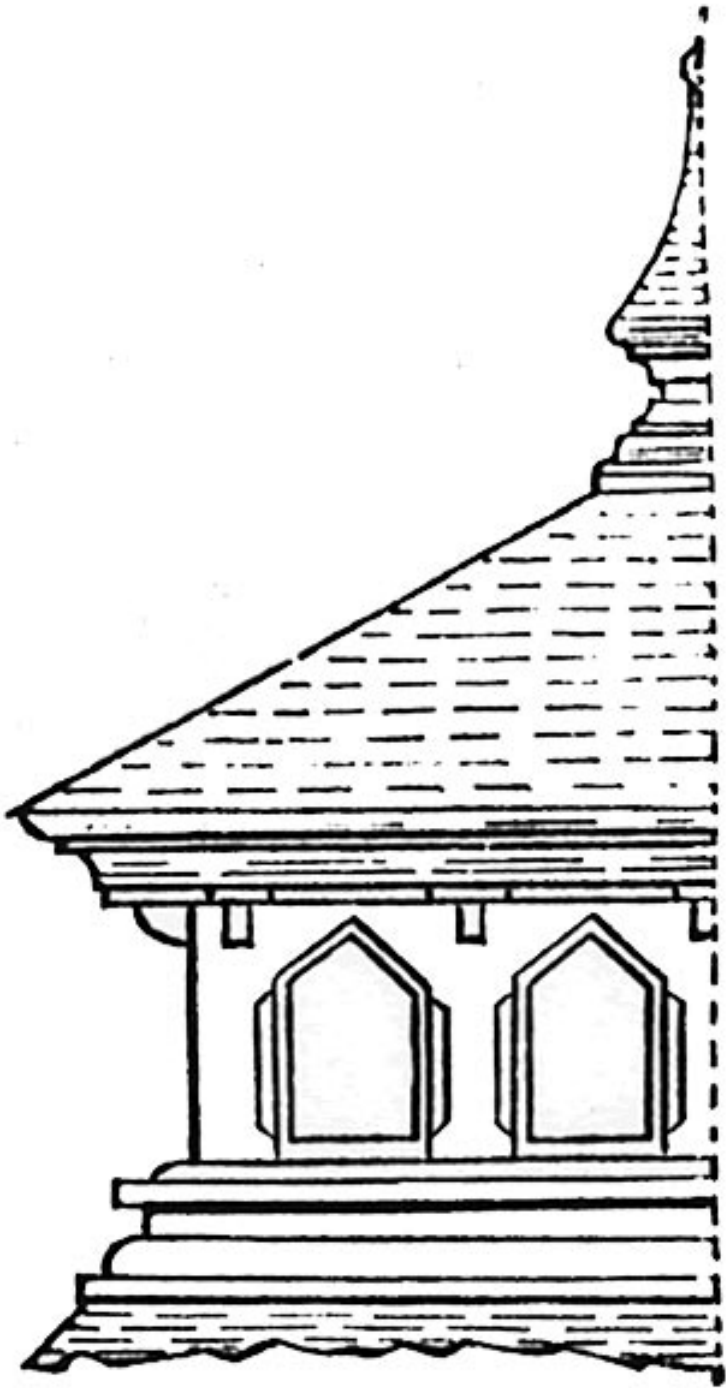


Section of Roof Balustrade.



Section of Base, left. Section of Architrave, right

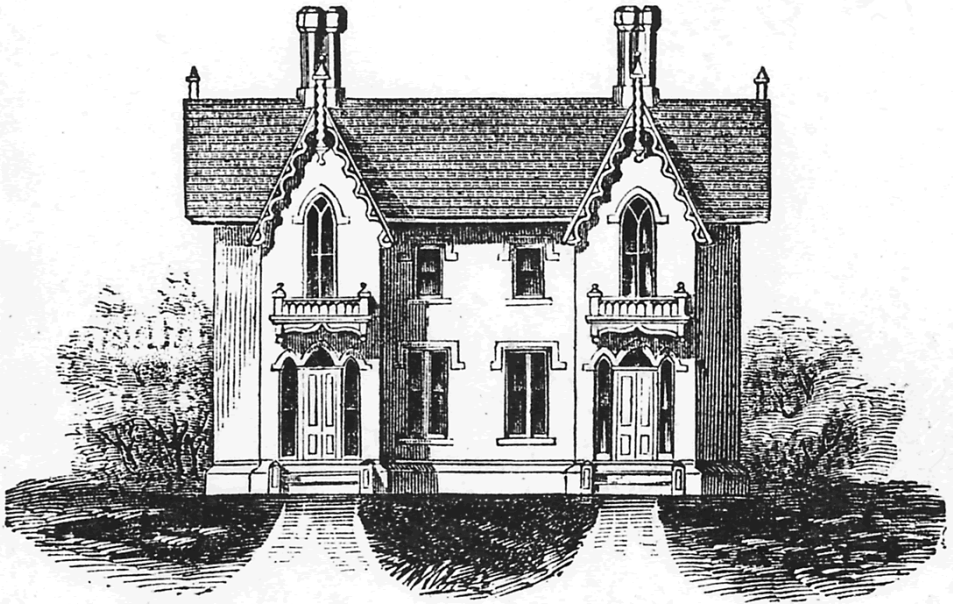




Half Elevation of Observatory.

## Design Nineteen.

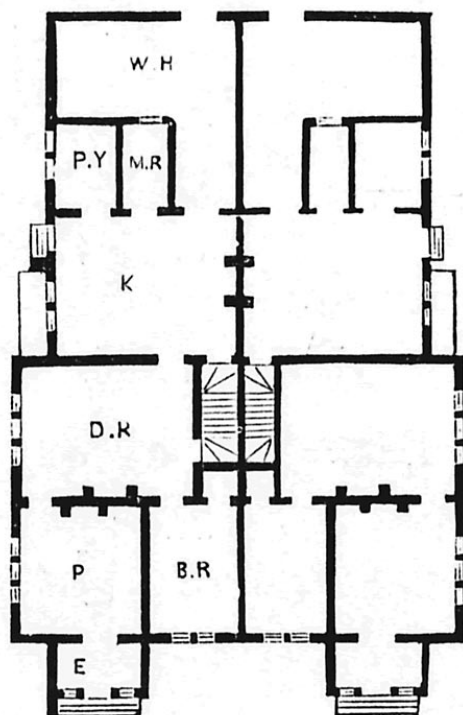
### A DOUBLE COTTAGE, IN THE RURAL GOTHIC STYLE.



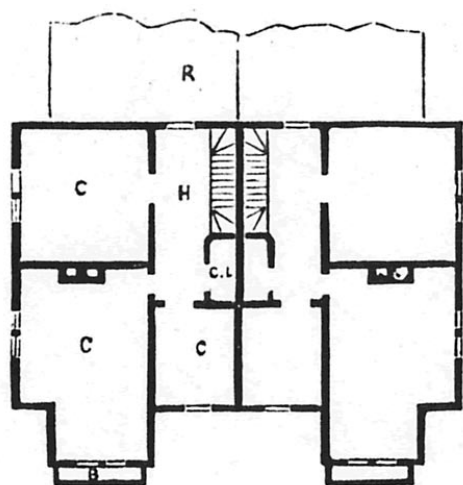
The demand of late for double dwellings has been so frequent, that we feel we shall be doing somebody a service by the introduction of the following design:

Elevation of entrance front, 42.5 feet wide, and two stories and an attice in height. Height of first story, 10 feet; second story, 9 feet; whole depth from front to rear, 59 feet; extension, one story high. The walls of this dwelling are filled in with pale brick, lathed and plastered inside, and weather-boarded outside. The gables are trimmed with ornamental verge boards cut out of 2 inch plank. The finials are octagonal, 7 inches in diameter. Ornamental balconies, 30 inches wide, project over the entrances; side stoops and hoods are provided for the side doors. Piazzas were purposely left off to lessen the cost, but can be added on each end of the main building. The entire finish is of meduim

quality and thoroughly substantial. Hard wood mantels are provided for the first story, flue rings and shelves for the second story. The chimneys are topped out above the roof with Garnkirk octagonal shafts.

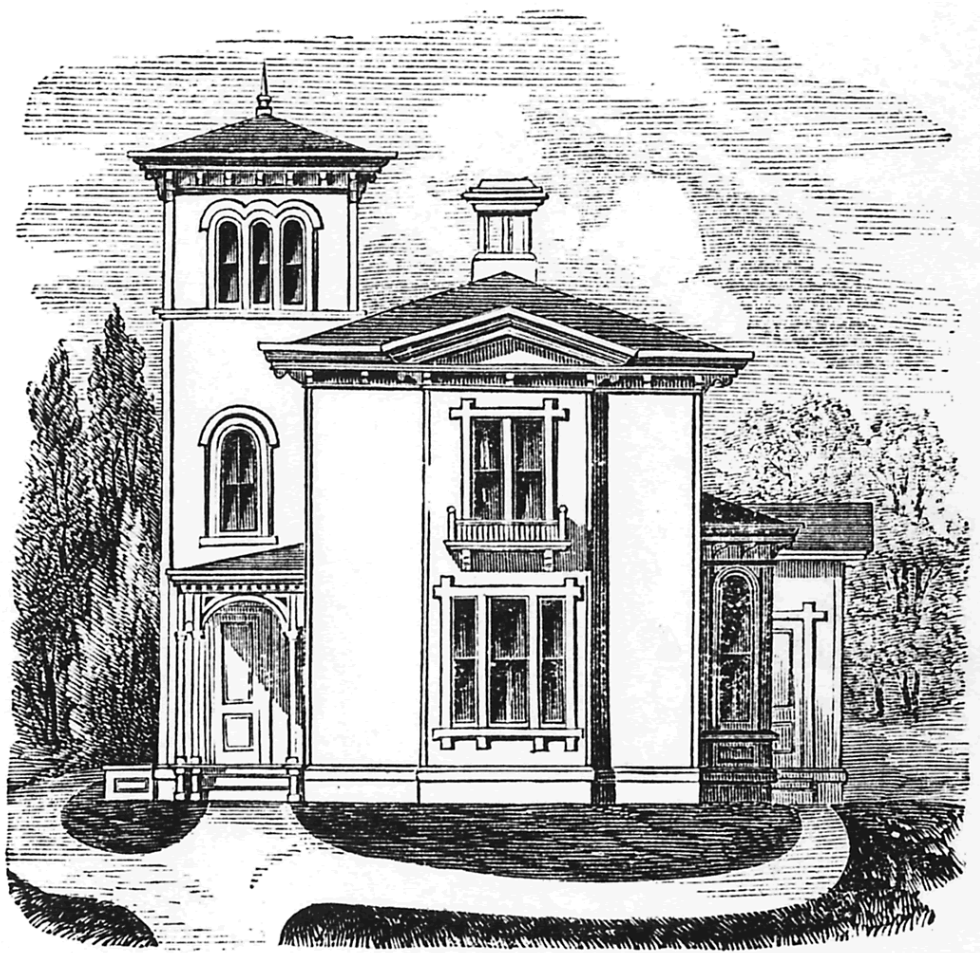


First floor. Size of the main building. 25.5 x 42.5 feet; rear building, 33.5 x 33.5 feet. F, lobby, paved with tile, 6 x 7 feet; P, parlor, 12 x 12 feet; B, R, bed-room, 8 x 12 feet; D, R, dining-room, 12 x 16 feet; K, kitchen, 14 x 16 feet; P, Y, pantry, 6 x 8 feet; M, R, milk or store-room, 4 x 8 feet; W, H, wood-house, 12 x 16 feet. The stairs are "box," with cellar flights underneath.

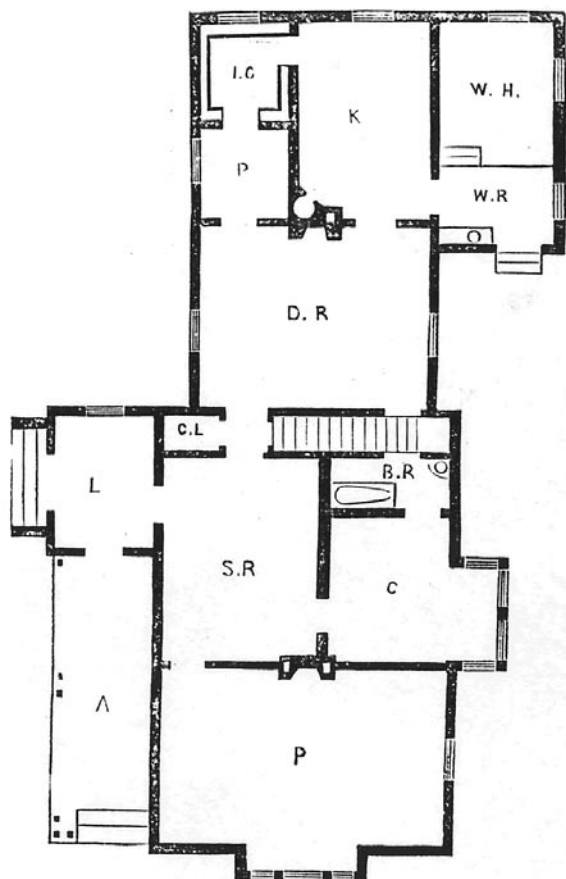


Second floor. C, C, C, chambers, 12 x 12, 12 x 18, and 8 x 10 feet. The front chamber opens in the front upon the balcony.

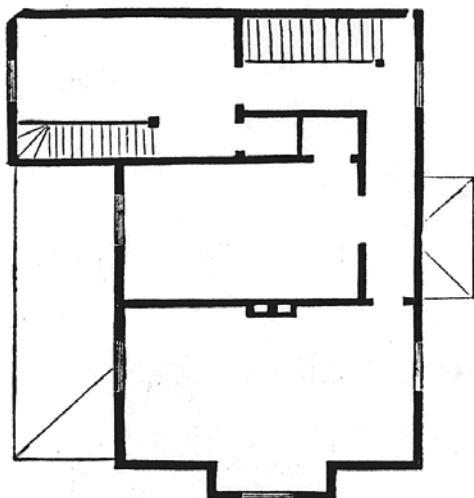
Design Twenty.  
ITALIAN COTTAGE.



Italian cottage, front elevation.



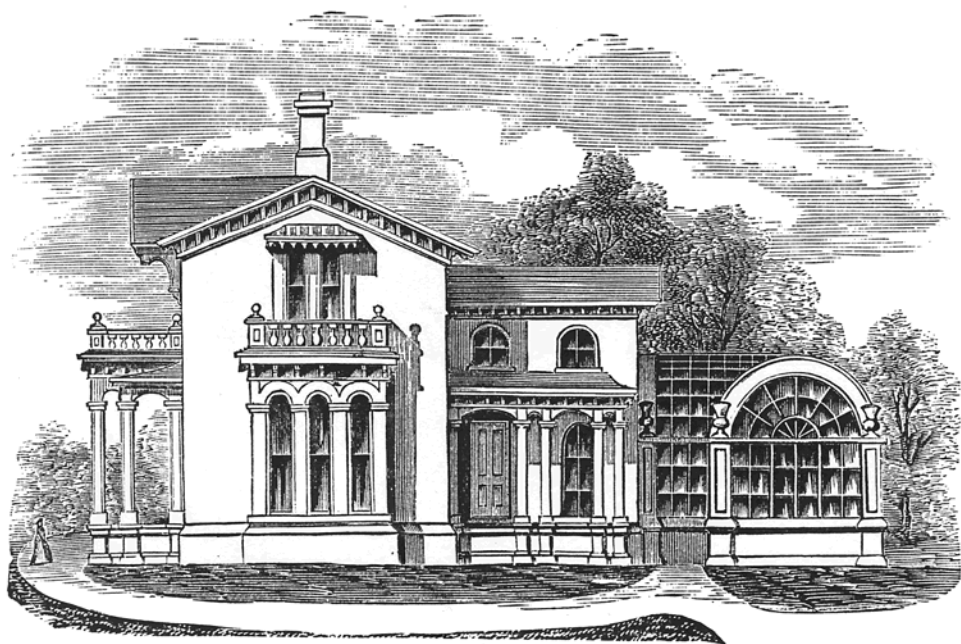
First floor plan. P, parlor, 14 x 20 feet; S, R, sitting and reception room, 10 x 14 feet; C, bed-chamber, 10 x 10 feet; B, R, bath room, 6 x 10 feet; D, R, dining room, 12 x 15 feet; P, pantry, 6 x 6 feet; I, C, ice closet, 6 x 6 feet; K, kitchen, 9 x 13 feet; W, H and W, R, wood house and wash room, 8 x 15 feet; L, lobby, 7 x 9 feet; A, arcade, 7 x 19 feet.



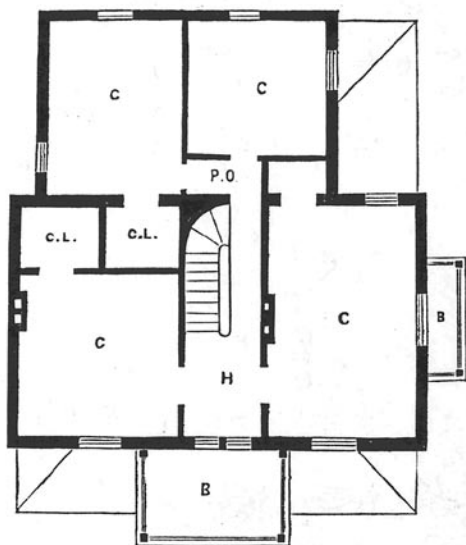
Second floor; containing three bed rooms, 10 x 20, 10 x 16 and 9 x 14 feet respectively. Closets per plan; and a room in the upper story of the tower 9 x 9 feet.

# Design Twenty-One.

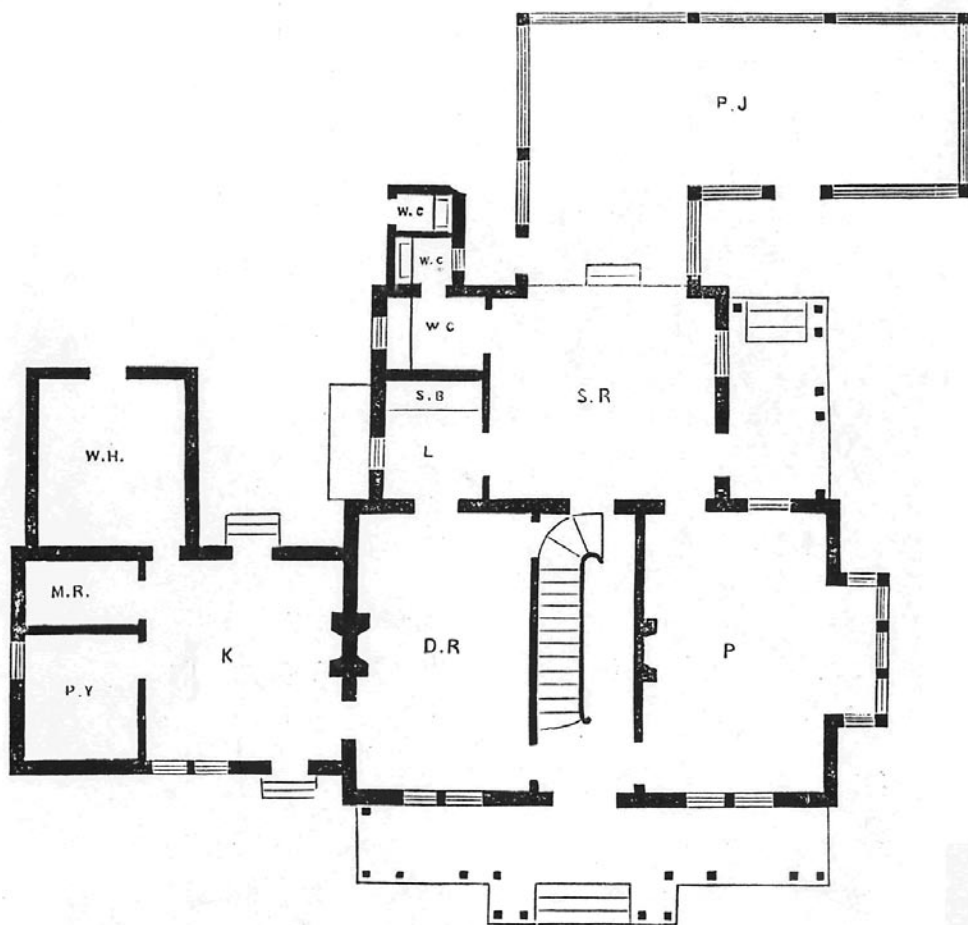
## ITALIAN VILLA.



Italian villa, front elevation.

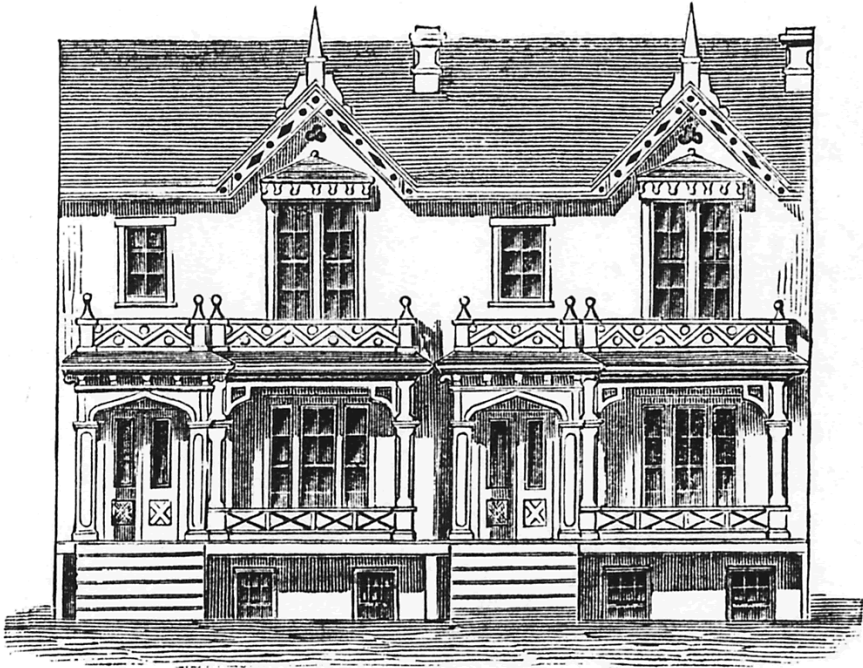


Second floor. C, C, C, C, bed chambers, 12 x 18, 12 x 13, 11 x 14, and 11 x 11 feet; H, hall, 7 x 18 feet, with stairs continuous to servants attic; C, L, closets, 5 x 6 feet; B, B, balconies, 7 x 12 and 3 x 9 feet. There is a cellar under the whole building 7 feet high.

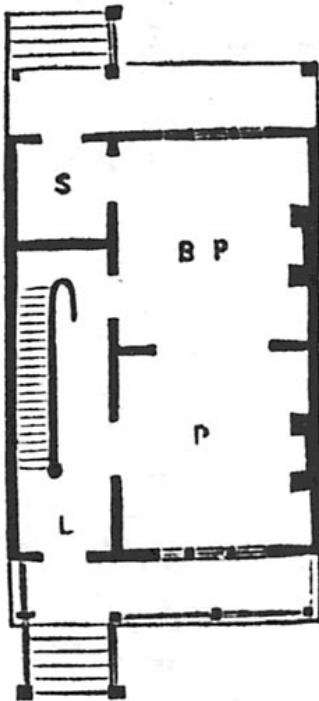


First floor. P, parlor, 15 x 18 feet; D, R, dining room, 12 x 18 feet. The hall separating these rooms is 7 x 18 feet; stairs 3 feet wide. S R, sitting room, 14 x 14 feet; L, larder or pantry, 6 x 8 feet, with a side-board (S, B) ; W, C, wash or toilet closets, 5 x 6 feet; W, C, W, C, outside and inside water closets, 3.5 x 4 feet wide; P, Y, pantry, 8 x 8 feet; M, R, milk room, 4 x 8 feet; W, H, wood house, 10 x 12 feet; P, J, conservatory, 12 x 36 feet; opening into sitting room by glass doors.

# Design Twenty-Two. MELROSE COTTAGES.

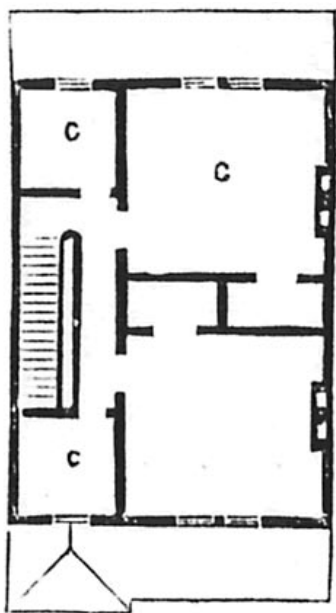


Front elevation, Melrose cottages, for P. Mc Hugh, Esq.

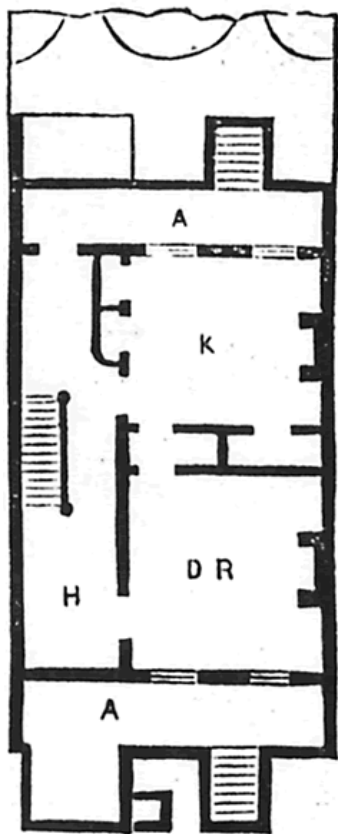


First floor plan. P, parlor, 14 x 13.5 feet; B, P, back parlor, 14 x 13.5 feet; S, study, 6 x 8 feet; H, lobby or hall, 6 x 21 feet. Piazzas front and rear, 6 feet wide.



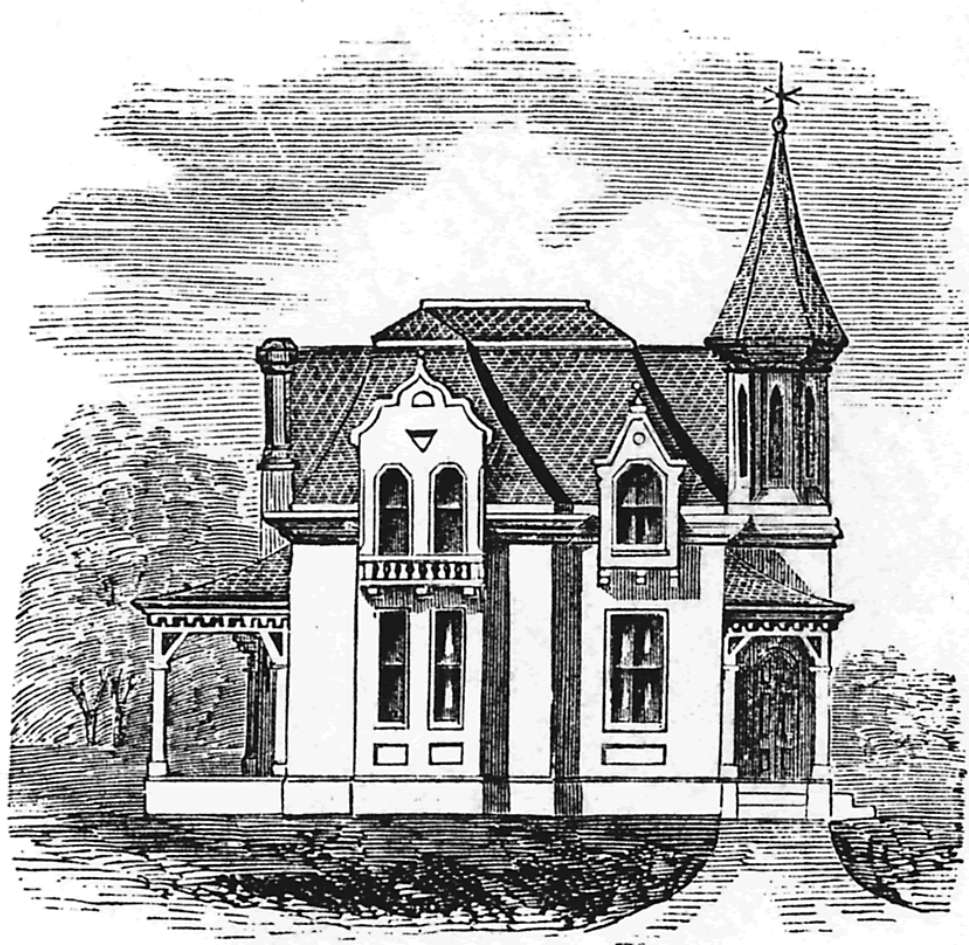


Second floor. C, C, C, C, bed rooms, 13 x 13 and 7 x 8 feet.



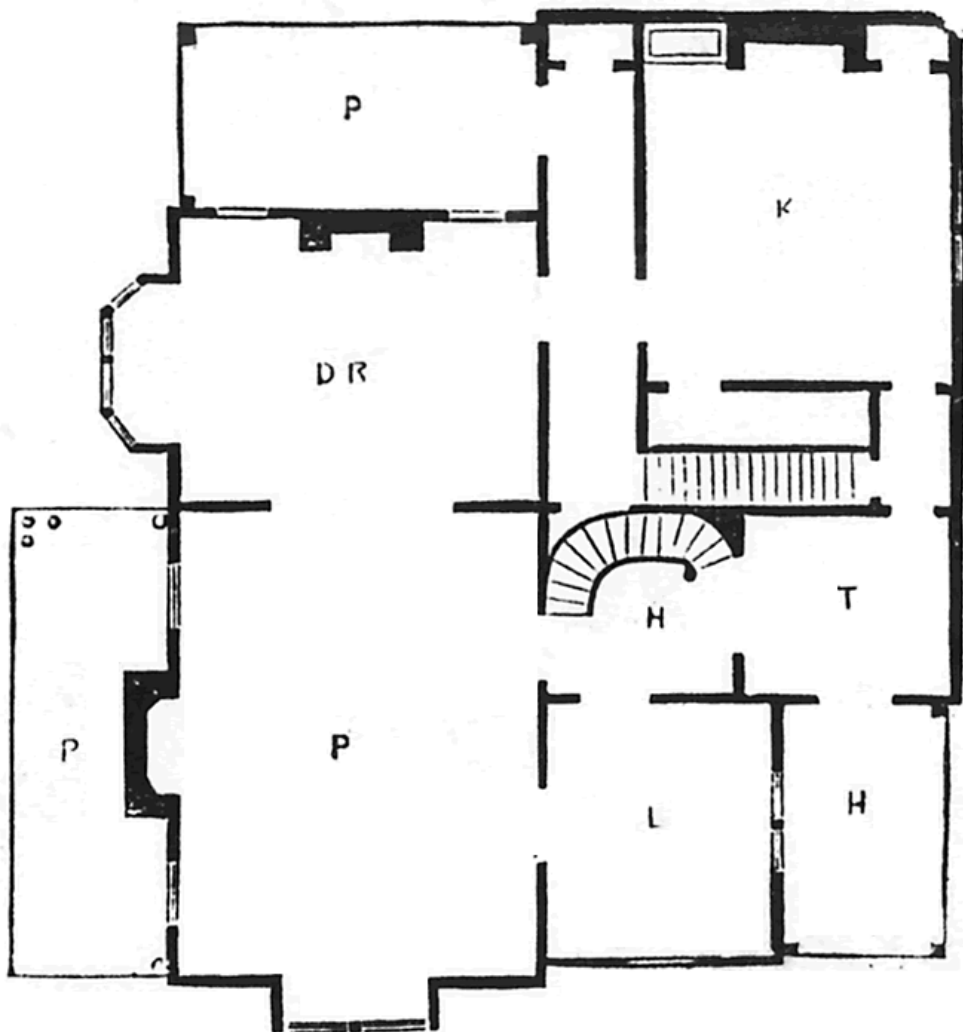
Basement. H, hall, 6 feet wide; D, R, dining room, 13 x 13 feet; K, kitchen, 13 x 13 feet, with three closets; A, A, front and rear areas.

Design Twenty-Three.  
A PICTURESQUE VILLA.



A picturesque villa designed for Mr. Tooker, of Orange, N. J., ,  
front elevation.

First story, 11 feet high; second story, 11 feet high; attic, 9 feet  
high, in the middle. designed for stone, with slate roofs.



First floor. T, tower, 8 x 8 feet; H, hall, separated by an arch, 8 x 8 feet, with a back corridor communicating therewith, 4 feet wide; P, parlor, 15 x 20 feet; D, R, dining room, 12 x 15 feet; L, library, 10 x 11 feet; K, kitchen, 14 x 15 feet with pantries; P, P, side and rear piazzas, 8 x 10 feet.

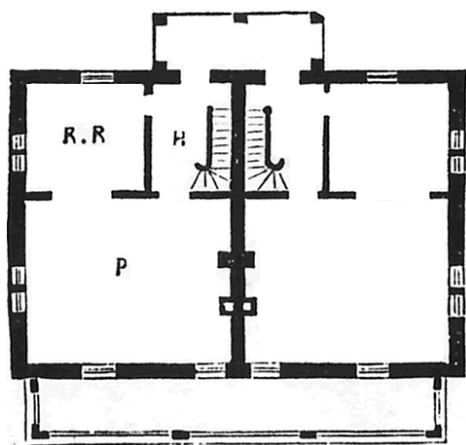
Second floor contains 5 rooms and 4 closets. Attic 2 servants' rooms.

## Design Twenty-Four.

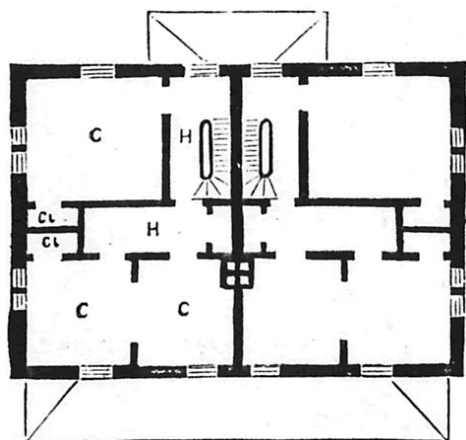
A DOUBLE SUMMER RESIDENCE, OF BRICK,  
ON THE BAY SHORE, S. I.



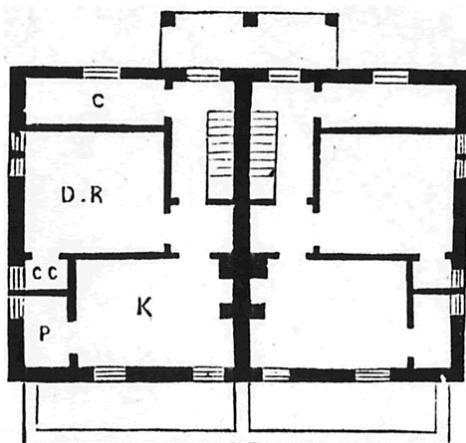
Elevation of the water front of Bay Shore, S. I. double summer residence designed for Mr. Coville.



First floor. h, hall, 8 x 12 feet;  
R, R, reception room, 12 x 12  
feet; P, parlor, 16 x 20 feet.



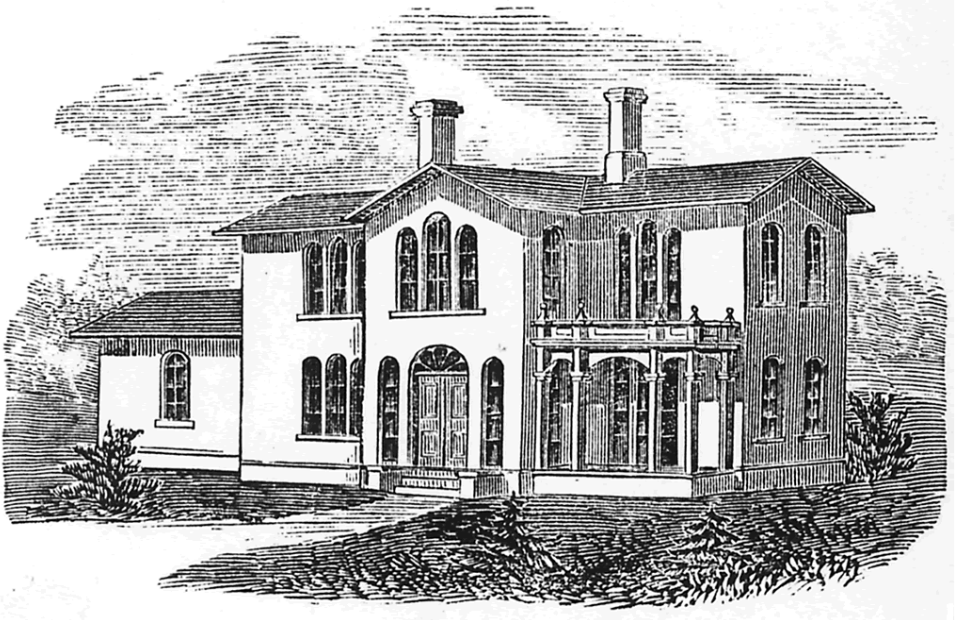
Second floor. H, upper hall, 8  
x 12 feet; C, C, C, bed rooms,  
12 x 12 and 10 x 10 feet; C, L,  
closets.



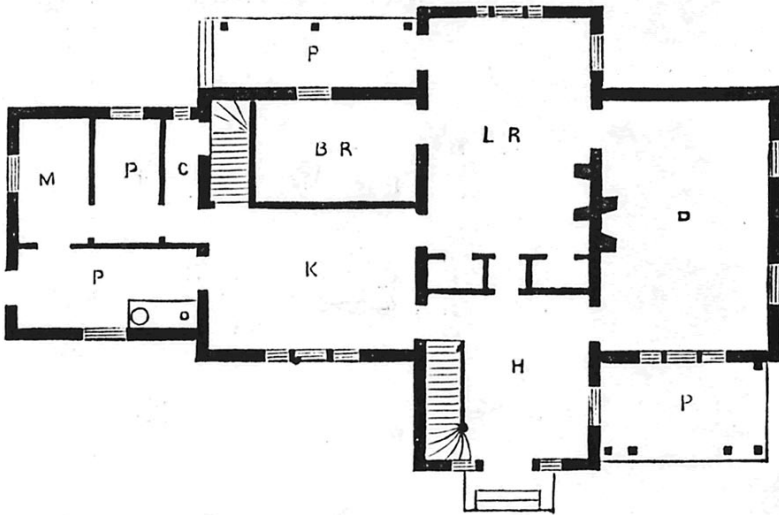
Basement. C, cellar, 3 x 13 feet;  
D, R, dining room, 12 x 14 feet;  
K, kitchen, 12 x 16 feet; P, pan-  
try, and C, C, china closet.

# Design Twenty-Five.

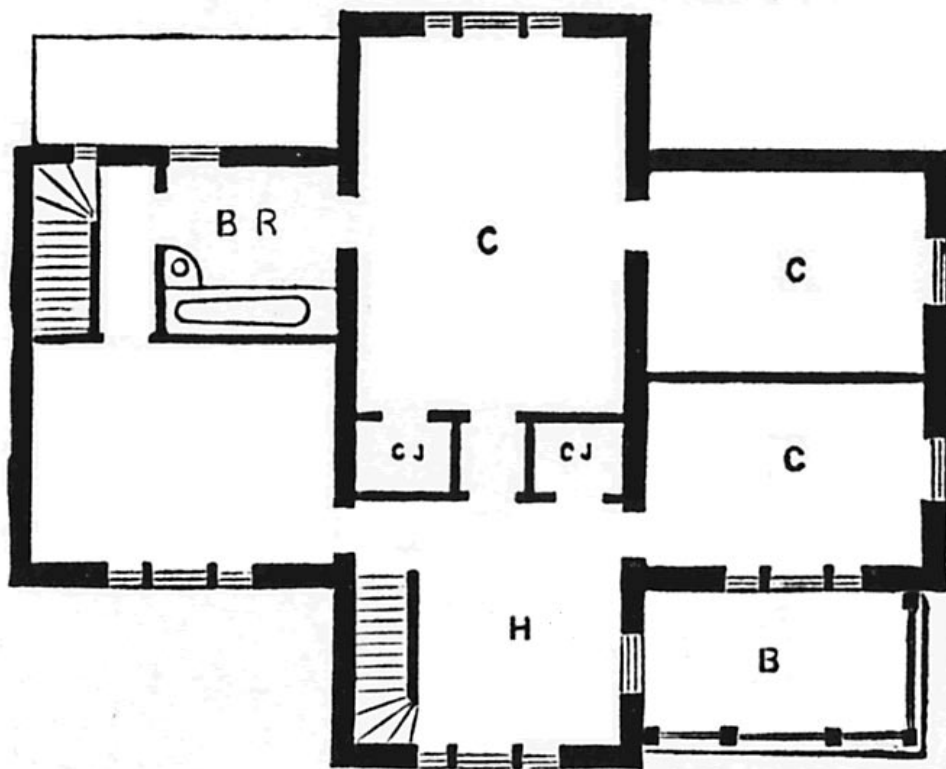
## A COUNTRY HOUSE.



A country house, perspective view.



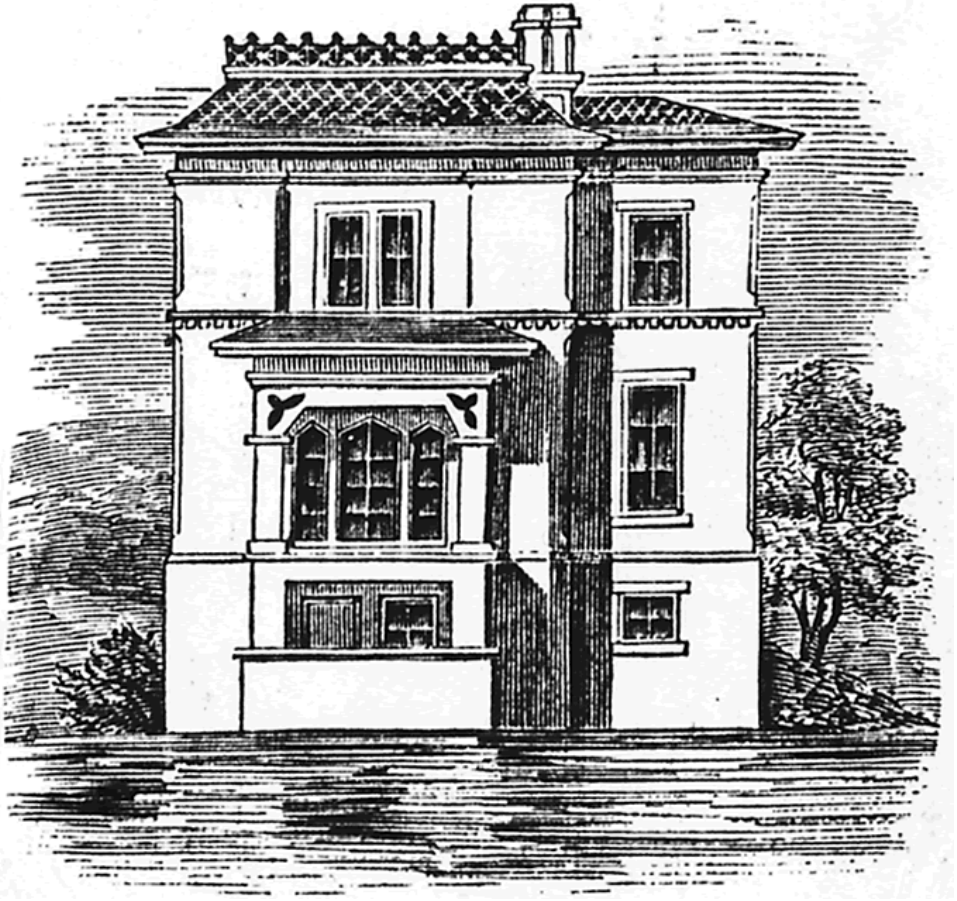
H, hall, 13 x 13 feet; P, parlor, 14 x 20 feet; L, R, living room, 13 x 18 feet; K, kitchen, 12 x 16 feet; B, R, bed room, 8 x 11 feet; P, passage; C, passage to cellar; P, pantry, 5 x 10 feet; M, milk room, 7 x 10 feet; P, P, piazzas front and rear.



Second floor. H, hall, 13 x 13 feet; C, C, C, C, bed rooms, 10 x 14, 13 x 18, and 11 x 16 feet; B, R, bath room, 8 x 9 feet; C, L, closets; B, balcony. Designed to be built of brick.

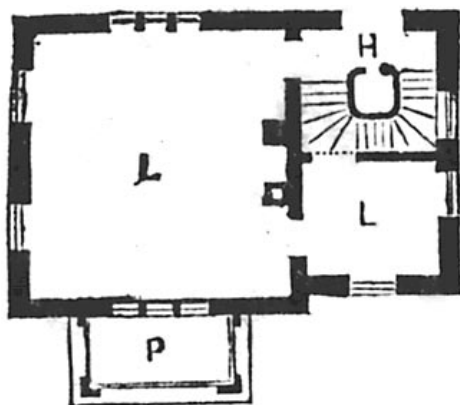
## Design Twenty-Six.

A SINGLE SUMMER RESIDENCE OF BRICK,  
BAY SHORE, S. I.

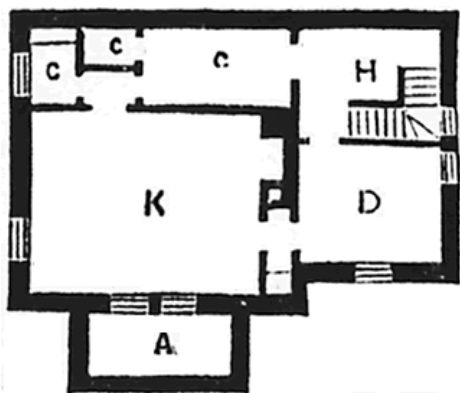


Elevation of the water front of Bay Shore, S. I. single summer residence designed for Mr. Coville.

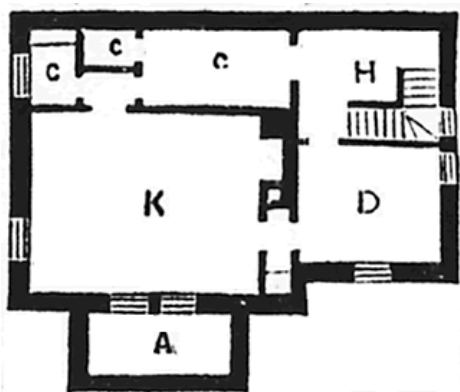




First floor. H, hall, 7.5 x 10 feet; L, living room, 18 x 18 feet; L, library, 10 x 10 feet.

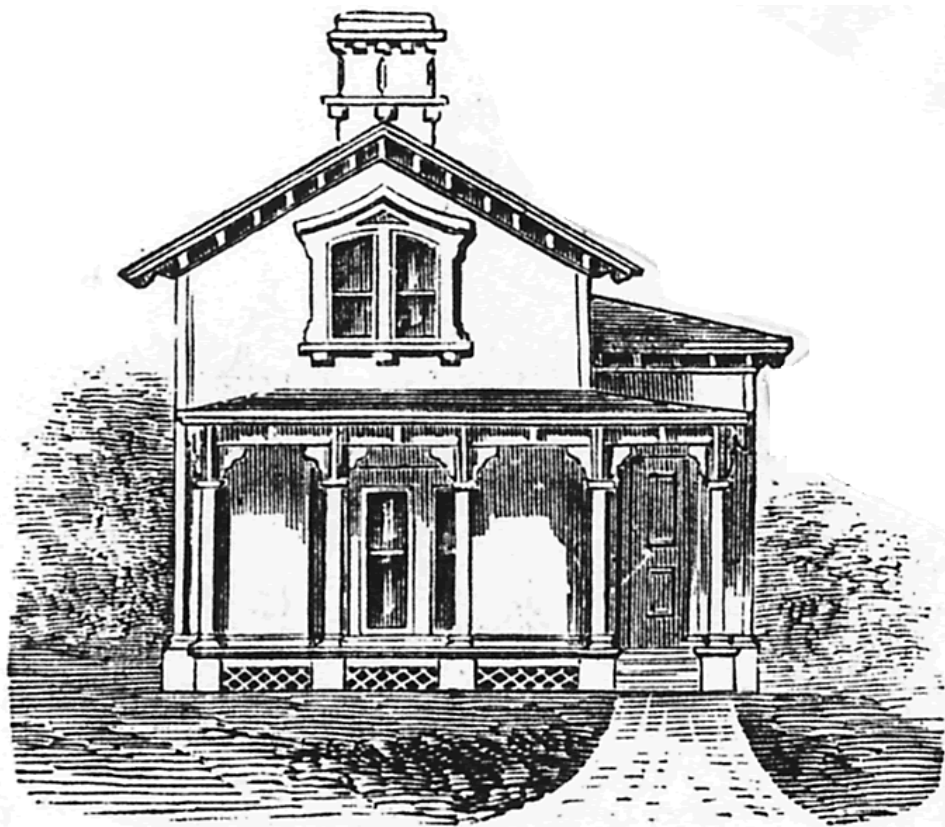


Second floor. H, hall, 7.5 x 10 feet; side hall 4 feet wide; C, C, C, bed rooms, 9 x 13 and 10 x 10 feet.

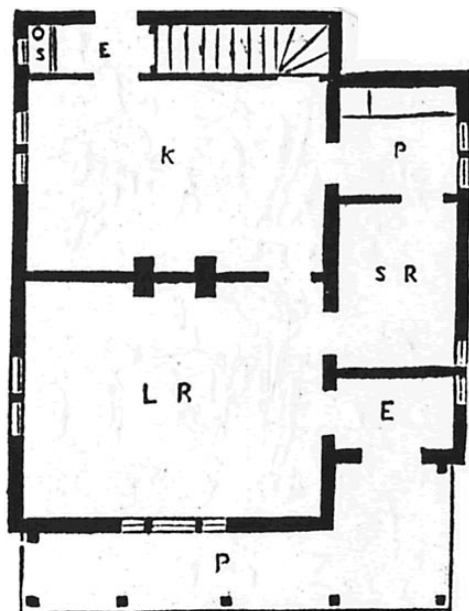


Basement. H, hall, 7.5 x 10 feet; D, dining or breakfast room; K, kitchen, 12 x 16 feet; C, cellar, 6 x 9 feet; C, C, closets for stores and wine.

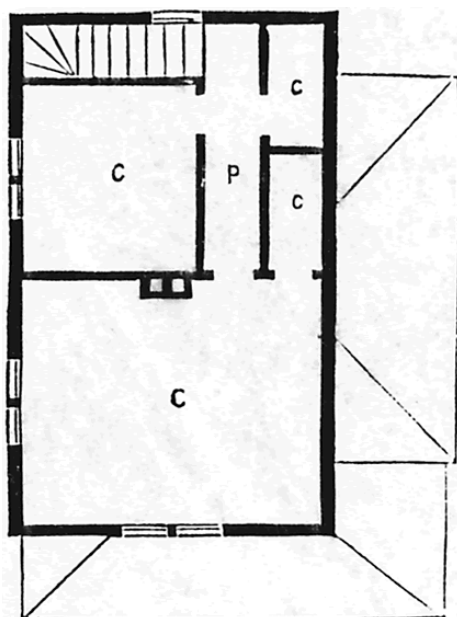
Design Twenty-Seven.  
A MECHANIC'S COTTAGE.



Mechanic's cottage, front elevation.

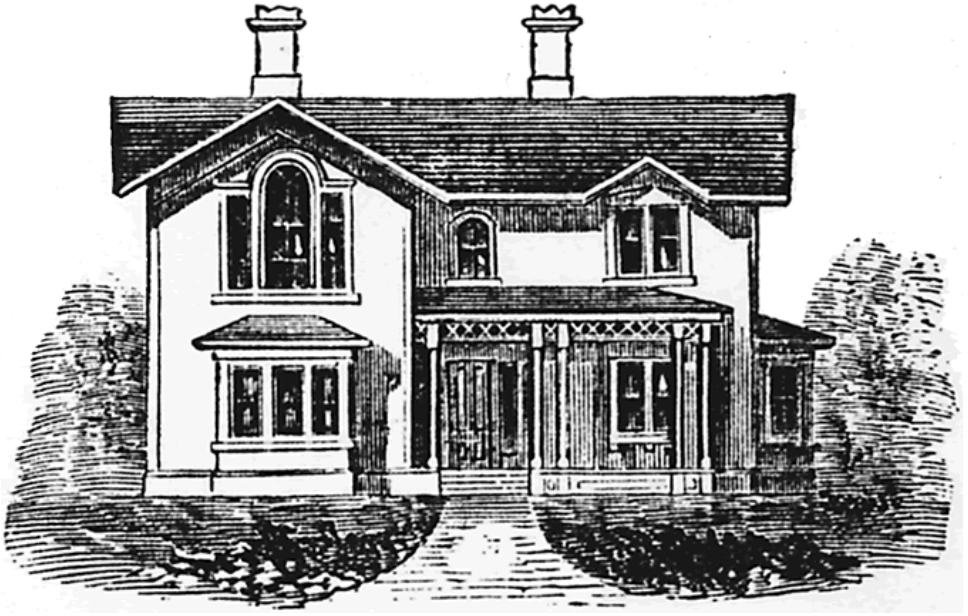


First floor. E, entry, 4 x 7 feet; L, R, living room, 11 x 13 feet; K, kitchen, 11 x 13 feet; E, back entry; S, sink and pump; S, R, store room, 5 x 7 feet; P, pantry, 5 x 5 feet; P, piazza.

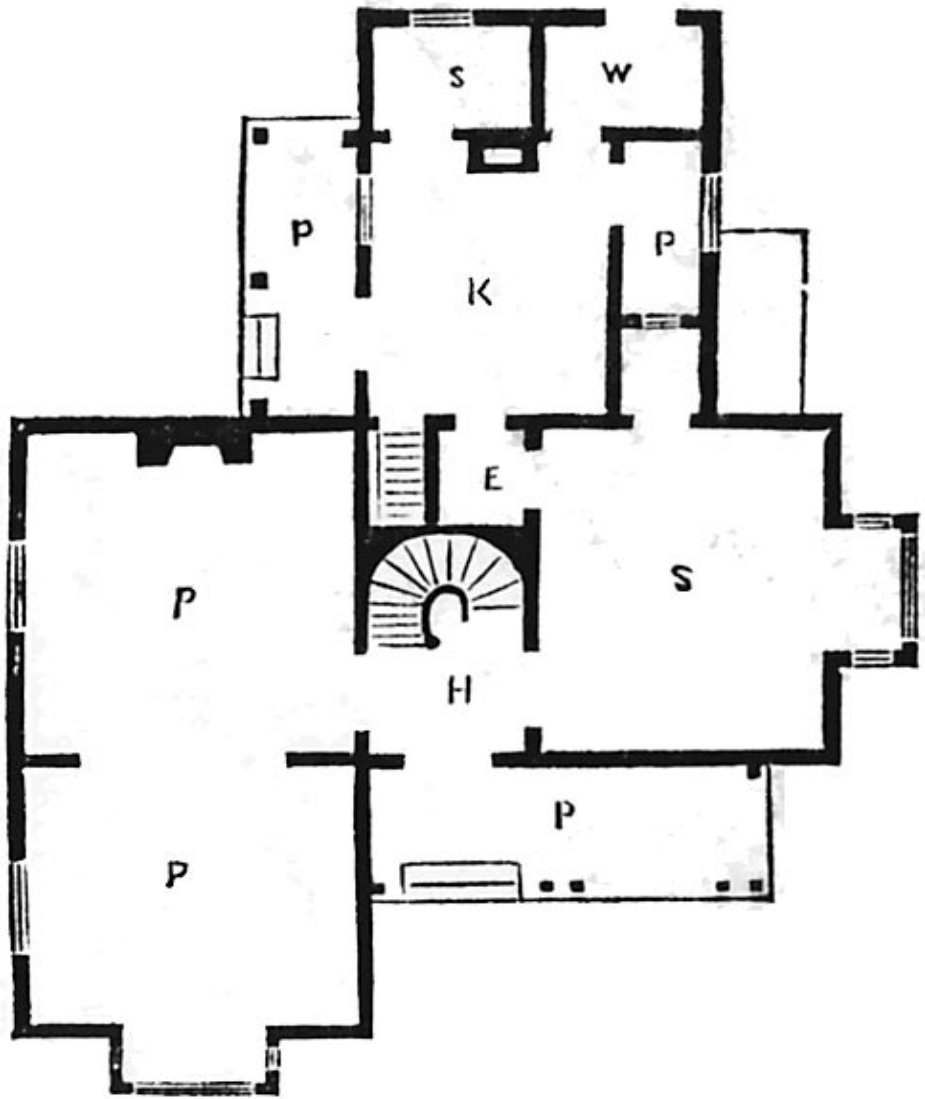


Second floor. C, C, bed rooms, 8 x 9 and 11 x 13 feet; P, C, C, closets and passage, per plan.

Design Twenty-Eight.  
A COUNTRY HOUSE.



A country house, front elevation.

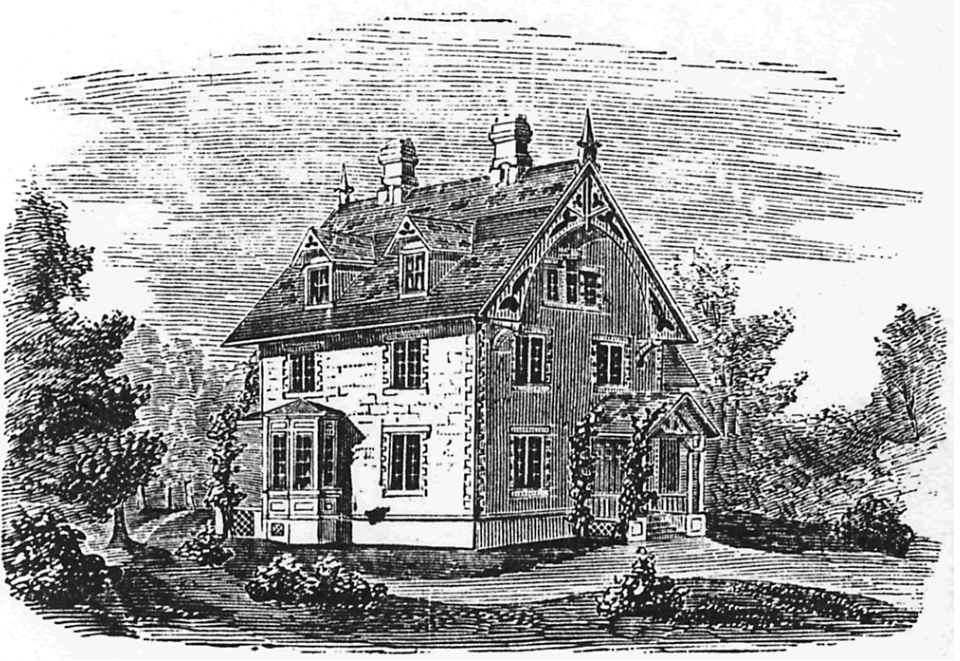


First floor, next page. H, hall, 8 feet wide; P, P, parlors, 14 x 16 and 16 x 16 feet; S, sitting and dining room, 16 x 18 feet; E, entry or lobby, 5 x 5 feet; K, kitchen, 12 x 15 feet; W, wood-house, 5 x 8 feet; S, store room, 5 x 8 feet; P, kitchen pantry, 4 x 9 feet; P, piazzas.

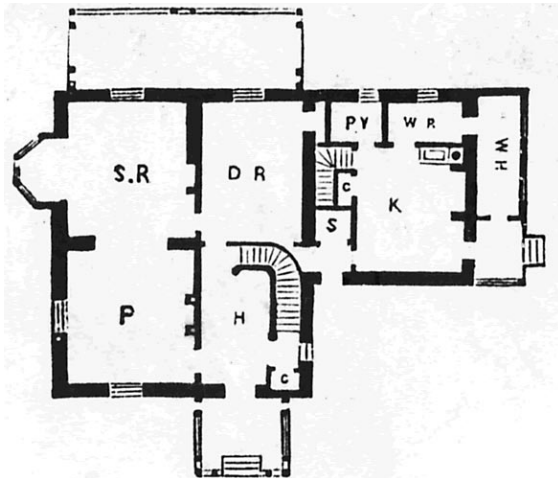
Second floor has 5 rooms and 4 closets. Built of wood.

# Design Twenty-Nine.

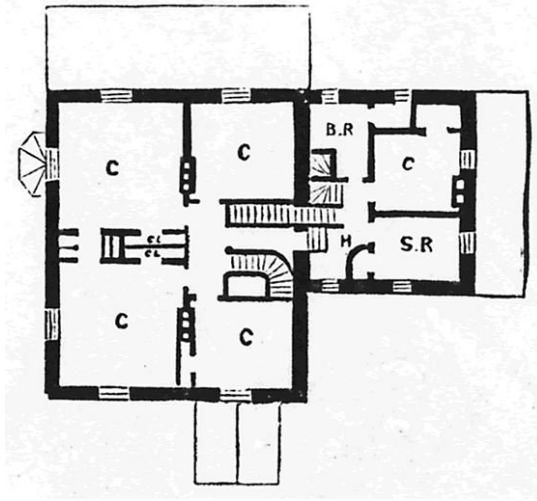
## BRONXVILLE HOUSE.



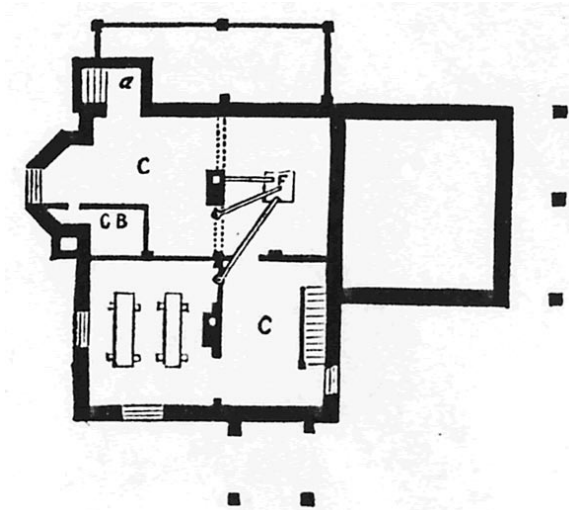
Bronxville house, designed for Francis Bacon, Esq., to be built of stone.



First floor. H, hall, 13 x 17 feet; P, parlor, 15 x 17 feet; S, R, sitting room, 15 x 17 feet; D, R, dining room, 13 x 17 feet; K, kitchen, 13.5 x 15 feet; W, R, wash room, 6 x 10 feet; P, Y, pantry, 6 x 6 feet; S, store room, 4 x 4.5 feet; W, H, wood house, 5 x 15 feet.

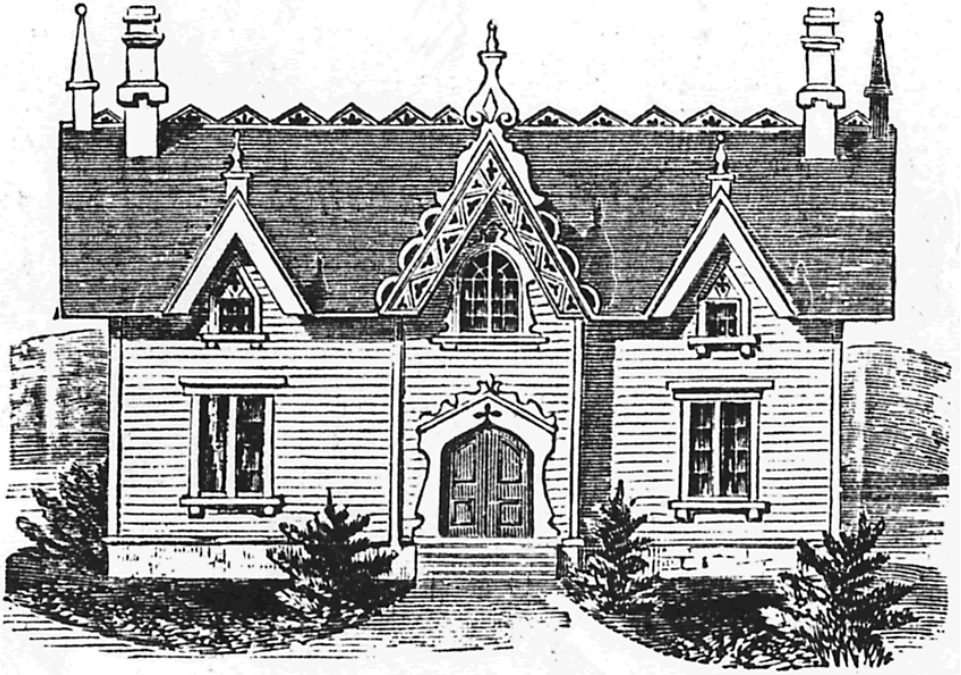


Second floor. C, C, C, C, C, bed chambers, 14 x 15, 15 x 15, 11 x 13, 10.5 x 13, and 9 x 10 feet; B, R, bath room, 7.5 x 9.5 feet; S, R, servants' room, 8 x 10 feet; H, hall.



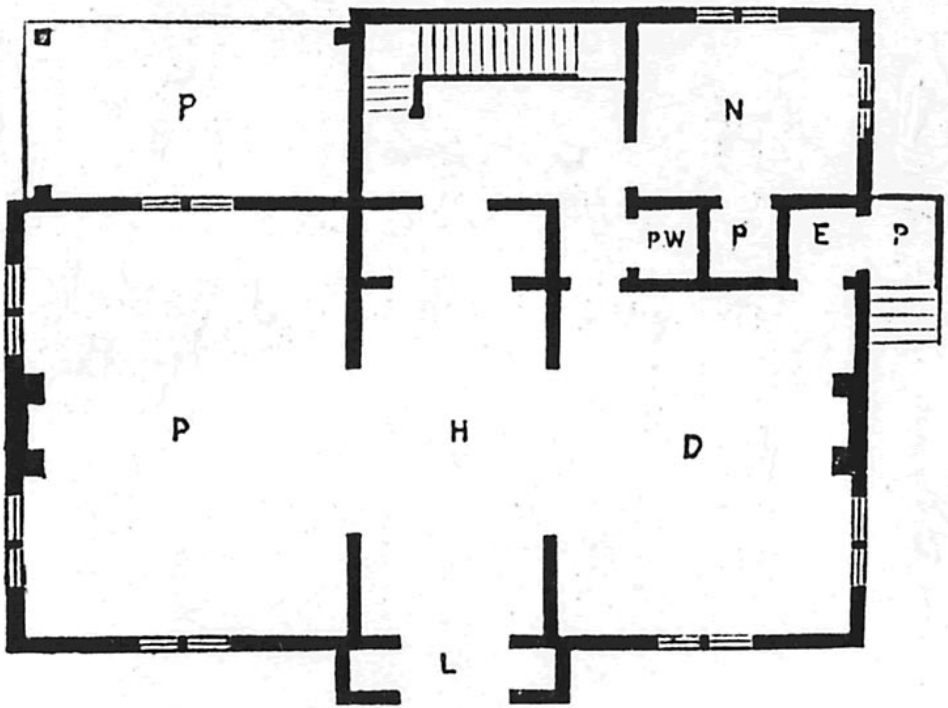
Basement. A, area; C, C, cellar; C, B, coal bin.

Design Thirty.  
A COUNTRY HOUSE.



A country house esigned for Mr. Cole, Sneedens Landing, on the Hudson, front elevation. The above, although designed for wood, we learn, was executed in stone, with full second story.

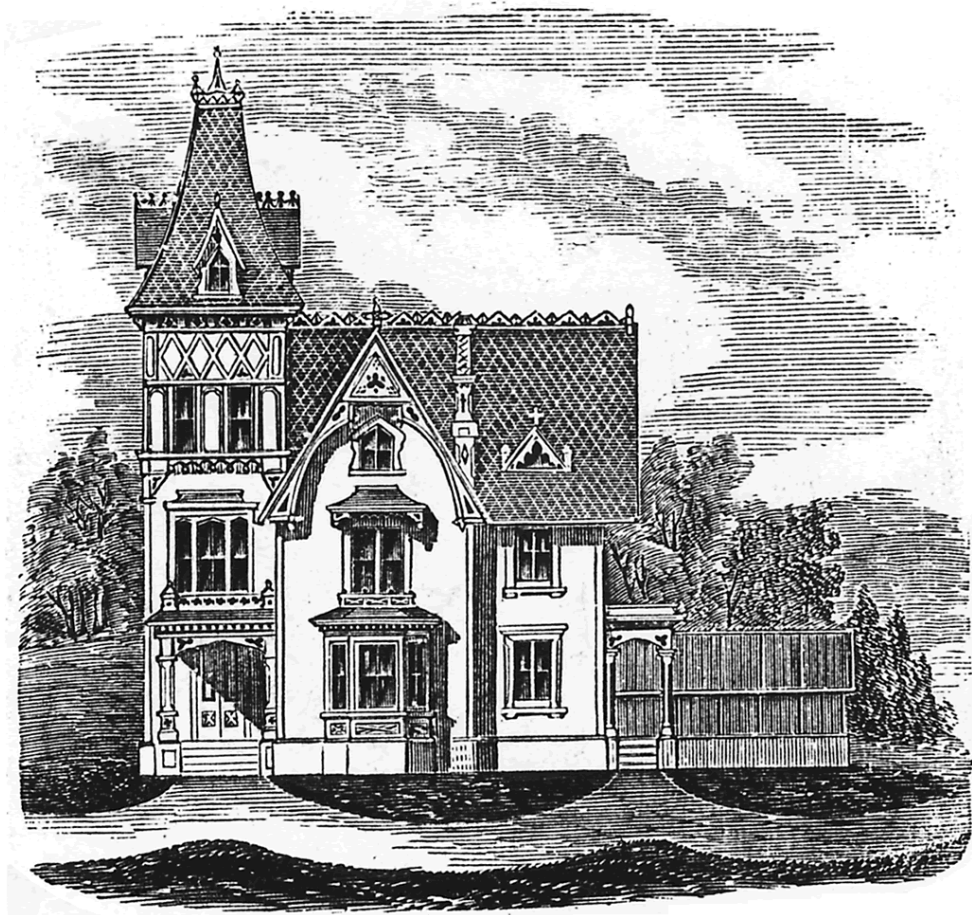




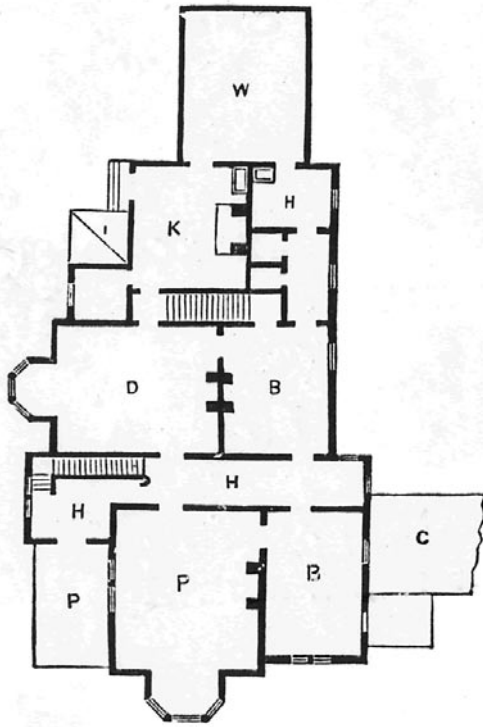
First floor. L, lobby or vestibule; H, hall, 10 x 24 feet; P, parlor, 18 x 24 feet; D, dining room, 17 x 20 feet; N, nursery, 10 x 12 feet; P, piazza, 9.5 x 18 feet; D, W, waiter; P, pantry; E, entry from side porch.

Second story contains five bed rooms and closets.

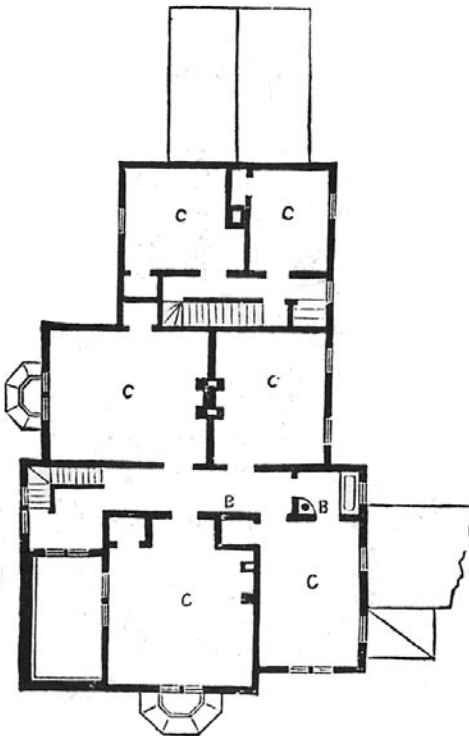
Design Thirty-One.  
MR. J. H. POST'S VILLA.



Mr. J. H. Post's villa designed for erection in wood at Glastenbury, Conn., front elevation.

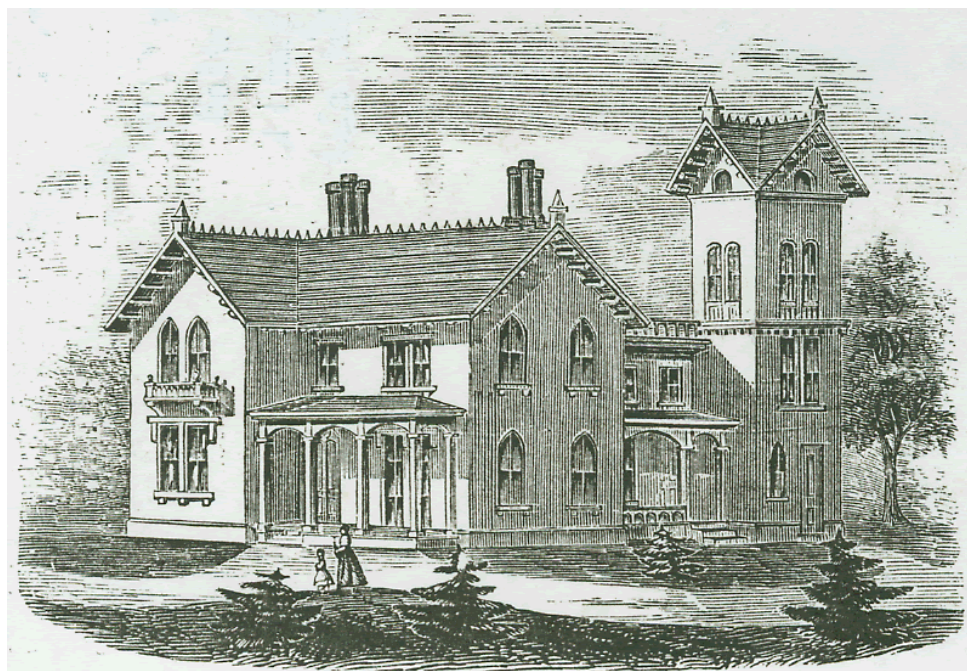


First floor. P, piazza; H, hall, 11.5 x 12.5 feet; P, parlor, 18 x 20 feet; B, library or bed room, 12 x 18 feet; C, conservatory; D, dining room, 16 x 20 feet; B, bed room, 14 x 16 feet; H, bathing room, 8 x 10 feet; closets per plan.

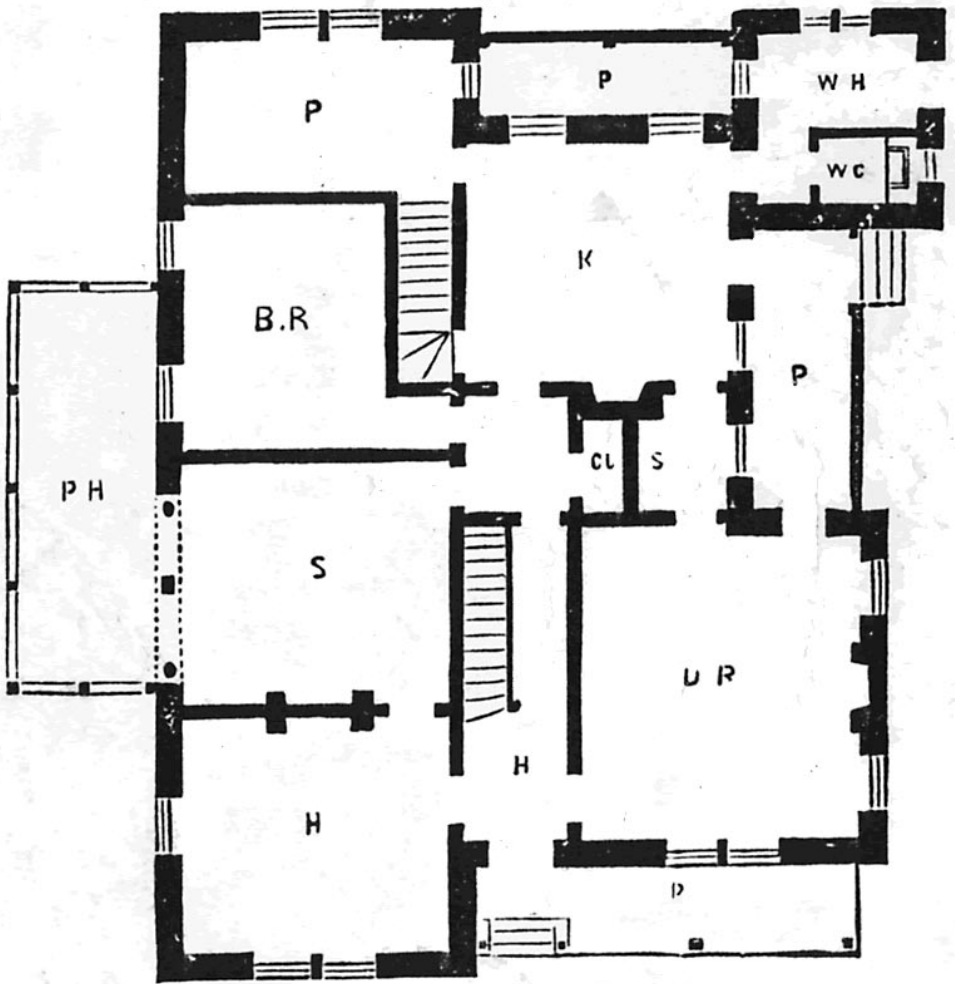


Second floor. C, C, C, C, C, C, bed rooms; B, bath room.

Design Thirty-Two.  
A SUBURBAN DWELLING OF STONE.



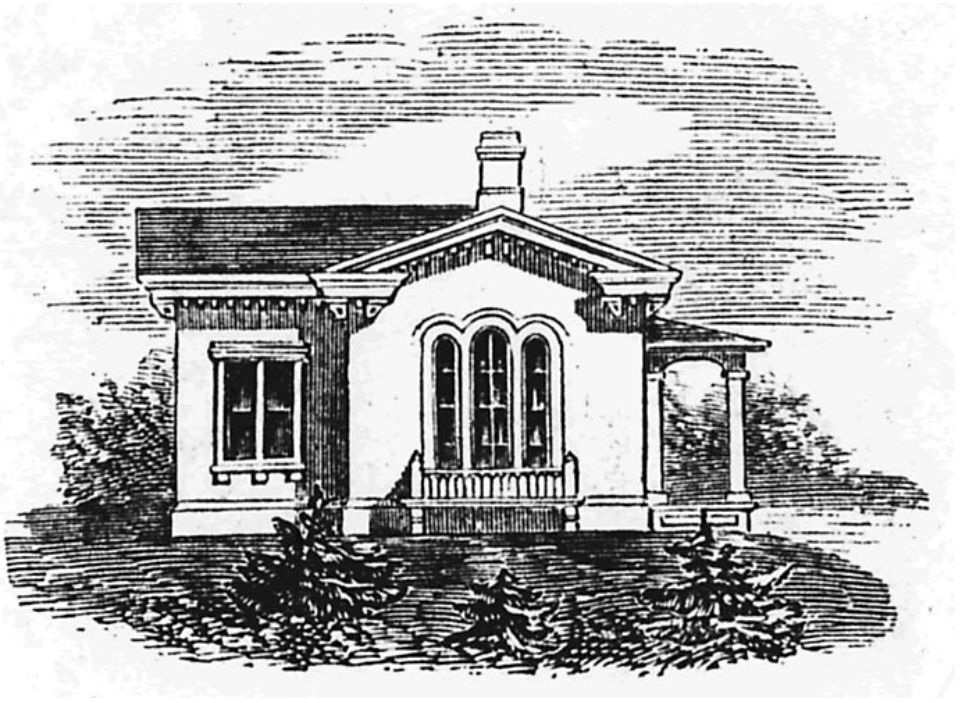
Stone dwelling, perspective view.



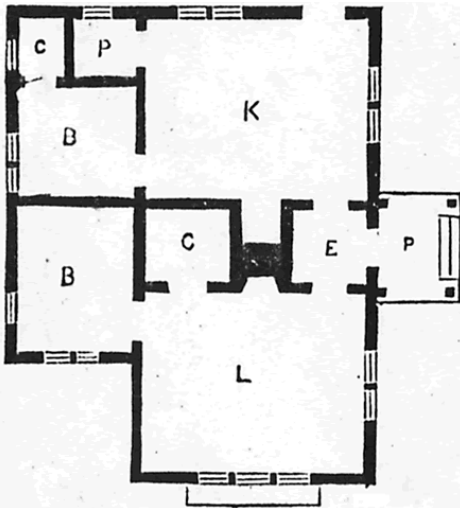
First floor. H, hall; P, parlor, 14 x 15 feet; S, study, 14 x 15 feet; P, H, plant house; D, R, dining room, 16 x 18 feet; K, kitchen; 14 x 16 feet; P, pantry, 9 x 15 feet; B, R, bed room, 11 x 14 feet; C, L, closets; S, side-board; W, H, coals and wood; W, C, water closet; P, P, piazzas.

Second floor contains five rooms and closets.

# Design Thirty-Three. LABORER'S COTTAGE.



Laborer's cottage, front elevation, built of wood.



First floor. P, porch, 10 x 10 feet; E, entry or lobby, 8 x 8 feet; L, living room, 16 x 20 feet; K, kitchen, 16 x 20 feet; B, B, bed rooms 10 x 12 and 10 x 10 feet; C, C, closets, 8 x 8 and 4 x 5 feet; P, pantry, 5 x 5 feet.