



HOMES
FOR THE
PEOPLE

G. WHEELER

1855



House designs and plans
extracted from the book
Homes for the People, 1855.

Merrymeeting Archives, LLC © 2004
www.thevictorianhouse.com

**Please consult your architect
for current prices,
safety codes, and local regulations**

HOMES FOR THE PEOPLE,

IN

Suburb and Country ;

THE VILLA, THE MANSION, AND THE COTTAGE,

ADAPTED TO AMERICAN CLIMATE AND WANTS.

WITH EXAMPLES SHOWING HOW TO

ALTER AND REMODEL OLD BUILDINGS.

In a series of One Hundred Original Designs.

BY

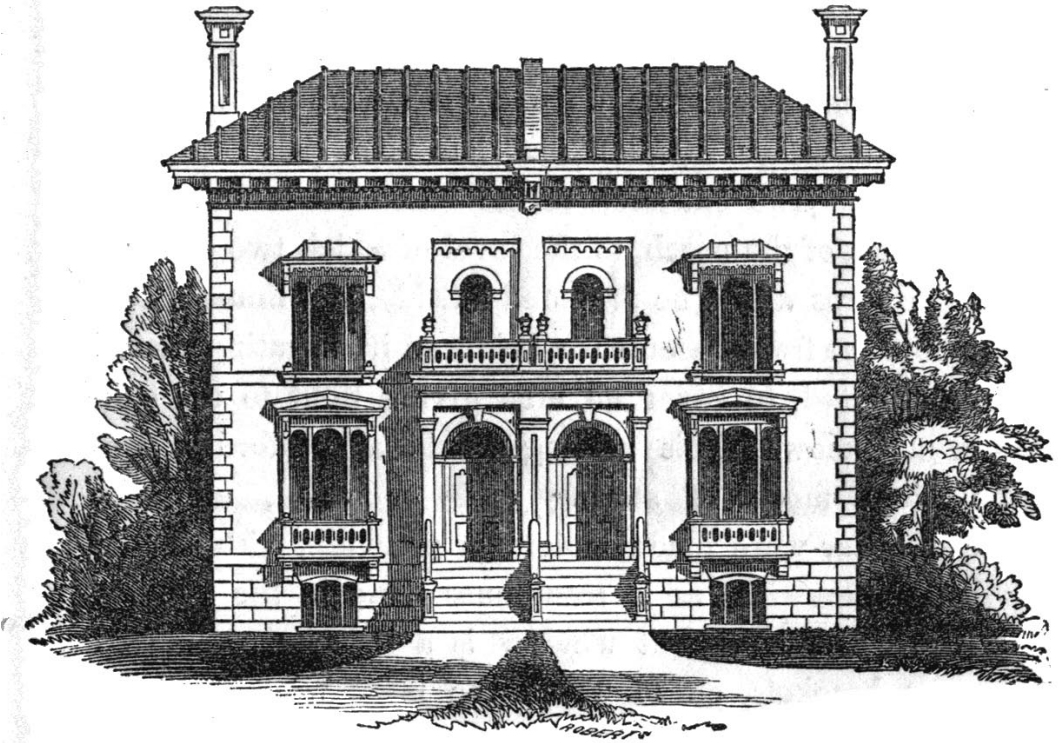
GERVASE WHEELER, Architect,

AUTHOR OF "RURAL HOMES," ETC.



NEW YORK:
CHARLES SCRIBNER, 145 NASSAU STREET.

1855

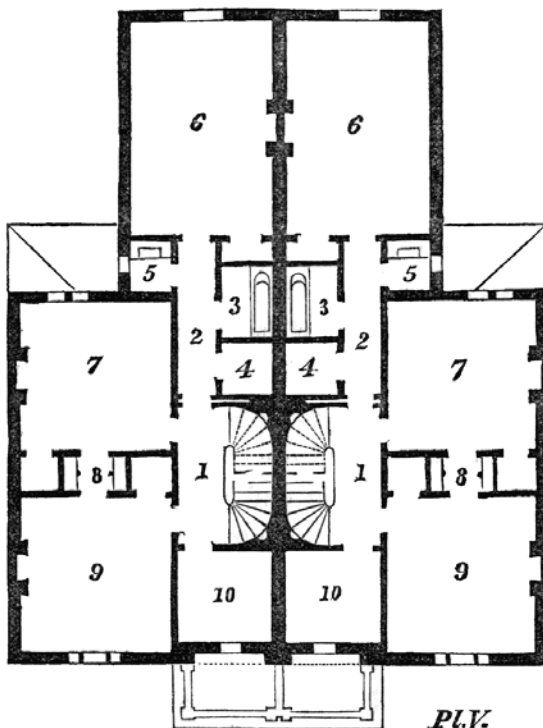
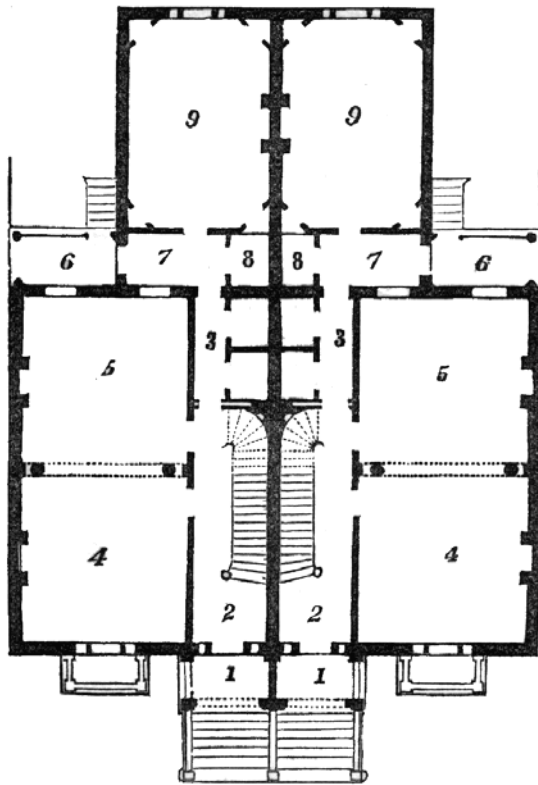


PL. VI.—ELEVATION.

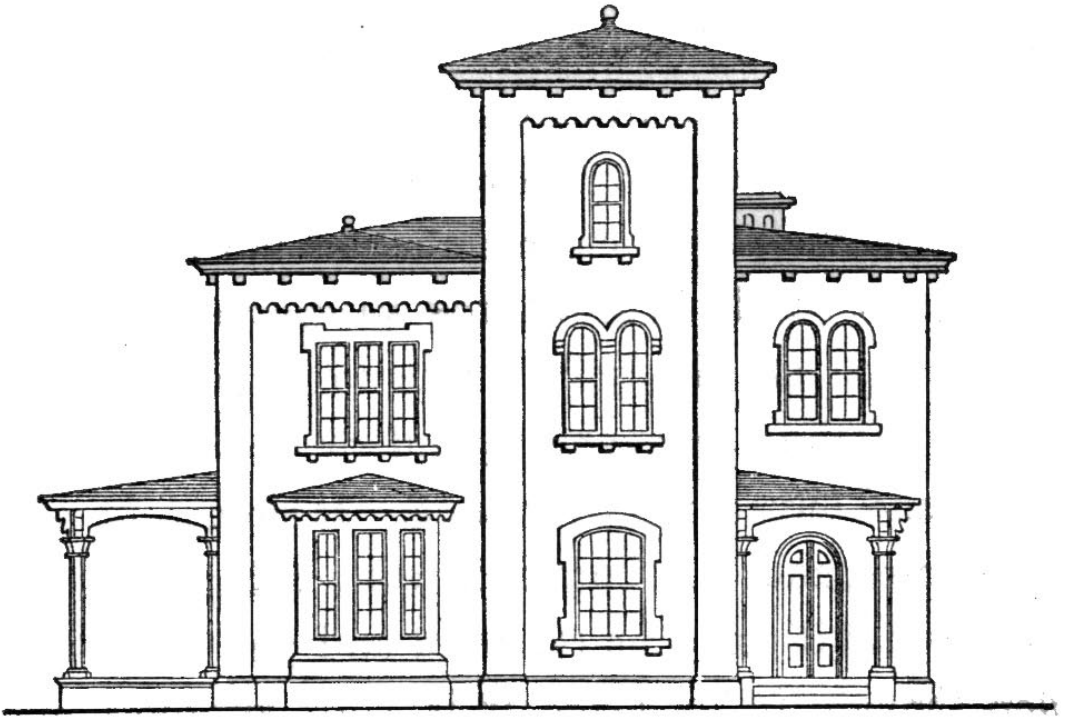
A SEMI-DETACHED VILLA IN THE SUBURBS

Plan of Principal Floor PL. IV: A roomy porch, **No. 1**; a hall-door opens into the entrance-hall, **No. 2**; Beyond, in the rear, is an inner vestibule, **No. 3**, shut off from the main hall by a sliding door filled with stained glass, and in it are store and hat and coat closets. The drawing rooms, **No. 4** and **No. 5**, are in one open suite, broken by columns. The rear drawing-room has two stained glass windows, one opening into a small veranda, **No. 6**, the other into a vestibule, **No. 7**, a waiter-pantry, **No. 8**, or china-closet opening into the dining-room, and with a dumb waiter communicating with the domestic offices below. The dining-room, **No. 9**, is of octagon form, each angle containing a small closet.

Plan of Chamber Floor PL. V: A central hall (lighted from above), **No. 1**; passage, **No. 2**; bath-room, **No. 3**; linen closet, **No. 4**; a roomy water-closet, **No. 5**. Beyond these is a chamber, **No. 6**, the same size as the dining-room below. Three chambers, **Nos. 7, 8, and 10**, well provided with closet; between 7 and 9, and entry, **No. 8**, is provided, so that the rooms may connect. Over this portion of the plan are two large and airy rooms in the attic.



PL.V.

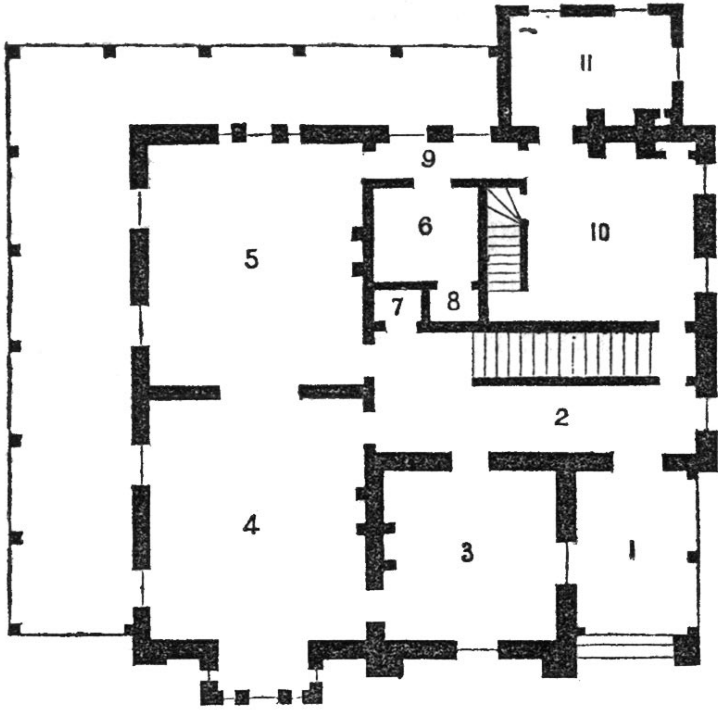


PL. VII.—ELEVATION OF SMALL SYMMETRICAL VILLA .

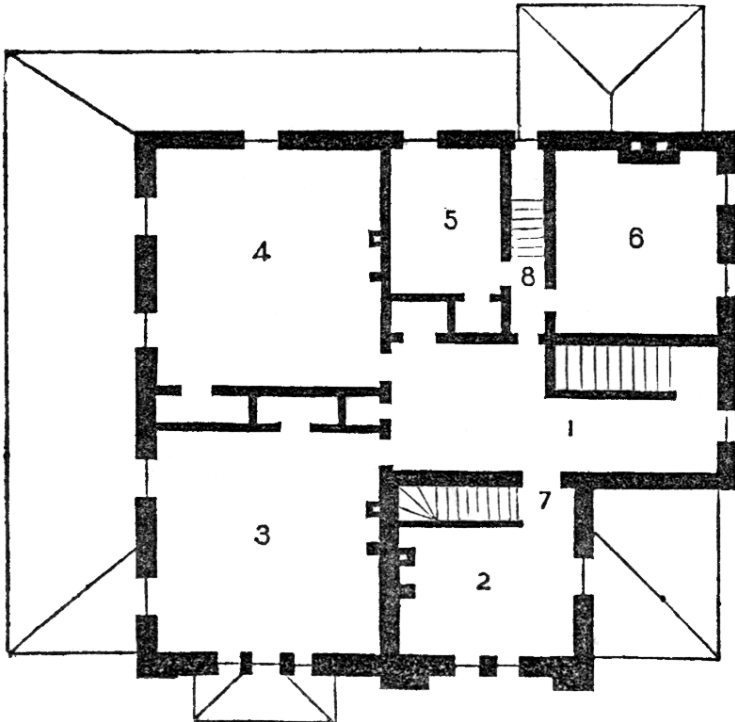
SMALL SYMMETRICAL VILLA

Plan of Principal Floor PL. VIII: Entrance porch, No. 1; hall, 10' or 11' wide, No. 2; library, 15' square, No. 3; drawing-room, 16'6" x 22', No. 4; dining-room, 16' x 20', No. 5; large hall closet, No. 7; adjoining the dining-room is a passage, No. 9, leading into the kitchen, and also opening upon the back piazza; between the dining-room and kitchen is a large pantry, No. 6—lighted by a glass door, and within it a china closet, No. 8. The kitchen—No 10, has connected with it a large laundry or back kitchen, No. 11, and also has a back and cellar stairway.

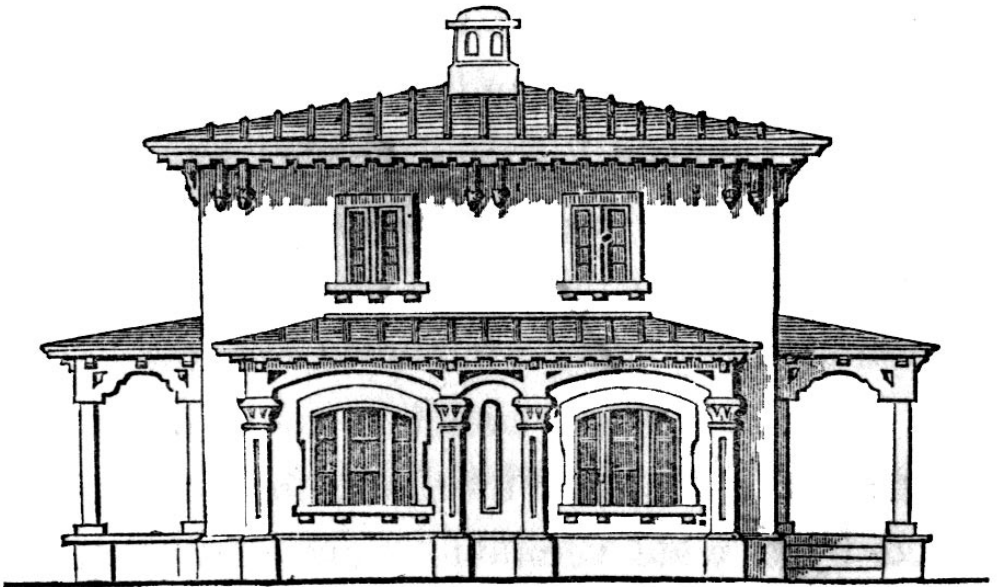
Plan of Chamber Floor PL. IX: A large open hall, No. 1; sleeping-room over the library, 12' x 15', No. 2, having a space taken from it to contain a stairway, No. 7, to the upper room of the tower, which is immediately over this. No. 3 and No. 4 are of the same size as the drawing and dining-rooms—less the space occupied by the closets—No. 5 is a small sleeping room or bathroom—No. 6 a chamber, and No. 8 the back stairs from below.



PL. VIII.—PLAN OF PRINCIPAL FLOOR.



PL. IX.—PLAN OF CHAMBER FLOOR.

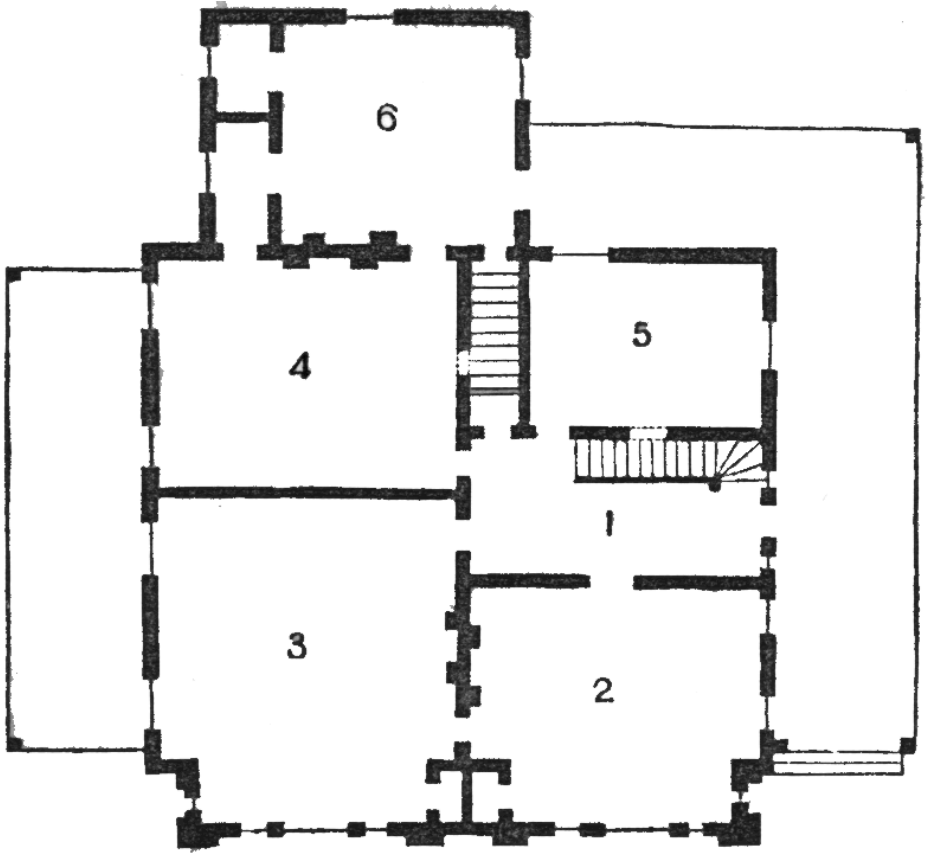


PL. X.—FRONT ELEVATION

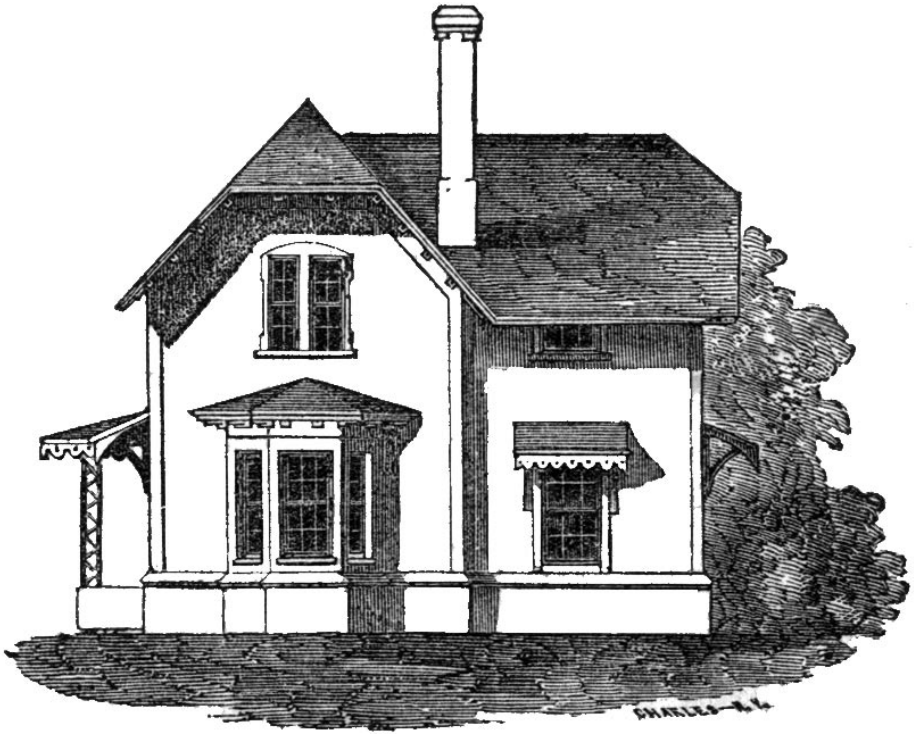
SMALL SYMMETRICAL VILLA

Plan of Principal Floor *Pl. XI:* The principal stairway, **No. 1**; library or morning-room, 16' x 14', **No. 2**; parlor, 16' x 21', **No. 3**; dining-room, 16' x 15', **No. 4**; hall, 9' wide; kitchen, **No. 6**, attached to which is a sink-room. There is also a back and cellar stairs, permitting the other necessary domestic offices to be in the cellar below; supposing the space, **No. 5**, which in this particular instance is reserved as a sleeping-room, 10' x 13', be kept for that purpose, or if not, its position would allow store-room, scullery, or other requisite apartment for household use.

Above are five good chambers, well supplied with closets, and if necessary, rooms can be made under the roof on the back part of the building, lighted by windows between the brackets under the cornice.



PL. XI.—PLAN OF PRINCIPAL FLOOR.

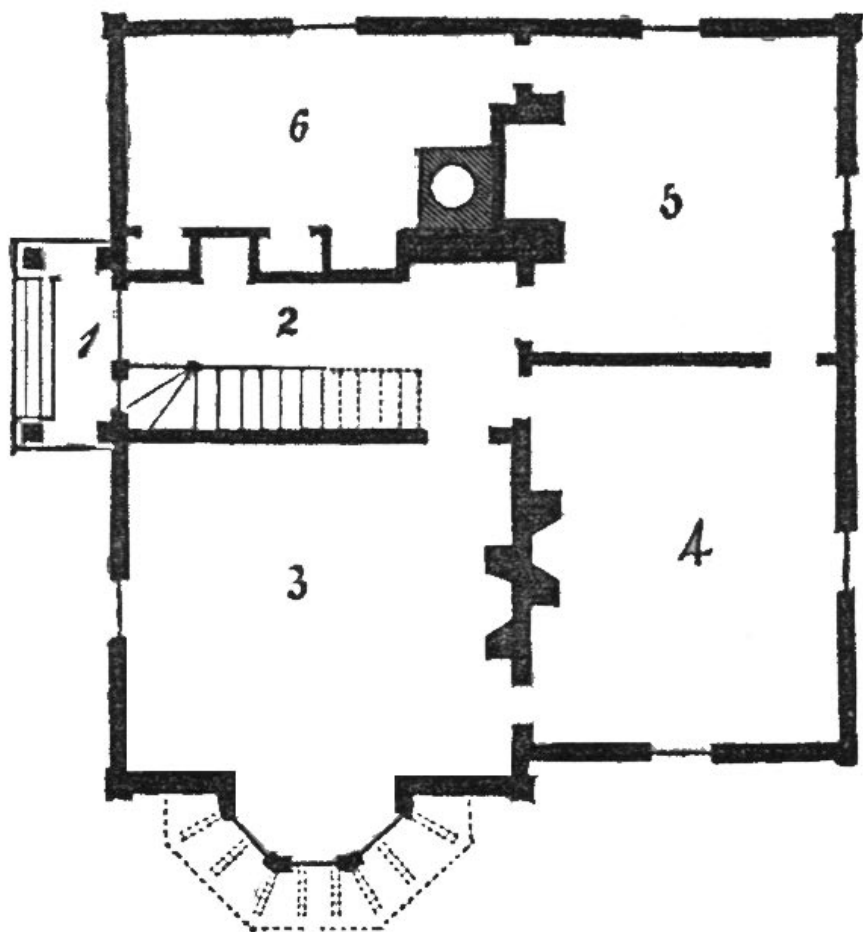


PL. XII.—ELEVATION.

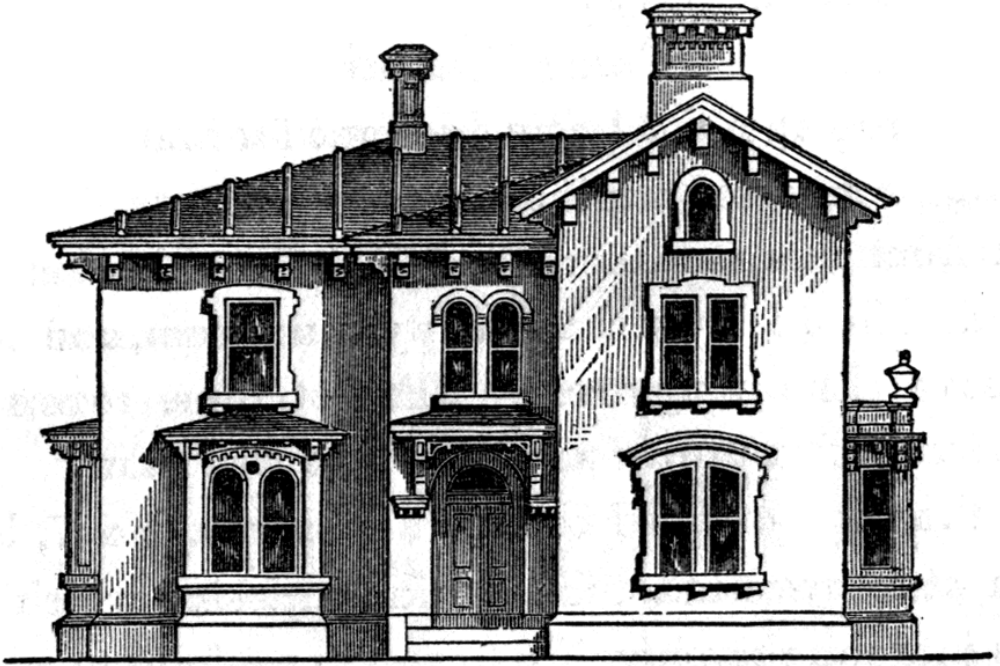
A LITTLE VILLA

Plan of Principal Floor PL. XIII: The entrance is at the side, a light rustic porch, **No. 1**, sheltering the hall door. The hall, **No. 2**, contains the staircase, and is 7' wide, increased at its one end to 8'3", forming lobby to the rooms. In front is a parlor, **No. 3**, a cheerful, pleasant room with a bay window overlooking the street and a smaller window on the side. This room is 15' square exclusive of the bay window, which projects four feet. **No. 4** is the family dining and living-room, which communicates with the parlor before described, with the hall, and also with the kitchen **No. 5**. The kitchen has attached to it a scullery or laundry, **No. 6**, which is well provided with closets, and this completes the distribution of the rooms upon this floor.

The chamber accommodation is equal to that below, comprising three good rooms over parlor, dining-room and kitchen, and a servants room over the scullery. Closets can conveniently be planned, and within the prescribed limits much comfort can be provided for.



PL. XIII.—PLAN OF PRINCIPAL FLOOR.



PL. XVI.—SMALL COUNTRY VILLA—FRONT ELEVATION.

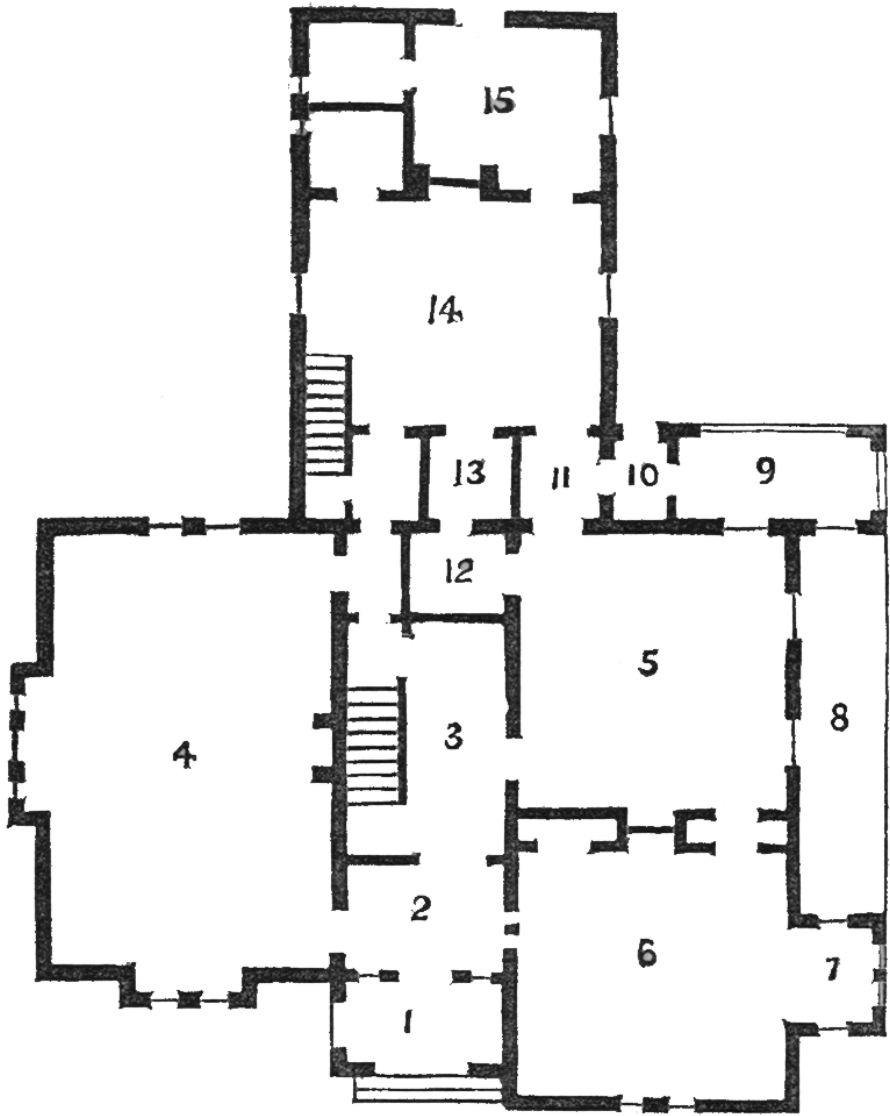
SMALL COUNTRY VILLA

Plan of Principal Floor PL. XIV: This plan represents a building somewhat irregular in form, yet compelling to no waster of space in its internal arrangements. The principal entrance is made by means of an open porch, **No. 1**; entrance hall, **No. 2**, between which an inner hall, 9' wide, **No. 3**, is filled with glass and double doors; drawing-room, **No. 4**, 30' x 16', with projecting bay windows in the front and upon one side; dining-room, **No. 5**; family parlor or library, **No. 6**, with a deeply imbayed window, or rather wing, **No. 7**, which is sufficiently large to make a pleasant little retreat for quiet reading or writing. Its window on one side opens upon a covered terrace, **No. 8**, the end which is terminated by a small conservatory, **No. 9**, a view into which can be obtained from the projecting bay in the parlor. Connected with the conservatory is an entry, **No. 10**, which communicates with the domestic offices, and is also a means of exit to the garden. **No. 11** is a passage connecting dining-room and kitchen, provided with shelves, and

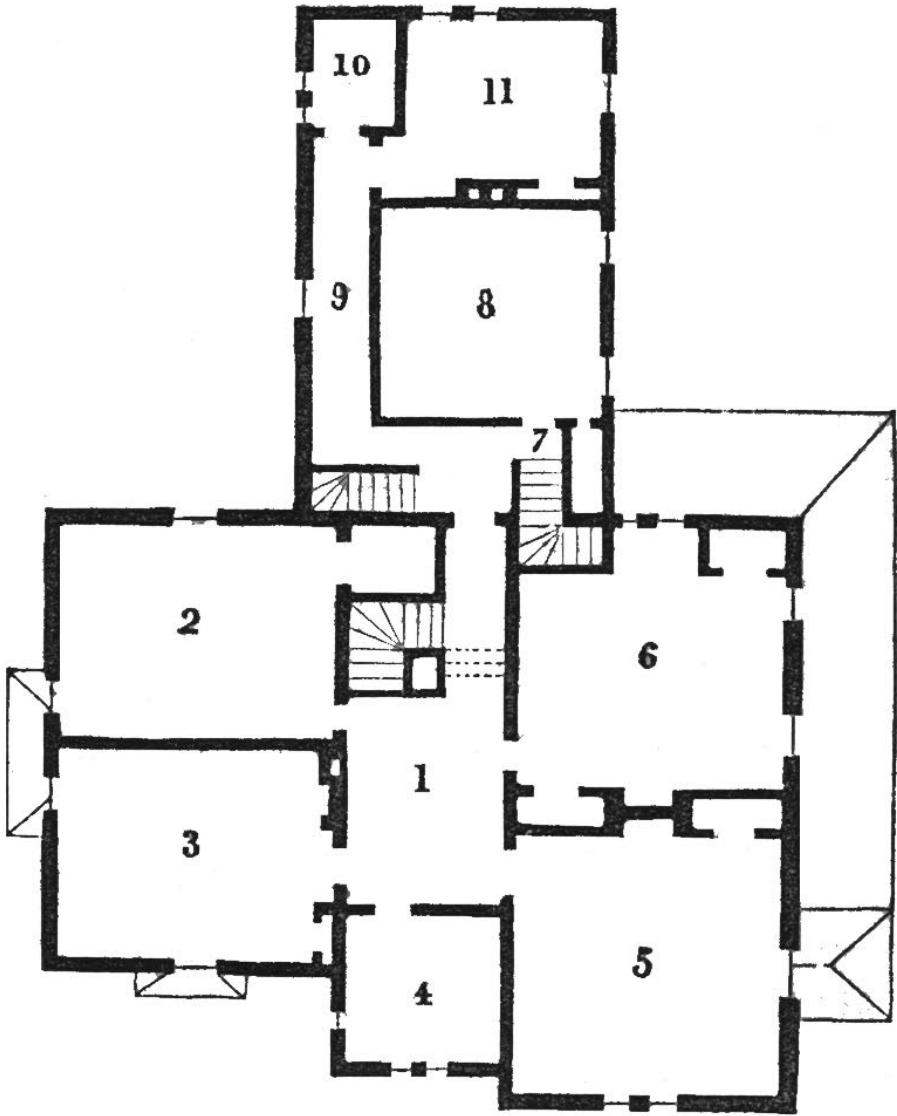
other conveniences that permit it to be used as a serving-room during meal times. **No. 12** is the store and china closet, connected with the dining-room, and **No. 13** is one of similar intention, connecting with the kitchen, having a sliding door between them for passing the contents one from the other. All these useful features for domestic convenience are of ample size. **No. 14** is the kitchen, 16' x 14', conveniently near the main body of the house, and yet so shut off, by means of double entries and other separation, as to be no annoyance. From it leads the servant's stairway, to the floor above, under which is also a flight leading to the cellar below. **No. 15** is the laundry and scullery; connected therewith is a store closet, and next to it (opening into the kitchen) one for use of the cook. In the laundry is an outside door leading to the yard and stables, a suitable plan for which will be found in the plan titled "Stable and other Outbuildings."

Underneath the whole of this floor is a cellar seven feet high in the clear, containing vegetable, milk, and store-rooms, as also receptacles for coals, and space for the furnace.

Plan of Chamber Floor Pl. XV: Upper hall, **No. 1**, lighted by a dome overhead, which is inserted in the attic floor, and illuminated by glass level with the roof, in such a manner as not to be observed from outside the building; **No. 2** and **No. 3** are large chambers over the drawing-room, **No. 2** being designed for family use, and having connected with it a very large closet. In front is a smaller room over the entrance porch, **No. 4**; over the family sitting-room, **No. 5**; and above the dining-room, **No. 6**. Each of these rooms has abundant closet provision. In the wing of the building, a stairway, **No. 7**, leads to an attic overhead, the partition inclosing which projects into the chamber, 6. **No. 8** is a chamber of liberal size, connected with which is a large closet, beside the stairway to attic. **No. 9** is a corridor, leading from the head of the private stairway to a bathing-room, **No. 10**, and a servant's sleeping-room, **No. 11**.



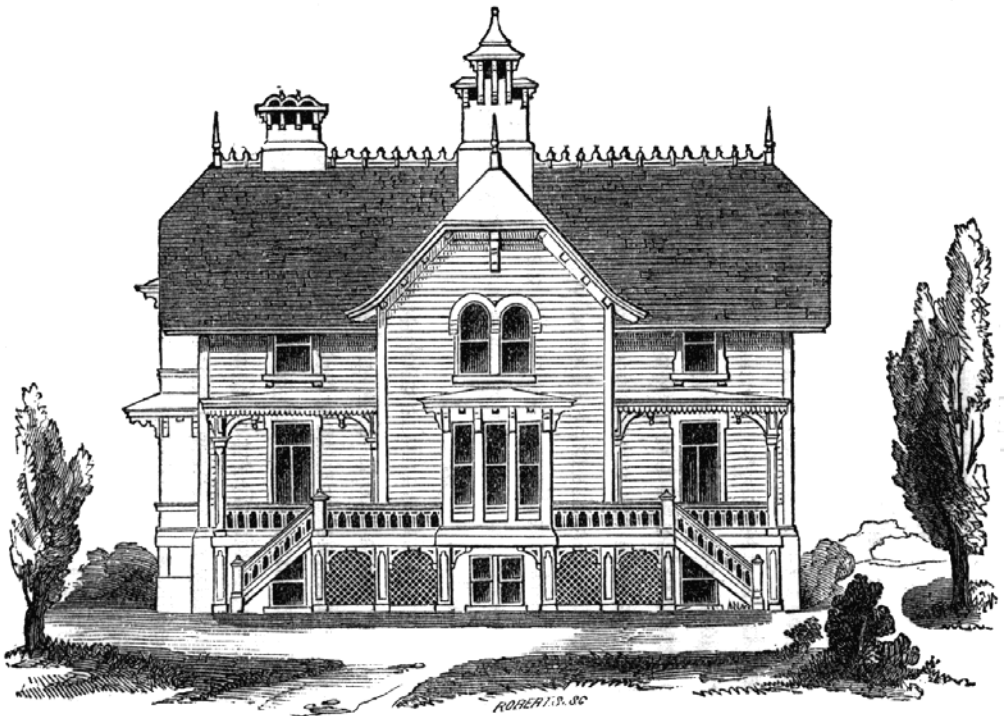
PL. XIV.—SMALL COUNTRY VILLA—PLAN OF PRINCIPAL FLOOR.



PL. XV.--SMALL COUNTRY VILLA—CHAMBER FLOOR.



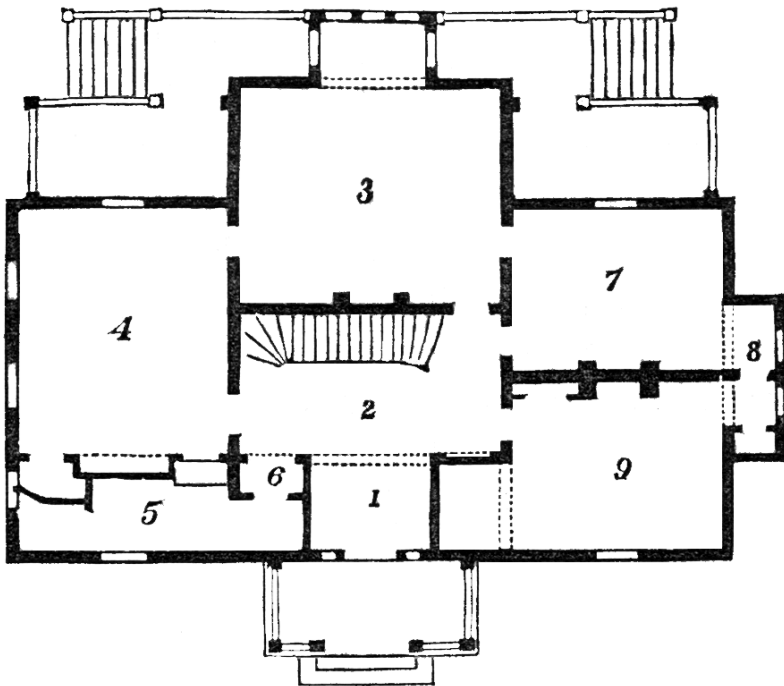
PL. XVIII.—SMALL VILLA ON THE HUDSON—ENTRANCE FRONT.



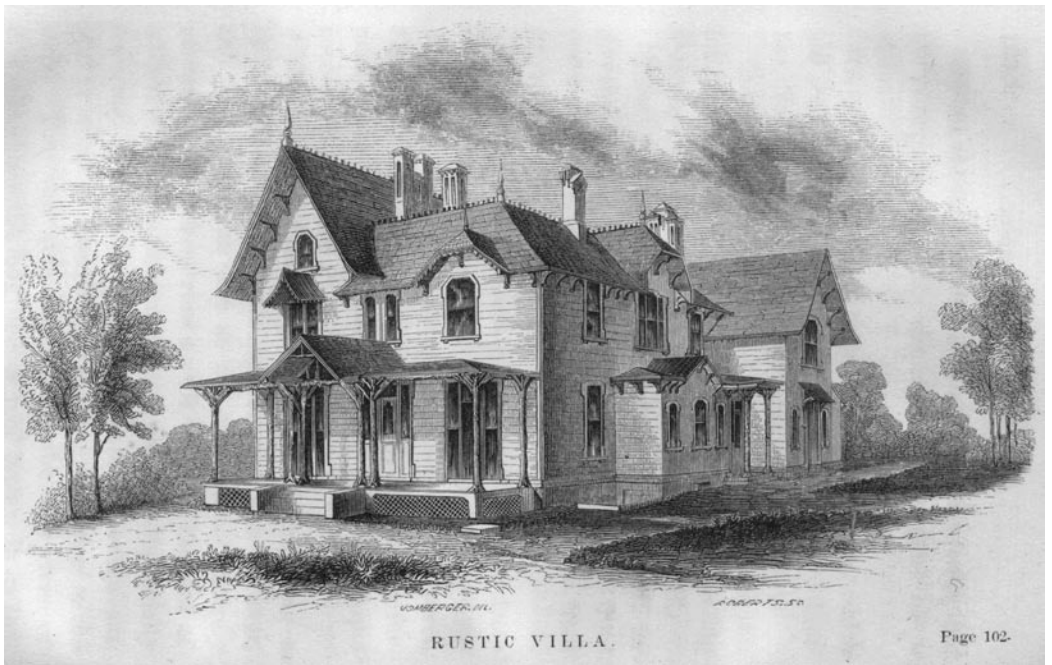
PL. XIX.—SMALL VILLA ON THE HUDSON—GARDEN FRONT.

SMALL VILLA ON THE HUDSON

Plan of Principal Floor PL. XVII: In front is an entrance porch, which may, if wished, be so enlarged as to form a carriage porch for vehicles to drive through. Entering the house is a vestibule, **No. 1**, nearly square, 9' in width, opening by an arch, supported upon brackets, into the staircase hall, **No. 2**, 10' x 20'; drawing-room, **No. 3**, 20' x 16', exclusive of the bay window, 5' x 9'. On one side of the drawing-room is a dining-room, **No. 4**, 18' x 15', having at its one end a recess for sideboard, on one side of which is a dumb-waiter, communicating with the domestic offices and kitchen below, and on the other a store and china closet. Next to this is a large, well-lighted store-room and waiter's pantry, **No. 5**, abundantly provided with closets and shelves, and connecting this with the hall is a closet, **No. 6**, for hats and coats. The other side of the plan affords room for a library, **No. 7**, 15' x 13', opening into the drawing-room and hall, and also by a large bay upon the side of the building, **No. 8**, and which is sufficiently large to make a pleasant nook for reading in the summer, communicating with a bed-room, **No. 9**. The drawing-room, bed-room, and library are provided with fireplaces; the dining-room, hall, and entry being dependent for warmth upon furnace heat from below.



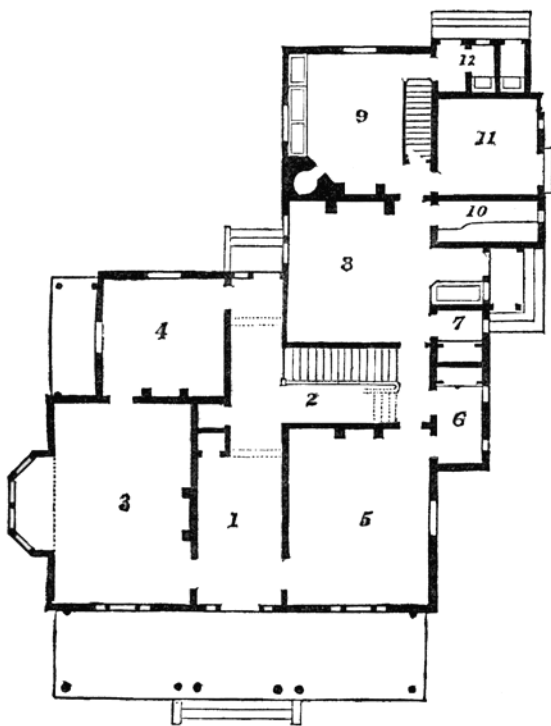
PL. XVII.—SMALL VILLA ON THE HUDSON—PLAN OF PRINCIPAL FLOOR.



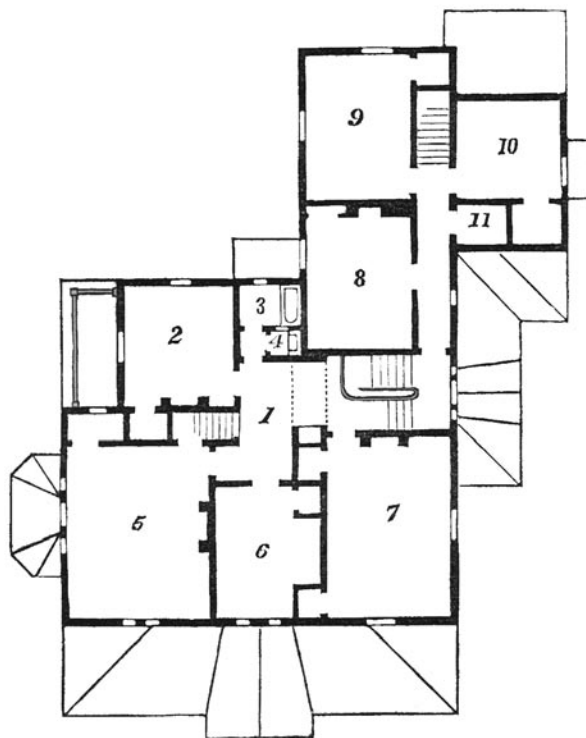
RUSTIC VILLA

Plan of Principal Floor *Pl. XX:* The hall, **No. 1**, 9' x 14', opens at one end into a large closet, and then, by means of an arch, leads into a staircase hall, **No. 2**, which turns off at right angles, and then is continued, but of narrower width. The staircase hall is 8' in width, and has in its further end a door leading to the kitchen and offices. The drawing-room, **No. 3**, 23' x 15', communicates with a library, **No. 4**, 13' x 13'. The dining-room, **No. 5**, 20' x 15', has attached to it a large china pantry, **No. 6**, with an inner closet, and a sash opening into the staircase hall, so that dishes, &c. may be conveniently passed from the kitchen. The store-closet, **No. 7**, communicates with the kitchen, **No. 8**, 15' x 15'. In this part of the plan is also the laundry, **No. 9**, with a private staircase to the floor above; a larder, **No. 10**, and a wood-house, **No. 11**, with a rear entry from the laundry, **No. 12**, and two necessaries.

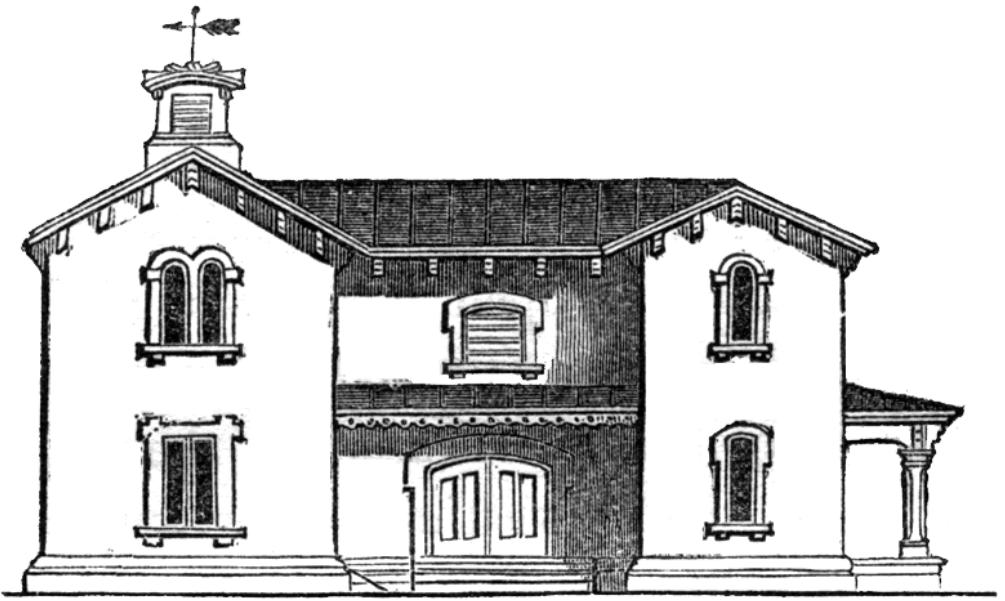
Plan of Chamber Floor *Pl. XXI:* The staircase leads into a central hall, **No. 1**, 10' x 10', out of which opens a chamber, **No. 2**, and a bath-room and W.C., **Nos. 3 and 4**. From this hall a staircase conducts to the attic overhead, and a corridor, opening from which is a large chamber, **No. 5**, with a closet under the stairway to the attic, a dressing-room, with window towards a pleasant balcony, which is shaded by the overhanging roof above. **No. 6 and No. 7**, 13' x 20', are bed-rooms with ample closets.



PL. XX.—RUSTIC VILLA—PLAN OF PRINCIPAL FLOOR.



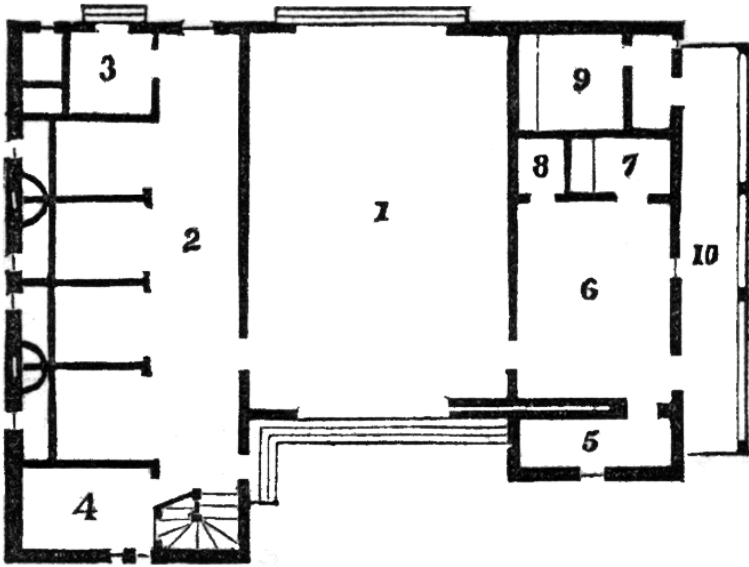
PL. XXI.—RUSTIC VILLA—CHAMBER FLOOR.



PL. XXIV.—STABLE AND OUTBUILDINGS—ELEVATION.

STABLE AND OUTBUILDINGS

Ground Plan *Pl. XXIII*: **No. 1** is a carriage-house, with sliding door in front, and with other doors in the rear, so as to permit, if occasion require, a vehicle to be driven through. **No. 2** is the horse-stable, divided into four stalls. **No. 3** is a cow-stable, partitioned off from the rest, and having a door and window opening into the rear yard. At this end of the building is a door for the removal of manure. **No. 4** is the man's room, with hooks for the harness, and next to it is a stairway leading to the floor above; a closet connected with the harness-room being left underneath. Upon the other side of the building, formed by the partition necessary for the reception of the sliding-door of the carriage-house, is a knife-room, **No. 5**, or if not so required to be used, there might be constructed in its stead an ice-room, partly sunk below the ground and partly above. **No. 6** is a large wood-house, the door to which is from a covered walk, **No. 10**, which is screened from view by an ornamental trellis upon the side, over which vines or other creepers could be trained. **No. 7** is a necessary for the use of servants, **No. 8** a sink, and **No. 9** a room of similar use as 7, the entrance to which is made private by a double partition, the outer door not opening at the same point as that within.



PL. XXIII.—STABLE, AND OTHER OUTBUILDINGS—GROUND PLAN.

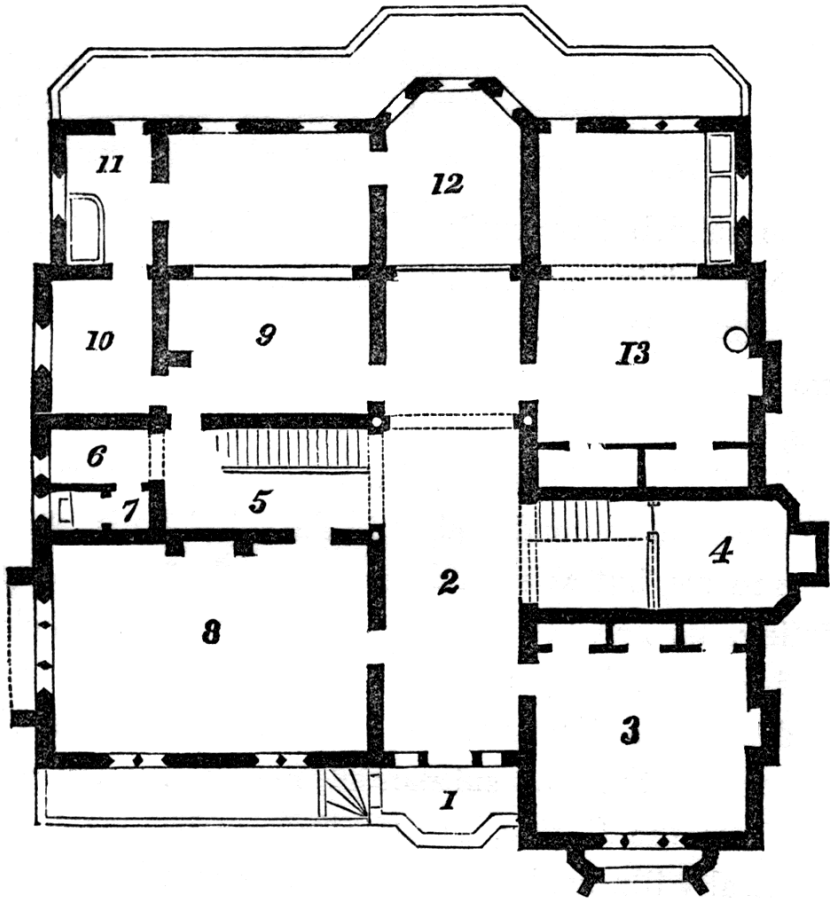


GOTHIC SUBURBAN VILLA

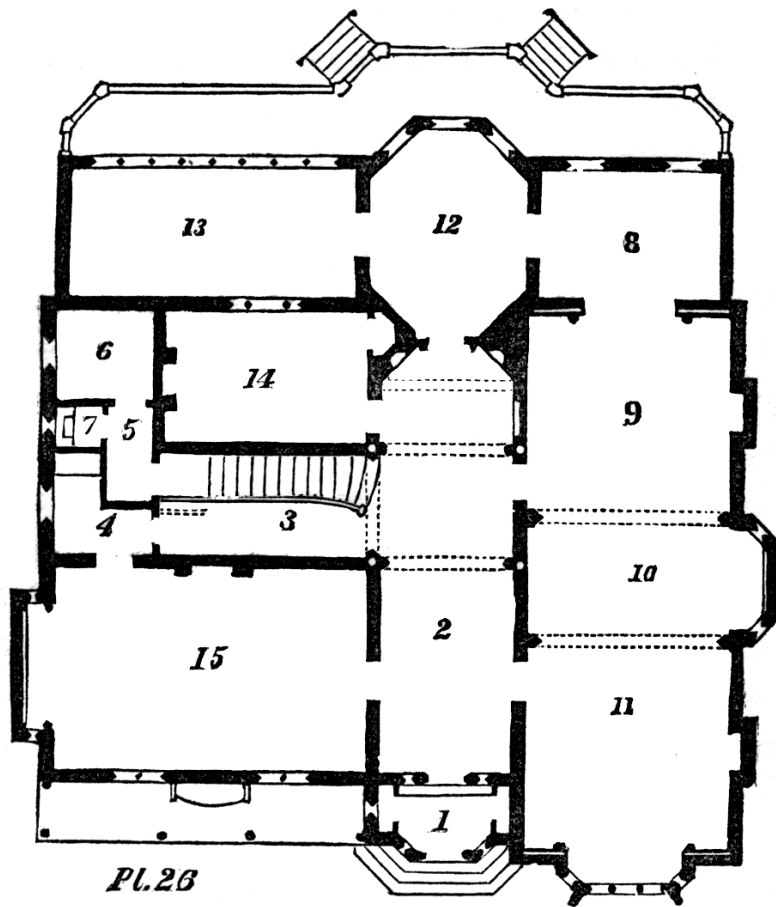
Plan of Basement Floor *Pl. XXV*: The building has a frontage of about 57', exclusive of some small projections. **No. 1** is a porch; **No. 2** is the hall, 10' wide. On one side is a room, **No. 3**, 16' x 16', and well stored with lock-up cupboards and shelves, for the use of the housekeeper, forming both a store-room and basement sitting-room, the height of the story making it perfectly suitable for pleasant occupancy. **No. 4** is reserved for the furnace, and is sunk down to the depth of the cellar below, and inclosed with an iron railing and stairway. At right angles to the entrance hall is that containing the staircase, **No. 5**, which is 8' wide, and is lighted by a window in the passage, **No. 6**, in which is a water-closet, **No. 7**, for the use of this floor. In front, with large windows upon one side towards the area, and with one of ample width at the end, is a billiard-room, **No. 8**, 24' x 16'. In one corner is a triangular space for a wash-basin, &c—and in the other a similar space partitioned off to form a closet for cues. Upon the other side of the staircase hall is the kitchen, **No. 9**, 15' x 23'; a store-room, **No. 10**; next to it, a scullery, 8' x 10', and sink; a large larder, **No. 12**; and a laundry, **No. 13**.

Plan of Principal Floor, Pl. XXVI: The entrance porch, **No. 1**, projects from the central portion of the building, and is sheltered by the wing, which stands forward at the side. On each side of the inner doors is a arch-headed window, filled with stained glass, and within the doors is the entrance hall, **No. 2**, 10' wide. Rather more than midway, the staircase hall, **No. 3**, leads from it at right angles, and the intersection is marked by arches forming overhead groined ceiling, from which a pendent lamp would sufficiently illuminate each portion of the halls. At the end of the staircase hall is a serving-room or waiter' pantry, **No. 4**, well lighted and conveniently placed in relation to the dining-room, **No. 15**, 24' x 15'; it connects with the offices by means of a dumb-waiter, which is framed in the recess shown upon the plan. **No. 5** is a private vestibule, leading to a large store closet, **No. 6**, 8' x 7', and in this passage is a convenient and retired nook for the water-closet upon this floor, **No. 7**. There is suite consisting of a drawing-room, **No. 11**, 16' x 18'; a saloon, **No. 10**, 12' deep, only divided on each side by an arch; In the rear of this is an apartment, **No. 9**, 16' x 18', with sliding glass door at the end, which, when open, prolong the suite of rooms to an extension in the rear, **No. 8**, which is 12' deep and runs across the entire rear of the building; an octagonal boudoir, **No. 12**; and a large conservatory, **No. 13**. The remainder of the plan exhibits a library, **No. 14**, with a fire-proof safe closet. The dining-room is immediately in front.

Plan of Chamber Floor Pl. XXVII: The landing is marked **No. 1**, upon the plan, and from it a door leads into an inner entry, **No. 2**, upon one side of which is a W.C., and at the end a bath-room, **No. 3**. These conveniences are upon a lower level than the remainder of the chamber-floor, to gain which latter a flight of steps conducts from the landing to the principal hall upstairs, **No. 4**. The principal sleeping room upon this floor is **No. 5**. The bed is intended to be placed in the recess that corresponds to that contrived for the side-board in the room below. There are two large closets provided, and in addition, the chamber **No. 6**, 10' x 12' may be used either as a dressing-room, or for separate accommodation. Adjoining chamber, **No. 7**, 16' x 16', is a pleasant room, **No. 8**, 9' x 14'. **No. 9** is of similar size as 7, and next to it is a chamber, **No. 10**, 10' x 12'. **No. 11** completes the sleeping accommodation of this floor, making seven well-proportioned and pleasant rooms.

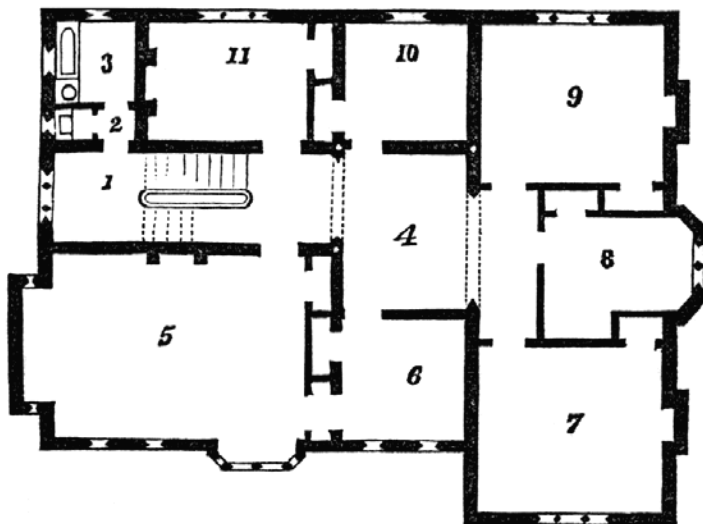


PL. XXV.—SUBURBAN GOTHIC VILLA—BASEMENT PLAN.

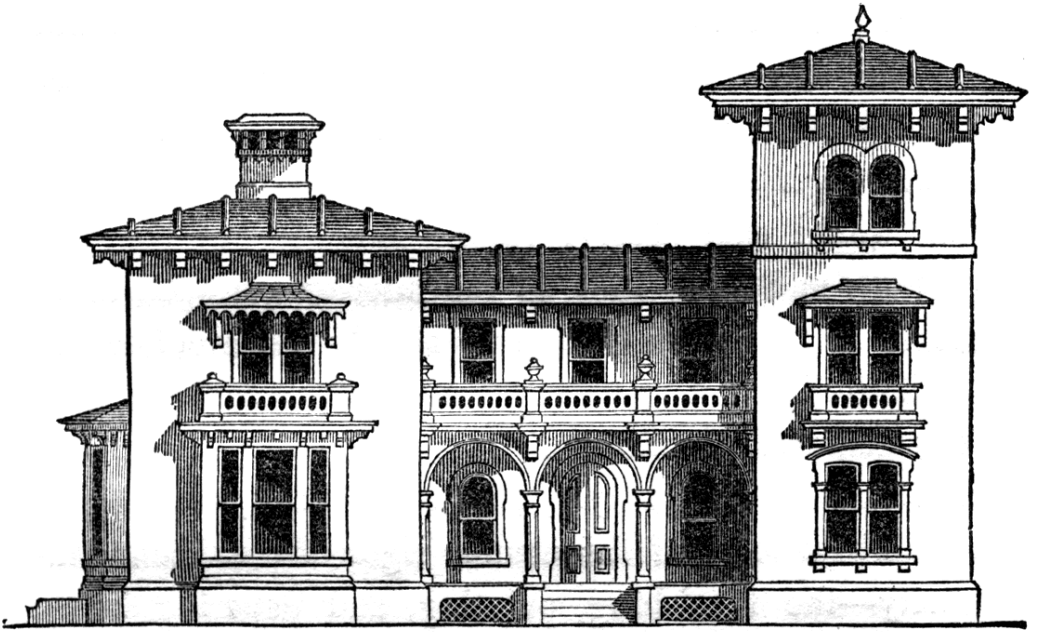


Pl. 26

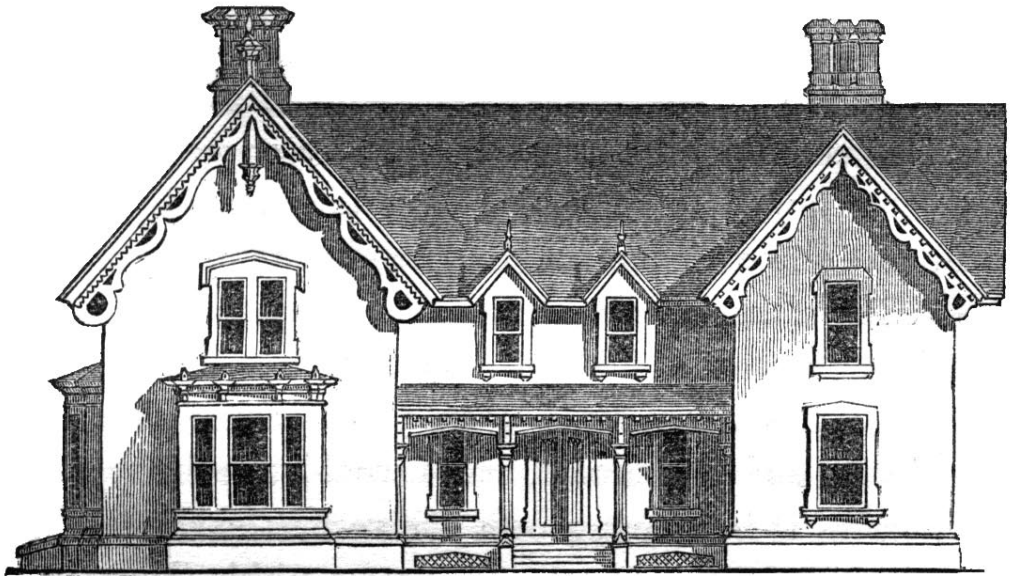
Pl. XXVI.—SUBURBAN GOTHIC VILLA—PLAN OF PRINCIPAL FLOOR.



Pl. XXVII.—SUBURBAN GOTHIC VILLA—CHAMBER FLOOR.



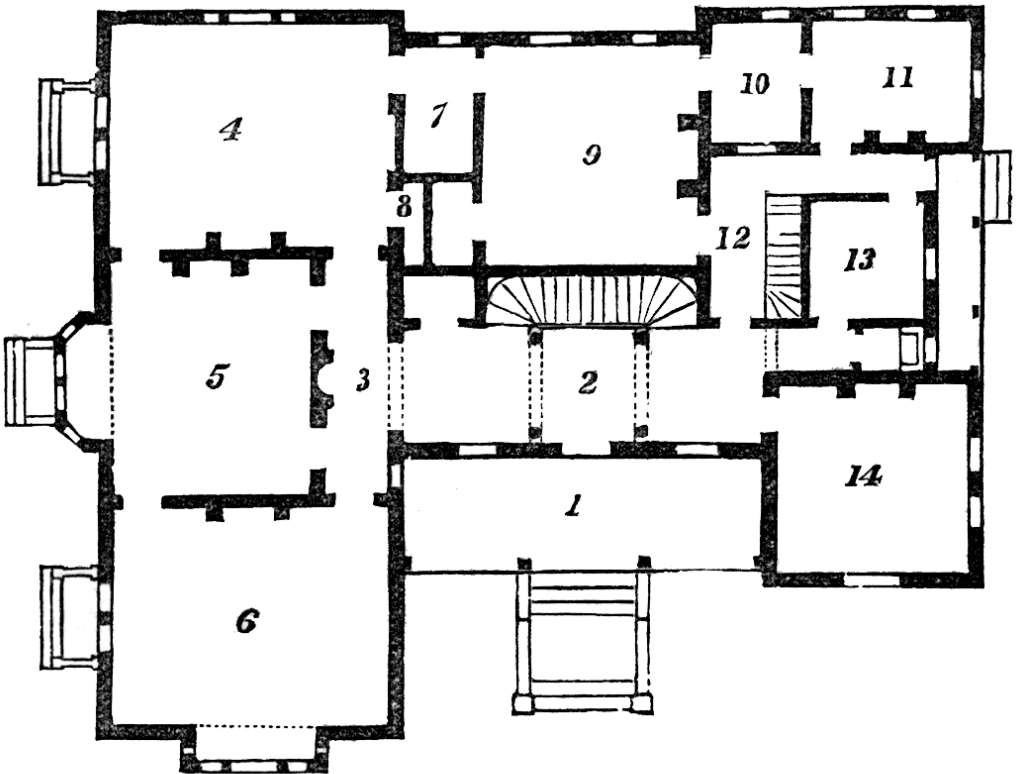
PL. XXX.—LARGE VILLA IN ROMAN STYLE—ELEVATION.



PL. XXXI.—ELEVATION OF SAME VILLA IN ENGLISH RUSTIC STYLE.

ENGLISH RUSTIC OR ROMAN-STYLE VILLA

Plan of Principal Floor *Pl. XXIX*: The entrance, No. 1, is under a wide arcade in front, 10' x 28', equally divided by columns and arches into three openings. The principal hall, No. 2, 10' wide, at the end a large closet, and beside it a wide arch opens into a vestibule, No. 3, 5' wide. The dining-room, No. 4, 17' x 22', library, No. 5, 18' x about 16', and the drawing-room, No. 5, 17' x 22' all connect with each other, and also with the vestibule, and form a most symmetrical and elegant suite. Connecting the dining-room with the domestic offices is a large store-room and waiters' pantry, No. 7, 6' x 9'. In addition to this is a separate china-closet, No. 8, with a door into the dining-room, and a store-closet from the kitchen, No. 9, 16' x 16'. the kitchen is connected to the sink-room or scullery, No. 10, and beyond this a laundry, No. 11, 12' x 15'. The inner hall No. 12 has a private staircase which leads to the chambers and cellar. In addition to these is a sleeping-room for a man-servant, No. 13.



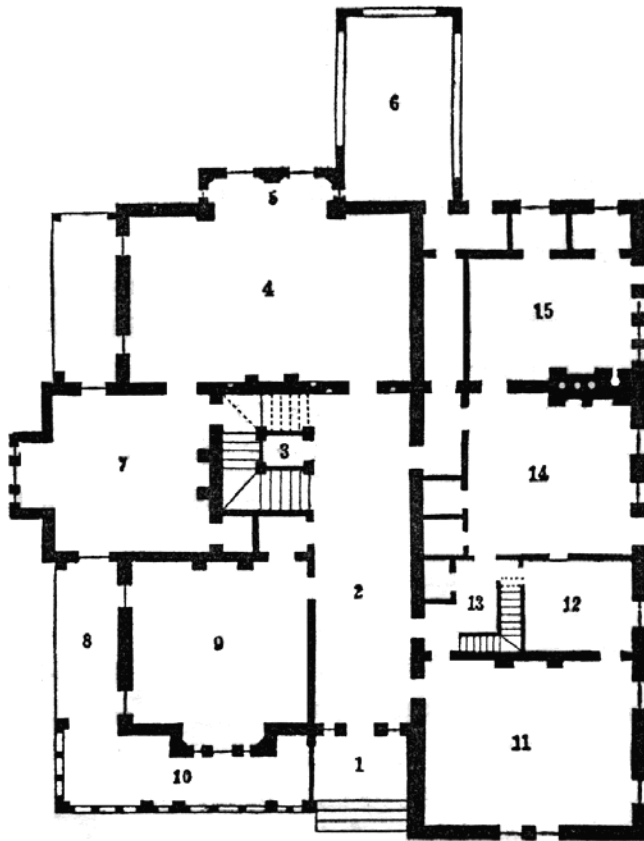
PL. XXIX.—PLAN OF PRINCIPAL FLOOR.



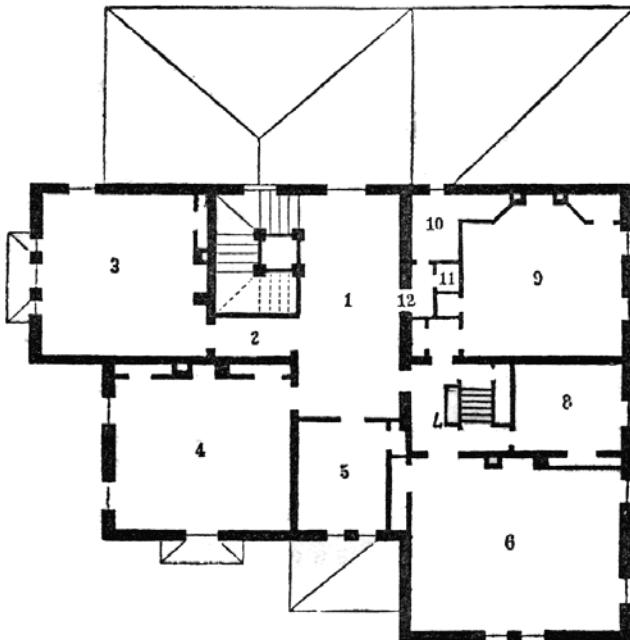
SUBURBAN VILLA

Plan of Principal Floor *PL. XXXII:* **No. 1**, is the entrance porch, leading from which is the hall, **No. 2**, with the principal stairway, **No. 3**. The drawing room, **No. 4**, 27' x 17', is relieved from monotony of effect by the large bay window, **No. 5**. This window with a large arched opening from the room leads through a door window on one side into a conservatory, **No. 6**. The library, **No. 7**, is a square room forming the lower member of the tower. The family sitting-room, **No. 9**, 17' x 17', opens to a veranda, **No. 8**, and with a projecting oriel in front communicating with a terrace, **No. 10**, which joins the veranda. The dining-room, **No. 11**, 18' x 23', connects to the sewing-room and butler's pantry, **No. 12**. Next to this is an inner hall, **No. 13** in which is the servant's staircase to the cellar and to the floors above. The kitchen, **No. 14**, is conveniently near to the living rooms. Back of the kitchen is a large laundry, or second kitchen, **No. 15**.

Plan of Chamber Floor *PL. XXXIII:* Corridors and halls, **No. 1**, **No. 2**, **No. 7** and **No. 12**. Rooms and chambers, **Nos. 3, 4, 5, 6, 8, 9**, with bath-room, **No. 10**, water-closet, **No. 11**.



PL. XXXII.—PLAN OF PRINCIPAL FLOOR.

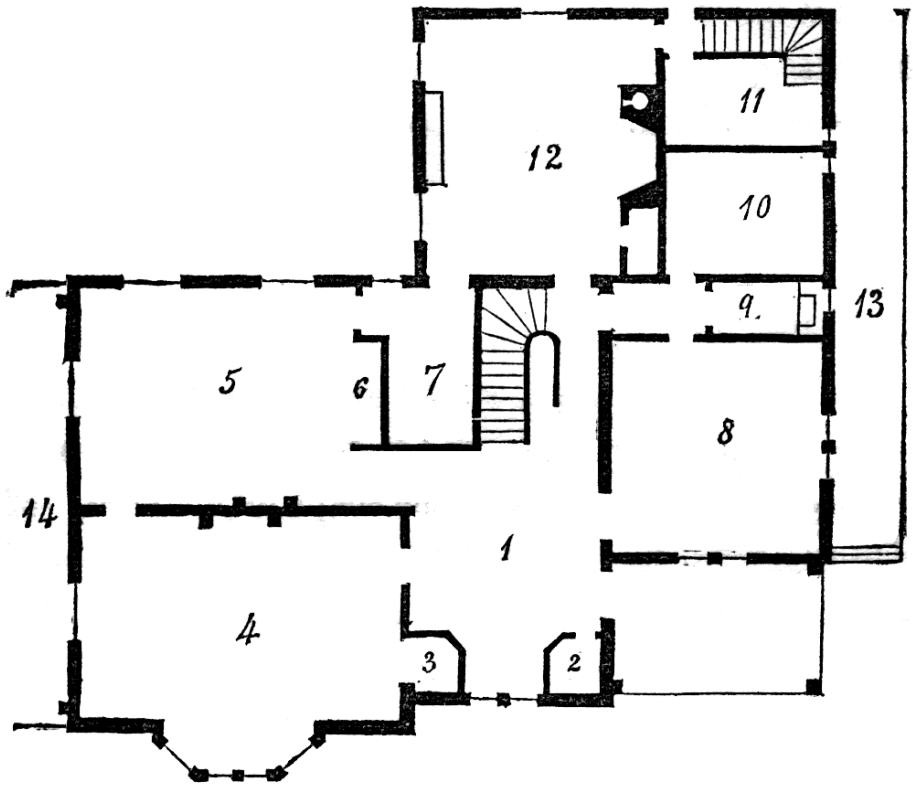


PL. XXXIII.—PLAN OF CHAMBER FLOOR.



COTTAGE VILLA

Plan of Principal Floor *Pl. XXXV*: The ground floor comprises an entrance hall, **No. 1**, the external door to which is protected by a wide porch communicating with a terrace, **No. 13**, at the side of the building, which extends to the back door on the rear side. In the hall, which is of large size is a species of recessed window, formed by the closets **No. 2** and **No. 3**; the former being for the hall, the latter communicating with the drawing-room, **No. 4**, with a bay window, **No. 14**. The dining-room, **No. 5**, has a recess for side-board, **No. 6**, at one end. The butler's pantry or serving-room, **No. 7**, from which is a slide door on to the side-board in the dining-room. On the other side of the hall is a library, **No. 8**. This private study communicates with **No. 9** and **No. 10**, the water-closet and bathroom, **No. 10** being sufficiently large to permit of being used as a chamber when extra accommodation would be needed. **No. 11** is a large store-room in which is a stairway into the basement below and to the floor above. **No. 12** is the kitchen, a large handsome room so proportioned as to permit its destination to be the dining-room, and the latter to be made a library in case the family were content to use the ample and well-lighted space in the cellar below for kitchen, &c.



PL. XXXV.—PLAN OF PRINCIPAL FLOOR.

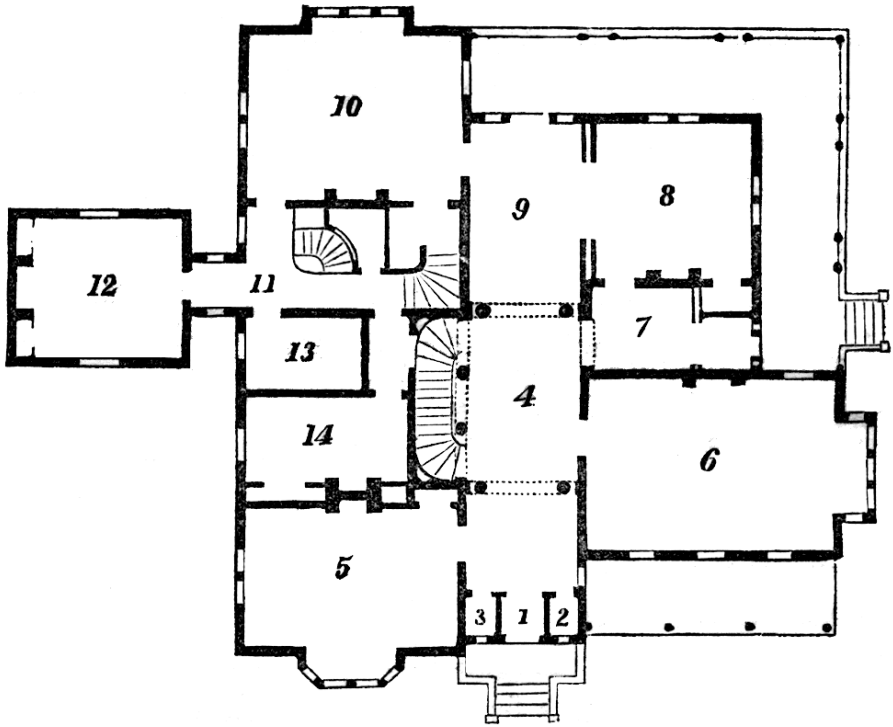


A VILLA MANSION. FRONTISPIECE.

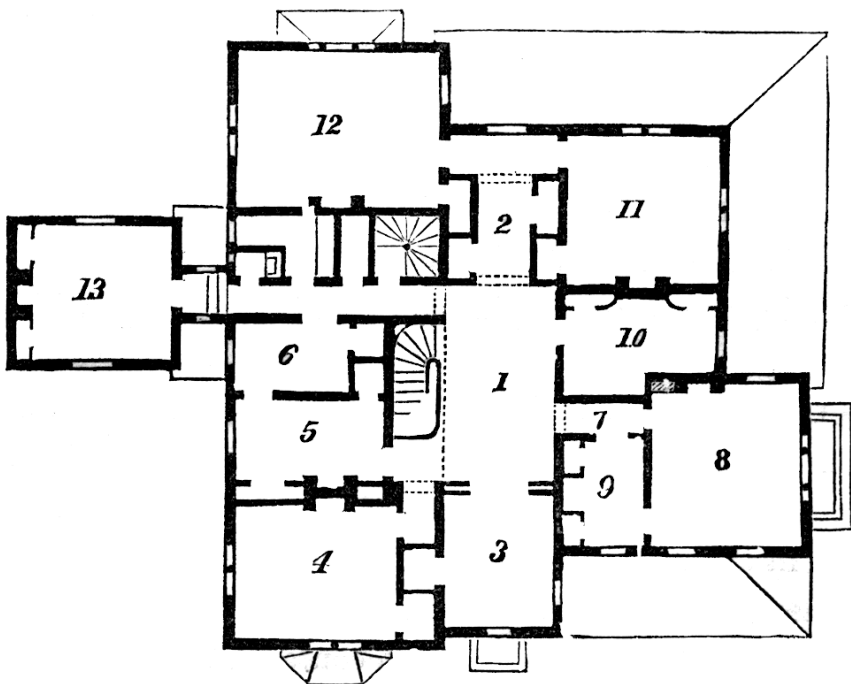
VILLA-MANSION IN THE ITALIAN STYLE

Plan of Principal Floor *PL. XXXVII*: This villa commands a most extensive view across Long Island Sound, and surrounding landscape. It was removed about two miles from the water, and at the same distance from the village. The reader who may chance to have occasion to travel to or from New York by the New Haven railroad, may at any time see this villa-mansion from such a point, as it stands upon an eminence that suddenly starts into view just after the train has passed the depot at Rye, and is upon the left-hand side of the road going eastward, being about midway between Rye and Portchester. The plan is as follows: Entrance vestibule, **No. 1**; hall closets, **Nos. 2** and **3**; main hall, **No. 4**; library, **No. 5**; drawing-room, **No. 6**; small salon, **No. 7**; parlor, **No. 8**; vestibule, **No. 9**; dining-room, **No. 10**; private hall, **No. 11**; summer-kitchen, **No. 12**; pantry and store-room, **No. 13**; sleeping-room, **No. 14**.

Plan of Chamber Floor *PL. XXXVIII*: Halls, **Nos. 1, 2** and **7**; Chambers, **Nos. 3, 4, 5, 8, 10, 11,** and **13**; dressing-rooms, **Nos. 6** and **9**; noble room, **No. 12**.



PL. XXXVII.—THE VILLA-MANSION—PLAN OF PRINCIPAL FLOOR.



PL. XXXVIII.—THE VILLA-MANSION—PLAN OF CHAMBER FLOOR.



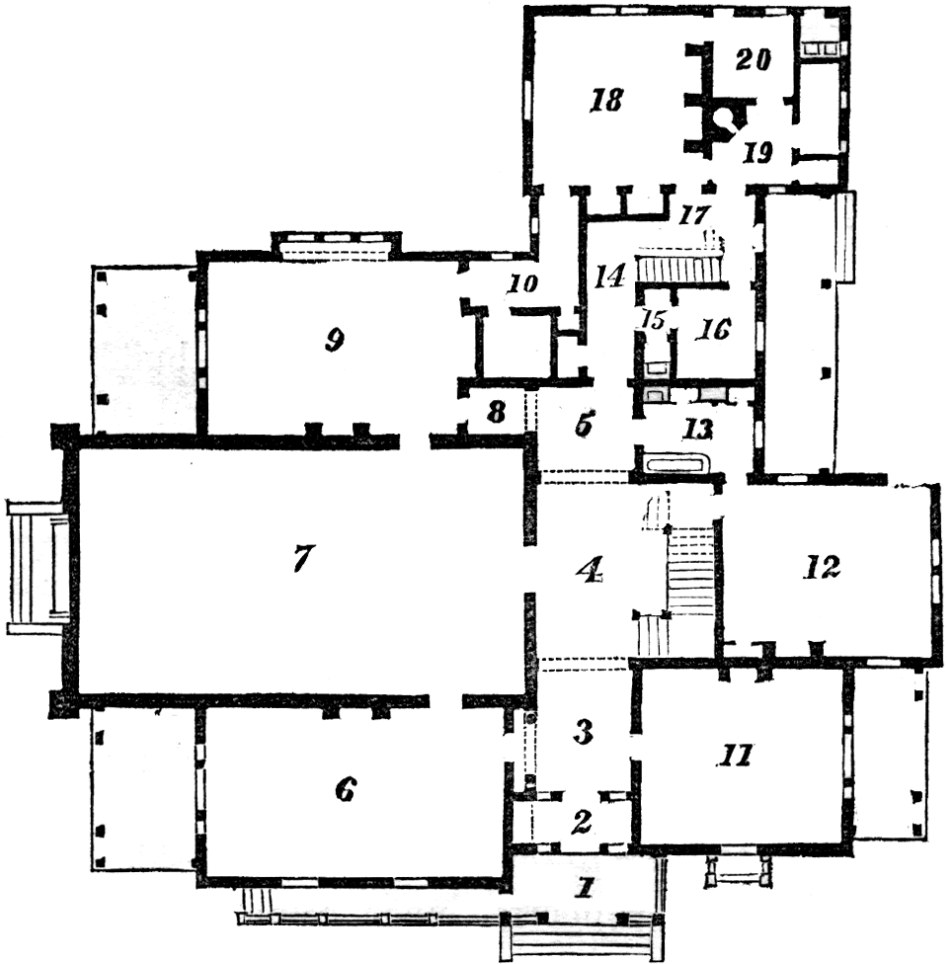
COUNTRY RESIDENCE

Plan of Principal Floor PL. XL: This building stands in a noble farm below the hills of Berkshire county, Massachusetts. The entrance porch, **No. 1**, is reach by a broad flight of marble steps leading onto a platform, which connects to a terrace that extends before the windows of the drawing-room, and is terminated at the end by steps to the ground. The outer door leads from this porch into a vestibule, **No. 2**; which leads into the entrance hall, **No. 3**; which is extended by an archway into the central hall, **No. 4**, 18' x 18'. Beyond this hall is a second vestibule, **No. 5** The drawing-room, **No. 6**, 31' x 19', leads into a picture gallery, **No. 7**. A single door open conducts into an entry, **No. 8**, open towards the vestibule at the end of the central hall, and giving access to the dining-room, **No. 9**, 25'6" x 18'. The butler's pantry and serving-room, **No. 10**, leads from the dining-room into the kitchen. In the rear of the library, **No. 11**, 21' x 19', is a sleeping-room, **No. 12**, 21'6" x 17" with a private dressing-room, **No. 13**, containing bathing tub, water-closet, and wash-stand, and every convenience in the way of closets, and fitted drawers and clothes-press. A passage, **No. 14**, has a door leading to a wa-

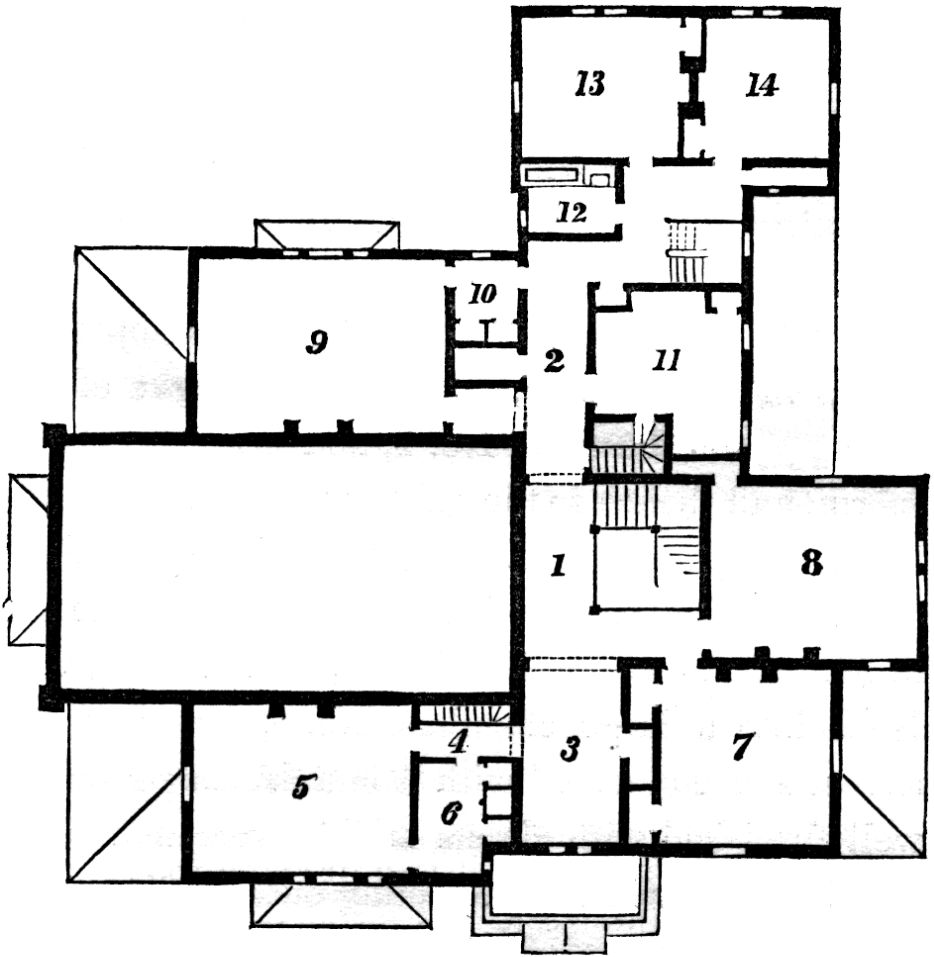
ter-closet, **No. 15**, and in the entry to it is a wash-stand. From this passage a door also leads into a small office, **No. 16**, or business-room, and from which a second door leads into a hall communicating with the gallery. **No. 17** is a staircase hall, and **No. 18** the kitchen, 19' x 19'. There is a room for baking, **No. 19**. Also in this portion of the house is a scullery or sink-room, **No. 20**.

Plan of Chamber Floor PI. LXI: The principal staircase lands upon the floor of a large hall, **No. 1**, the same size as that below. There is a rear passage, **No. 2**, and a front passage, **No. 3**, 10' wide, and an entry, **No. 4**, which leads to a chamber, **No. 5**, 24' x 19' connected to a dressing-room, **No. 6**, well-furnished with closets and drawers. Chamber **No. 9**, 25'6" x 18', is connected to a dressing-room, **No. 10**. Other chambers are **Nos. 7, 8, 11**, 15'6" x 14'; bathing-room and water-closet is **No. 12**, and two more chambers at **Nos. 13 and 14**.

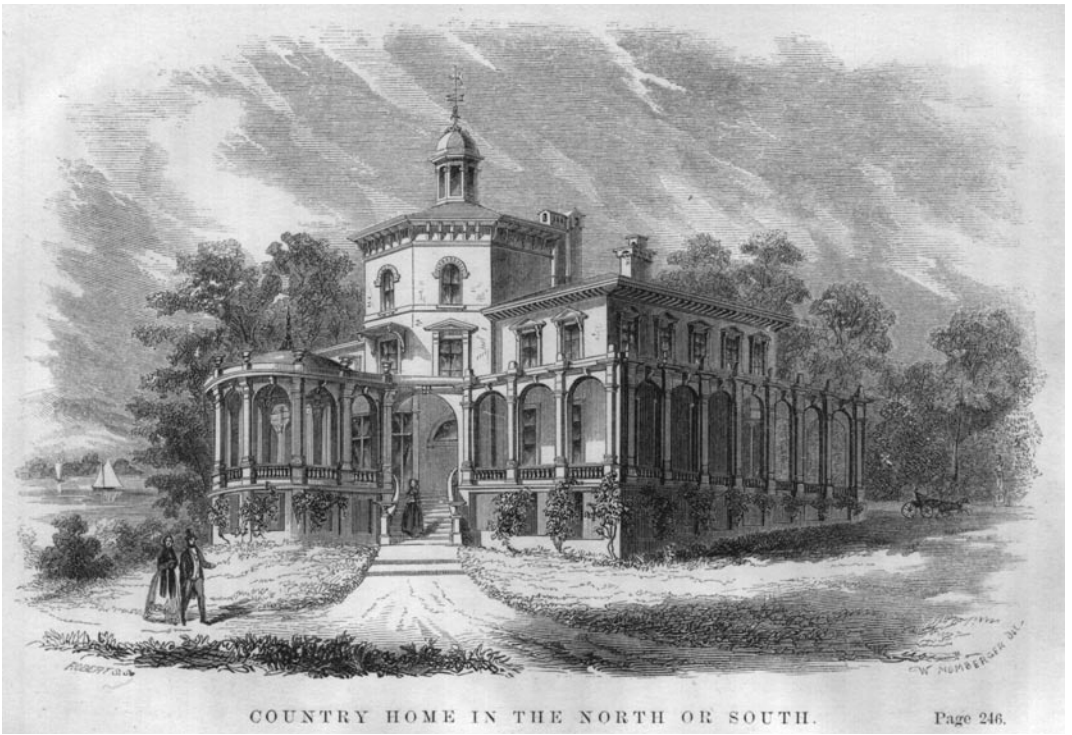
Upon the floor above are three large bed-rooms immediately over **Nos. 11, 13, and 14**, and one of smaller size above the bathing-room, **No. 12**. A passage also leads to the landing before spoken of, that contains the landing overhanging in the tower, and, above the chamber and dressing-room, over the dining-room, is a very large room appropriated as a drying-place for clothes. It will be noticed that the picture-gallery extends the height of two stories, and the observer will remark that, if wished, a small gallery could be supported upon brackets, the floor of it being level with that of the hall of the second story, from the centre of which a door could be made to lead, so that the view of the picture-room could be enjoyed at times from above.



PL. XL.—COUNTRY MANSION—PRINCIPAL FLOOR.



PL. XLI.—COUNTRY MANSION—CHAMBER FLOOR.



COUNTRY HOME IN THE NORTH OR SOUTH.

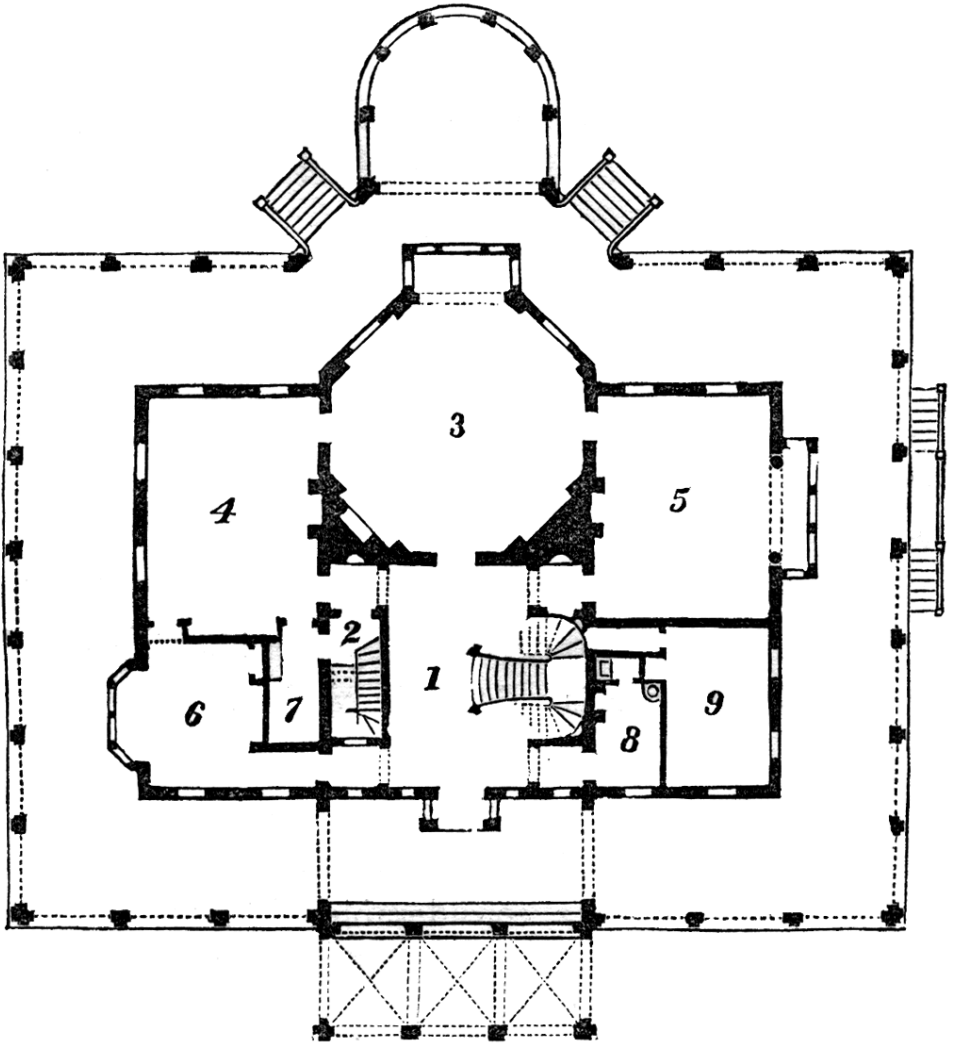
COUNTRY HOME, NORTH OR SOUTH

The summer residence of a wealthy family, in the Northern States, has many features in common with the large home in the South. The same equal arrangement of spacious external colonnades or verandas, and frequently a separation of the domestic offices from the main building. This fine old remodeled family homestead on the Hudson was originally a French-Italian-style chateaux, original plans said to be by Brunel.

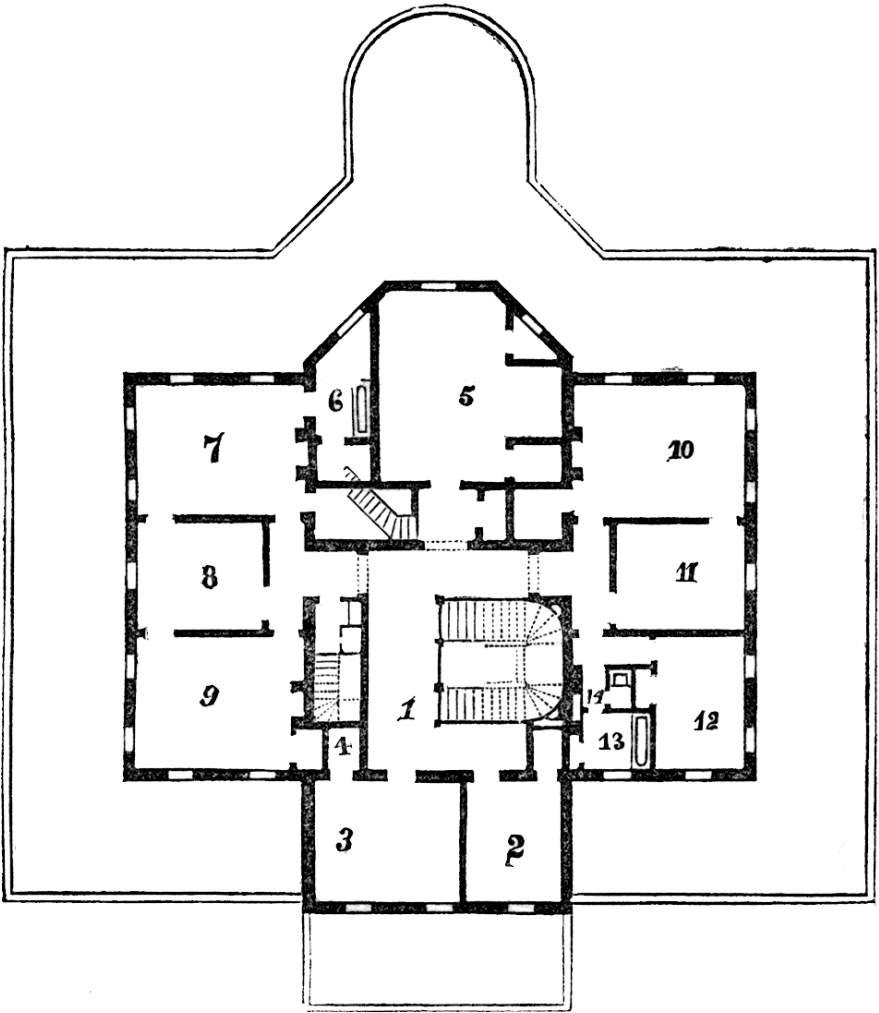
Plan of Principal Floor *Pl. XLIII*: Main hall, **No. 1**, 20' x 24'; **No. 2** is an inclosure, containing the private stairway to the kitchens, below, and to the chambers over. Leading from the centre of the main hall, is a large octagon room, **No. 3**, 26'6" across, fitted up as a library. Passing from the library, upon one side is a dining-room, **No. 4**; and upon the other a drawing-room, **No. 5**, both rooms are 26' x 20'. Returning to the front entrance: a passageway leads upon one side to a small morning-room, **No. 6**, passing a waiter's pantry, **No. 7**, and upon the other side, a shorter entry conducts to

a gentleman's dressing-room, **No. 8**, with all the requisite water arrangements, a most convenient and desirable feature upon the principal floor of all first-class houses in the country. Beyond this, and entered by means of a private passage leading from under the stairway, is a sleeping-room, **No. 9**, with a closet. Entirely surrounding the building is a wide veranda.

Plan of Chamber Floor *Pl. XLIV*: The principal staircase ascends by two flights to a large central hall, lighted by a dome constructed in the attic flooring, and illuminated by glass in the roof immediately over it. This hall, **No. 1**, is nearly square, and from it arches lead into small vestibules, connecting with the different rooms. Immediately in front are doors leading into two chambers, **No. 2** and **No. 3**. A closet, **No. 4**, is attached to room **2**, and corresponds with an opening upon the other side of the hall leading to a vestibule. The space above the library is divided into a large bed-room, **No. 5**, with an alcove for the bed. There is a dressing-room, **No. 6**, with bathing-room attached, for the use of the chamber, **No. 7**, and from which a door opens into a large closet partly under the lower stairs. Next to this is a smaller sleeping-room, **No. 8**, and in front one of the same size as **No. 7**, marked upon the plan **No. 9**, and provided with a large closet near the outside wall and a smaller one the other side the fireplace. The private staircase is continued to the attic above, and has space in its inclosure for a housemaid's closet and a sink. The other side of the building is occupied by a large room, **No. 10**, one of smaller size, **No. 11**, and a chamber in the corner of the building, **No. 12**. There is also a bathing-room, **No. 13**, and in the entry leading thereto, a water-closet, **No. 14**.



PL. XLIII.—SUMMER RESIDENCE OF THE NORTH, OR MANSION OF THE SOUTH—PLAN OF PRINCIPAL FLOOR.



PL. XLIV.—SUMMER RESIDENCE IN THE NORTH, OR SOUTHERN MANSION
CHAMBER PLAN.



SOUTHERN MANSION.

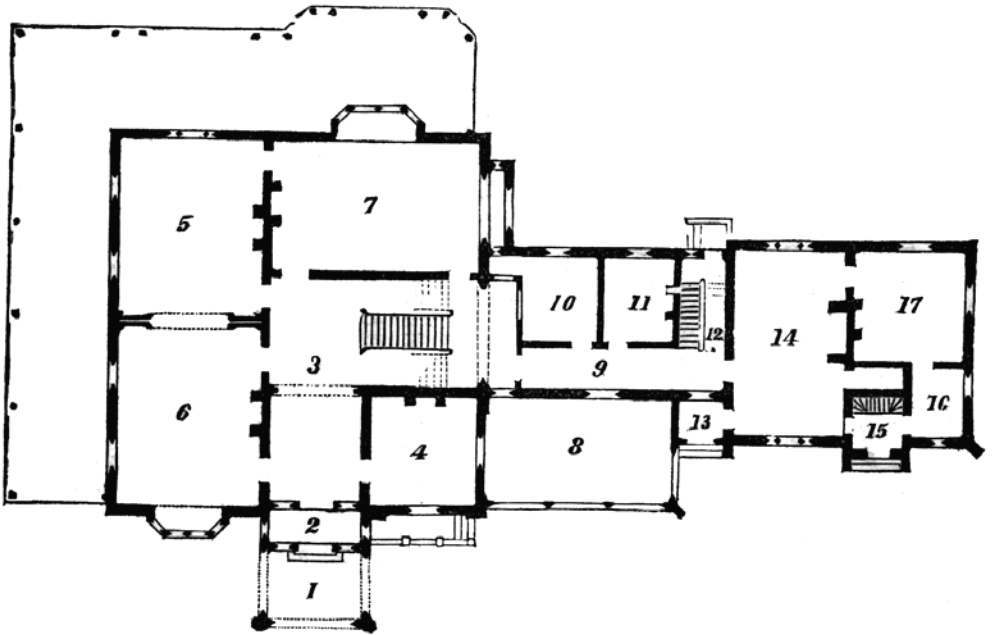
Page 258.

SOUTHERN MANSION

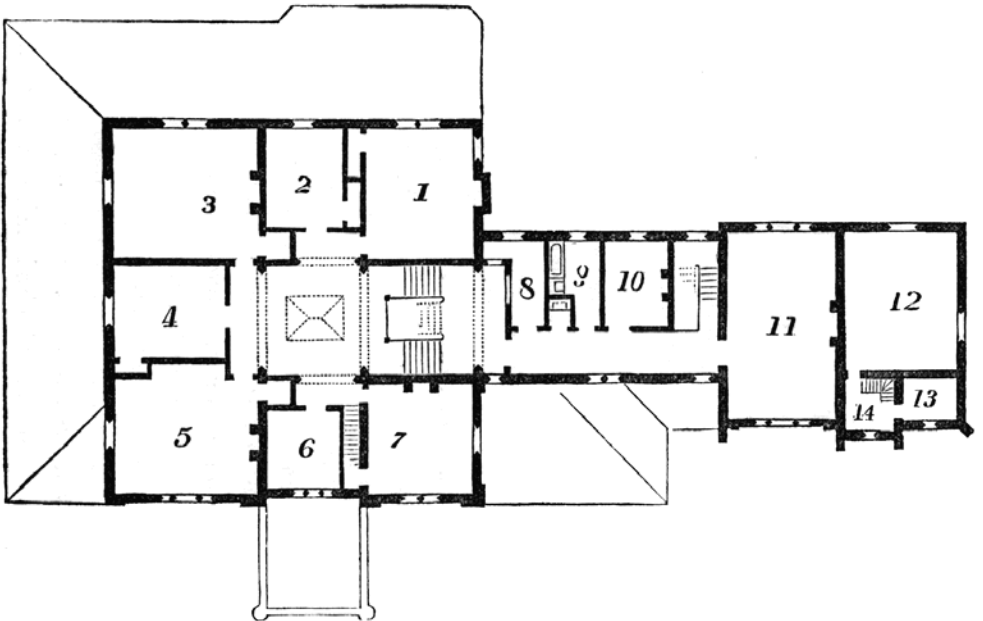
Plan of Principal Floor *Pl. XLVI*: The principal entrance is under a carriage-porch, **No. 1**, under which a vehicle can drive, and from which wide doors lead into a vestibule, **No. 2**, 14' x 6'. The principal hall, **No. 3**, is 14' x 16'. Upon entering the house, the first room is the library, **No. 4**, 16' x 16', and forming the lower story of a tower. Two drawing-rooms **No. 5** and **No. 6**, each 27' x 22', communicate by sliding doors. The dining-room **No. 7** is 30' x 20'. **No. 8**; is the ombra attached to the library and **No. 9**, the passage leading from the staircase hall to the domestic offices. **No. 10**, 11' x 13', is a room for the waiter's use; and next to this is a store-room, **No. 11**, also 11' x 13'. Beyond this is a hall, **No. 12**. A porch, **No. 13**, conducts to the rooms more especially devoted to the use of the servants: a large kitchen, **No. 14**, 17' x 26', connected with it a hall, **No. 15**, containing a servants' staircase to cellar and to servants' sleeping-rooms above, and being the base of a small tower; next to this a scullery, **No. 16**, and a large laundry, **No. 17**.

Plan of Chamber Floor *Pl. XLVII*: Chambers include **No. 1**, 18'x20'; **No. 2**, 16'x12'; **No. 3**, 22'x20'; **No. 4**, 17' x 13'; **No. 5**, 22'x20'; **No. 6**, 11'x11'; **No. 7**, 11'x11'; **No. 10**, 11'x13'. A linen-closet, **No. 8**; is next to a bathing-room, **No. 9**, with a water-closet. A separate stairway is provided in the small tow-

er that leads to sleeping-rooms for the domestics and consist of Nos. 12, 13, 14, the tower being carried again above this floor, and leading to a further space for sleeping accommodation, if necessary.



Pl. XLVI.—SOUTHERN MANSION—PRINCIPAL FLOOR.

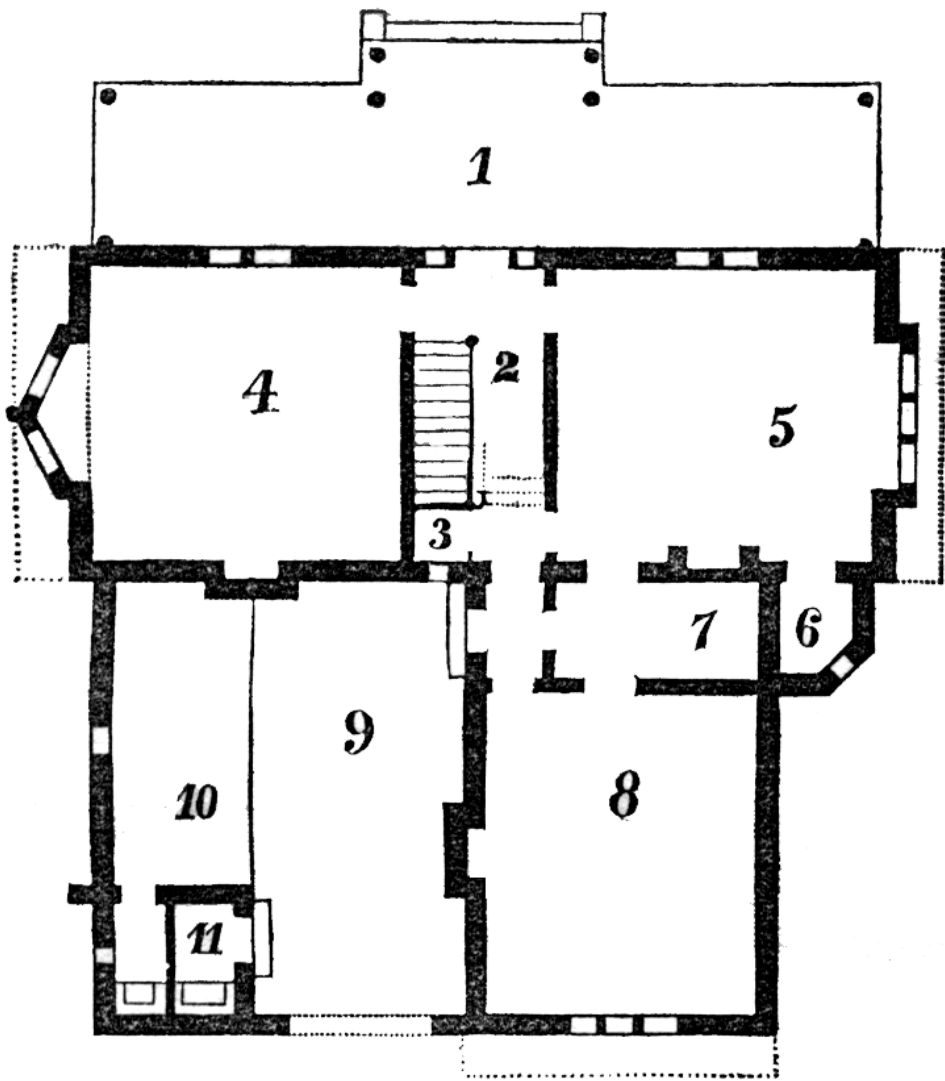


Pl. XLVII.—SOUTHERN MANSION—CHAMBER FLOOR.

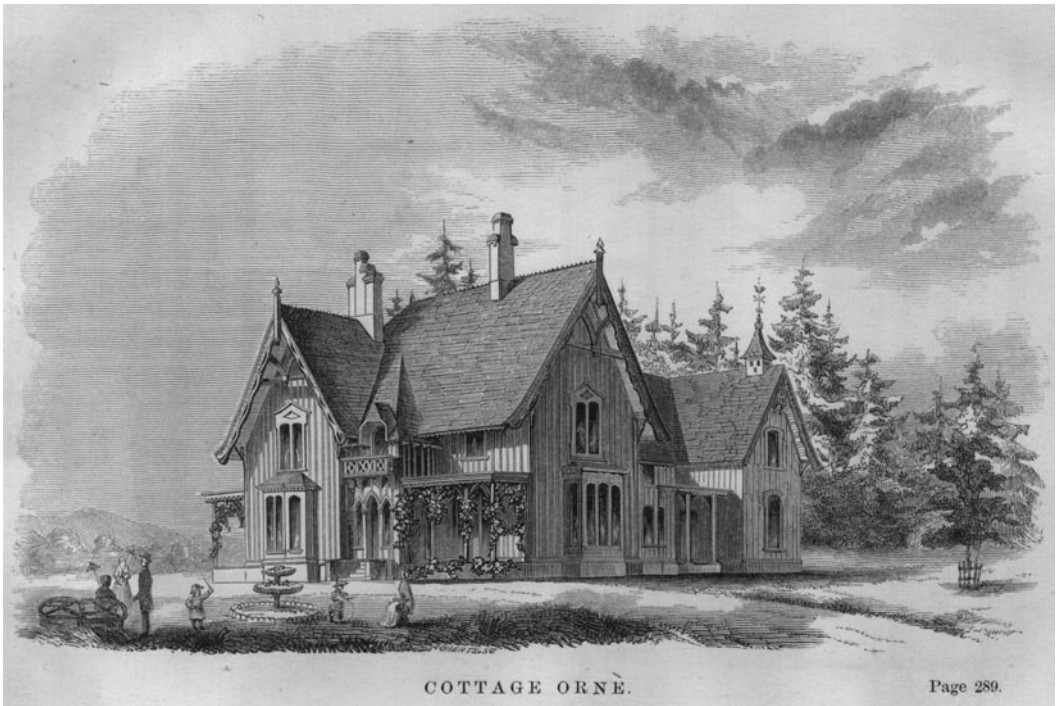


SUMMER COTTAGE

Plan of Principal Floor *PL. XLIX:* The building in front is shaded by a rustic veranda, **No. 1**, and from it a door leads into the entrance hall, **No. 2**, 6'6' wide. At the end of this an entry is partitioned off--in which is a door leading to the kitchen &c., and a closet for guns, fishing-poles &c., is provided, **No. 3**. Upon one side of the hall is a pleasant sitting-room, **No. 4**, 15' x 16'. Upon the other side is a dining-room, **No. 5**, 15' x 16'; communicating with this room upon one side is a private store-room, **No. 6**, about 6' x 6', and upon the other a door leads to a large pantry, **No. 7**, filled with every convenience and connecting with the kitchen, **No. 8**; 30' x 20'. The yard, **No. 9**, is inclosed within a stone wall, with a wide opening towards the road, closed at will by a rustic gate; and in this yard, entirely screened from sight, and conveniently situated for access from the house, is a wood-shed, **No. 10**, and a necessary, divided into two apartments, **No. 11**, This latter building is carried up as a dwarf tower, and its upper portion is intended for a pigeon-house.



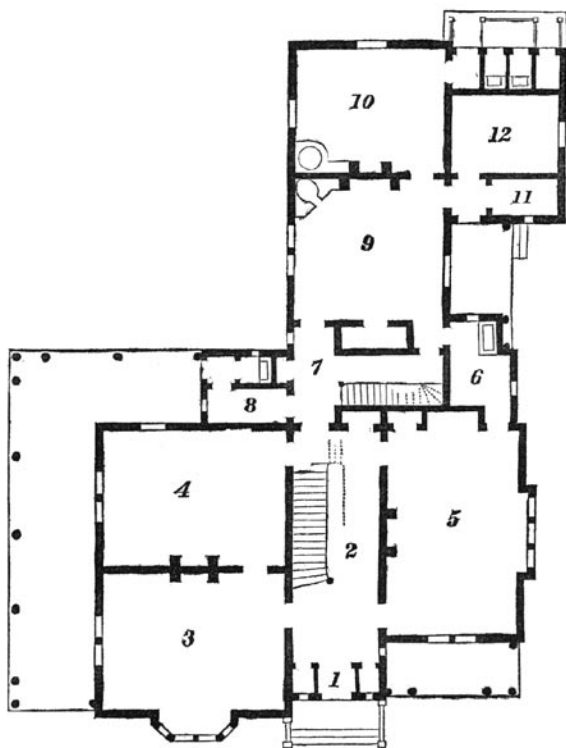
PL. XLIX.—SUMMER COTTAGE—PRINCIPAL FLOOR.



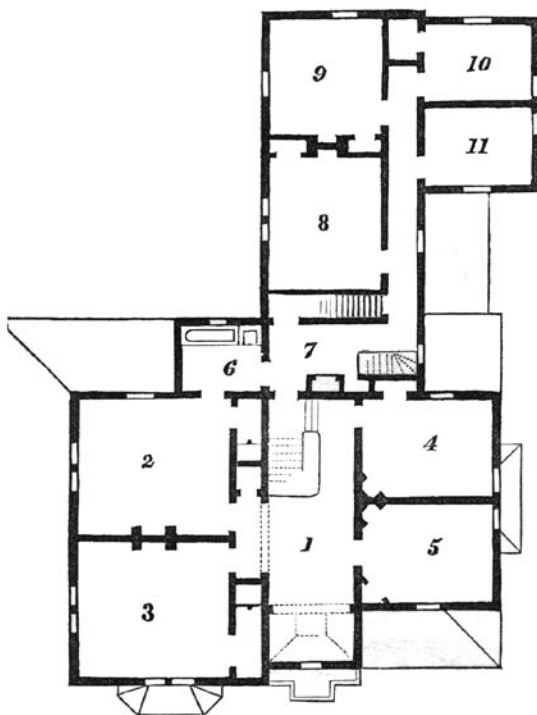
COTTAGE ORNÉE

Plan of Principal Floor PL. LI: The vestibule, **No. 1**, on either side which are hall closets with sash doors towards the inner hall, **No. 2**, 10' x 28'. Connecting with it upon one side is a drawing-room, **No. 3**, 22' x 16'. In the rear of this is the library, **No. 4**, 22' x 16'. At the end of the principal hall a sash door leads into an entry, **No. 7**, with a closet and from it a door leads into a dressing-room, **No. 8**. The dining-room, **No. 5**, 22' x 16', has attached a pantry or waiters'-room, **No. 6**, with a sink, and a door connecting with the kitchen, **No. 9** with an old-fashioned brick oven. The fireplace is suitable for a Metropolitan range, and roaster. In the rear of the kitchen is the laundry, **No. 10**. Two water-closets, and a tool-house, are inclosed within this portion of the building. The remaining portions of the plan are **No. 11**, a larder, and **No. 12**, a small wood-house for the storage of fuel for immediate use.

Plan of Chamber Floor PL. LII: The chamber plan shows a large hall, **No. 1**. Chambers include **Nos. 2, 3, 4, 5, 8, 9, 10**, and **No. 11**. The wing building contains a bathing-room, **No. 6**. The entry, **No. 7**, has in it a housemaids' closet and sink, and under the stairs which lead to the space in the roof above the ceilings, in the principal body of the house, is a large linen closet.



PL. LI.—COTTAGE ORNÉE—PRINCIPAL FLOOR.

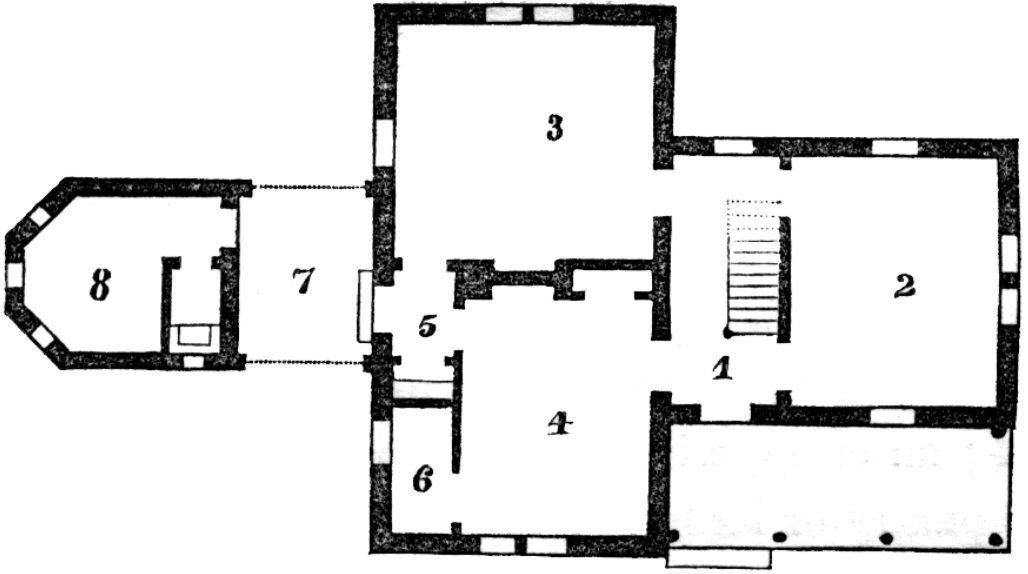


PL. LII.—COTTAGE ORNÉE—CHAMBER FLOOR.

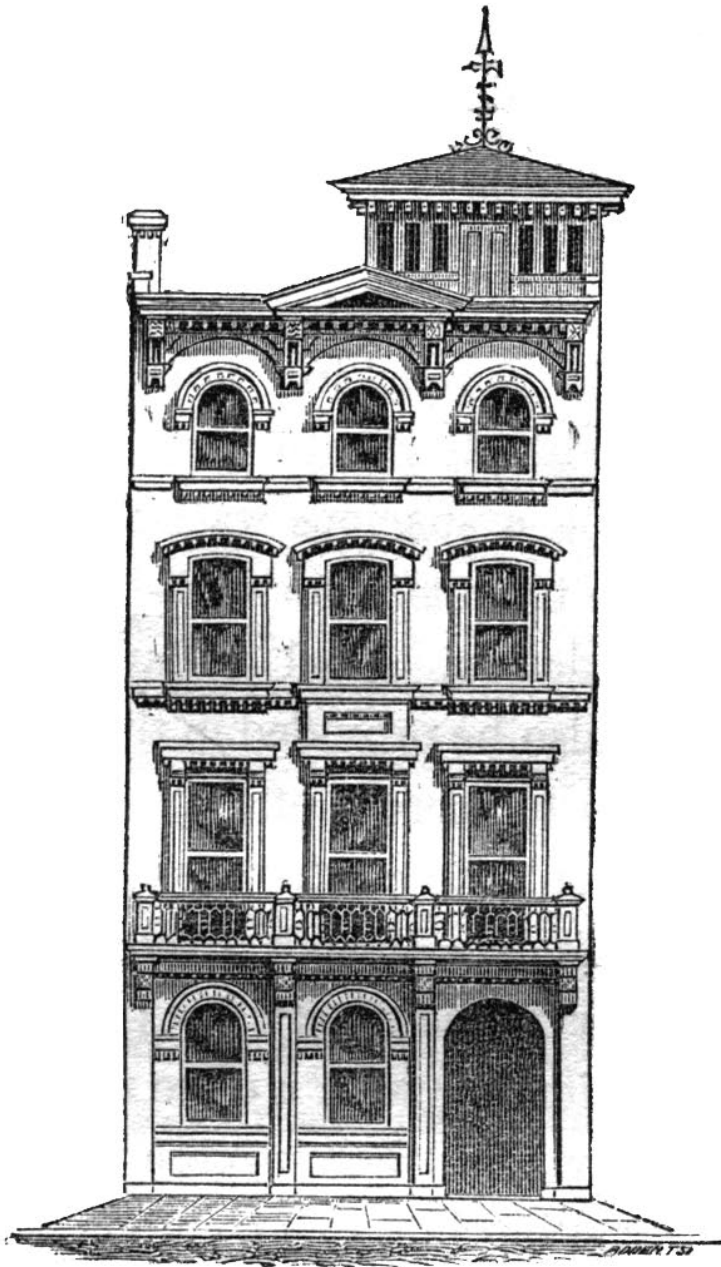


GATE-HOUSE

Plan of Principal Floor *PL. LIV:* Estates, farm-like or wild, of such extent as to place the house at considerable distance from the public road, require some cottage or farm-habitation, near to the road. The outline of the main building is somewhat that of the letter T, and connected with it is a low inclosure, roofed over and containing the adjuncts that convenience requires near the house. The entrance is under a rustic porch or veranda, of which the supporting posts may be of timber from the forests, with the bark remaining thereon. From this the entrance-door opens into a hall, **No. 1**, 6' wide. Upon one side of this hall is the best sitting-room, **No. 2**, 15' x 15'. Upon the other side of the hall is a living-room, or bed-room, as the family may prefer, **No. 3**; a kitchen, **No. 4**, 10'6" x 15'; an entry, with sink therein, **No. 5**; and a large store pantry or larder, **No. 6**. These rooms, including the living-room, comprise the main body of the building, and from the entry, **5**, a rear door connects with an open space, **No. 7**, screened by a lattice door and fence on either side, and covered with a roof above. In a line with this the out-building is continued, affording accommodation for a wood-shed, **No. 8**, and with it a necessary. There are three sleeping-rooms upstairs.



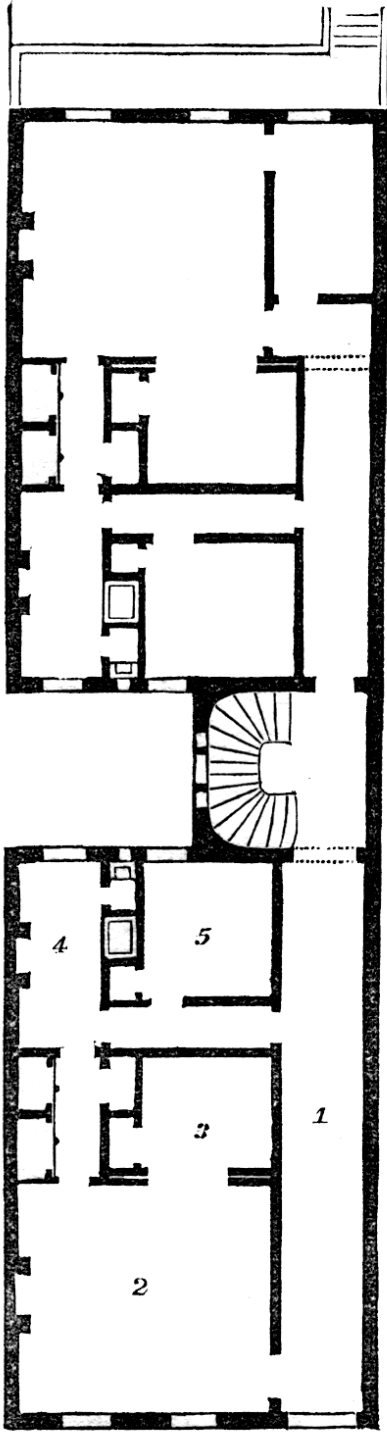
PL. LIV.—GATE-LODGE PLAN.



PL. LVIII.—TENEMENT HOUSE—STREET ELEVATION.

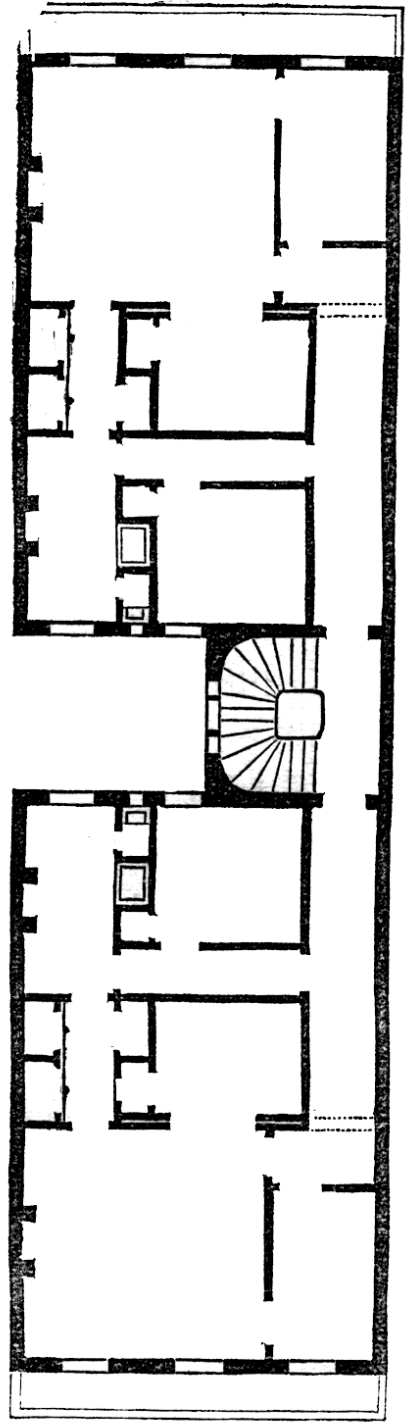
TENEMENT HOUSE

Plan of Principal Floor PL. LIV: The building occupies the entire block of a city lot, 25' x 100'. Entrance, No. 1, 6' wide, parlor, No. 2, 17' x 15'; chamber, No. 3, 8' x 10'; kitchen, No. 4, Sleeping-room, No. 5, 10' x 9'.

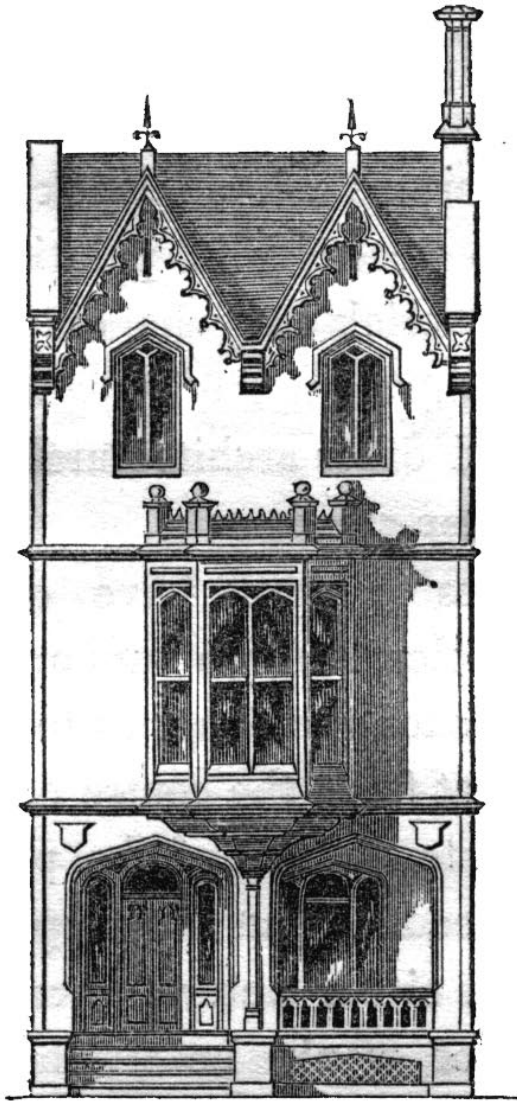


PL. LVI.
FIRST FLOOR.

TENEMENT HOUSE.



PL. LVII.
SECOND FLOOR.

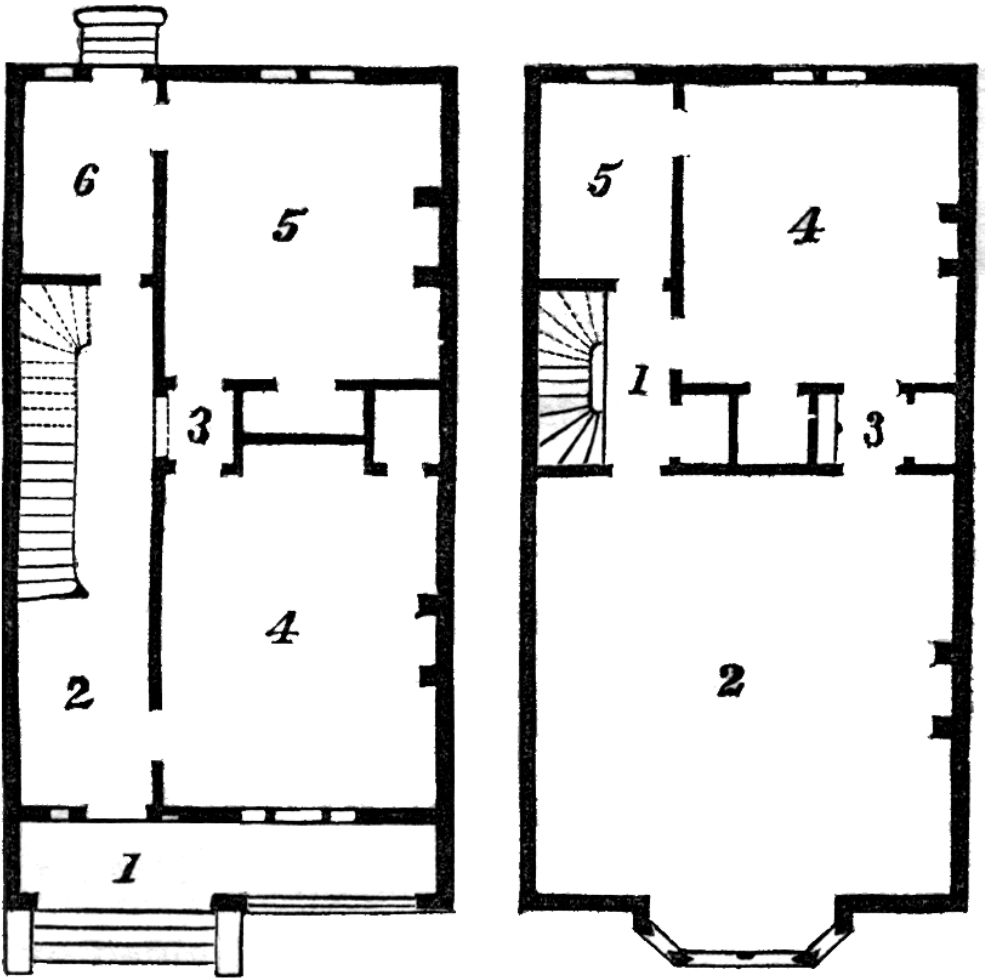


PL. LX.—HOUSE IN A ROW—ELEVATION.

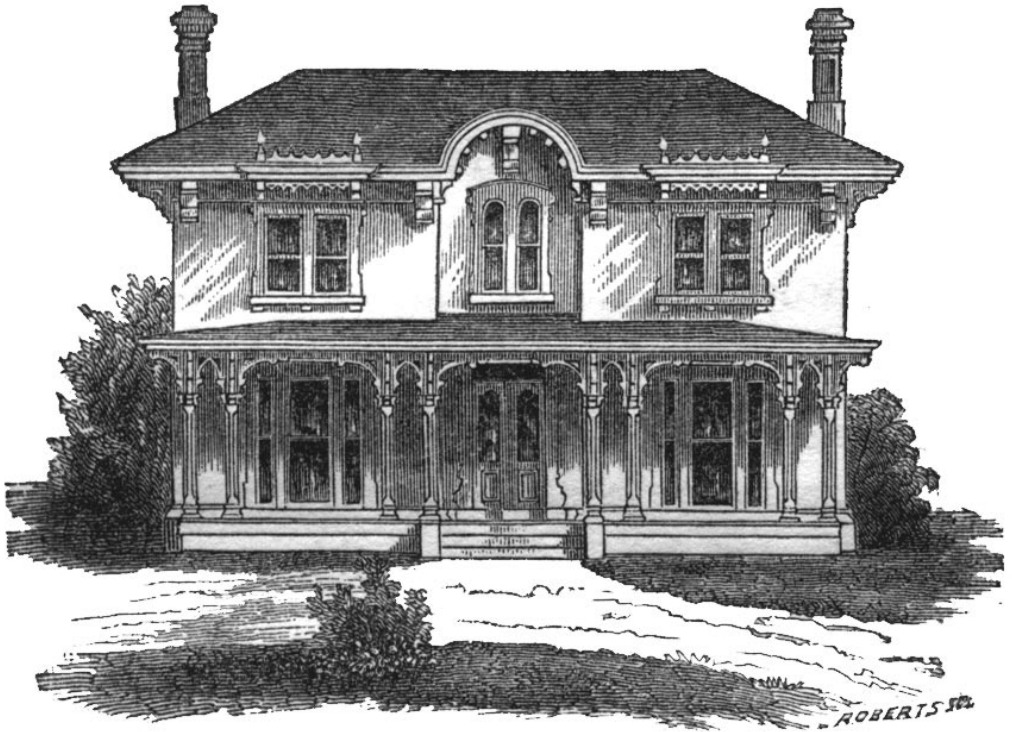
HOUSE IN A ROW

Plan of Principal Floor *Pl. LIX, left:* The house occupies a lot 25' wide. Terrace, **No. 1**; entrance hall, **No. 2**, 7' wide, leading into a vestibule, **No. 3**, in which are doors into the dining-room, **No. 4**, 20' x 16'6"; and kitchen, **No. 5**, 16'6" x 16'6" next to it a scullery and larder, **No. 6**.

Plan of Second Floor *Pl. LIX, right:* The staircase hall is **No. 1**; the parlor, **No. 2**, has an entry, **No. 3**, which leads into a sleeping-room, **No. 4**, and next to it a smaller bedroom, **No. 5**.



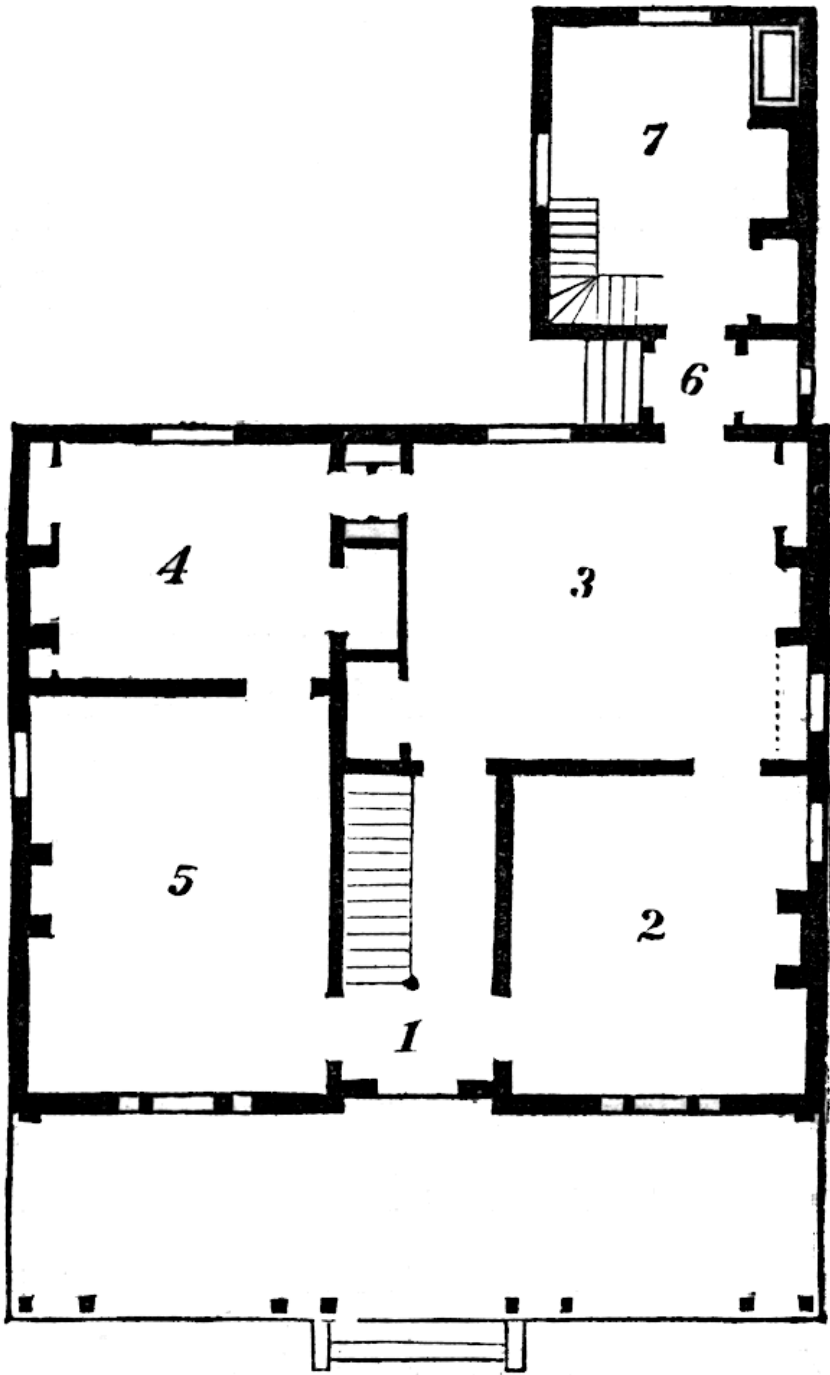
PL. LIX.—HOUSE IN A ROW—FIRST AND SECOND FLOOR.



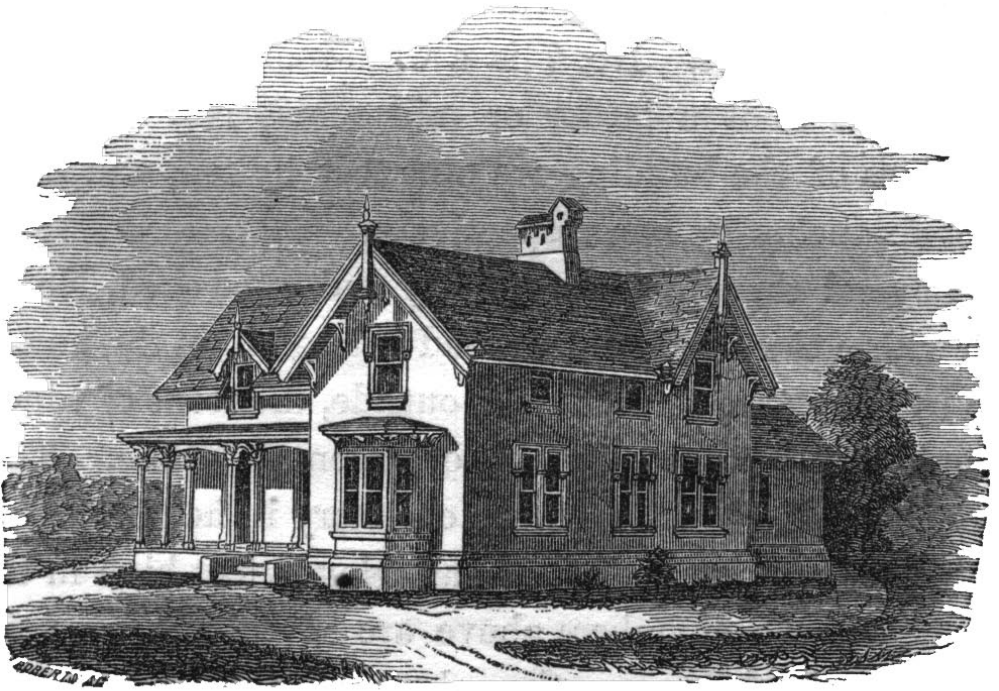
PL. LXII.—SQUARE COTTAGE—ELEVATION.

SQUARE COTTAGE

Plan of Principal Floor PL. LXI: The building is 38' x 32', with a wing of one or more stories, 20' x 13'. A wide veranda stretches across the front, and in the centre is the entrance hall, **No. 1**. Upon one side is a sitting-room, **No. 2**, 15' x 15'; and in its rear a dining-room, **No. 3**, 15' x 19', with a china closet at one end, and corresponding to it an entry with drawers and wardrobe, leading to a bedroom, **No. 4**, 15' x 10'. The parlor, **No. 5**, is 15' x 20'. The wing contains a back entry, **No. 6**, with outer door and store closet, and next to this a kitchen, **No. 7**.



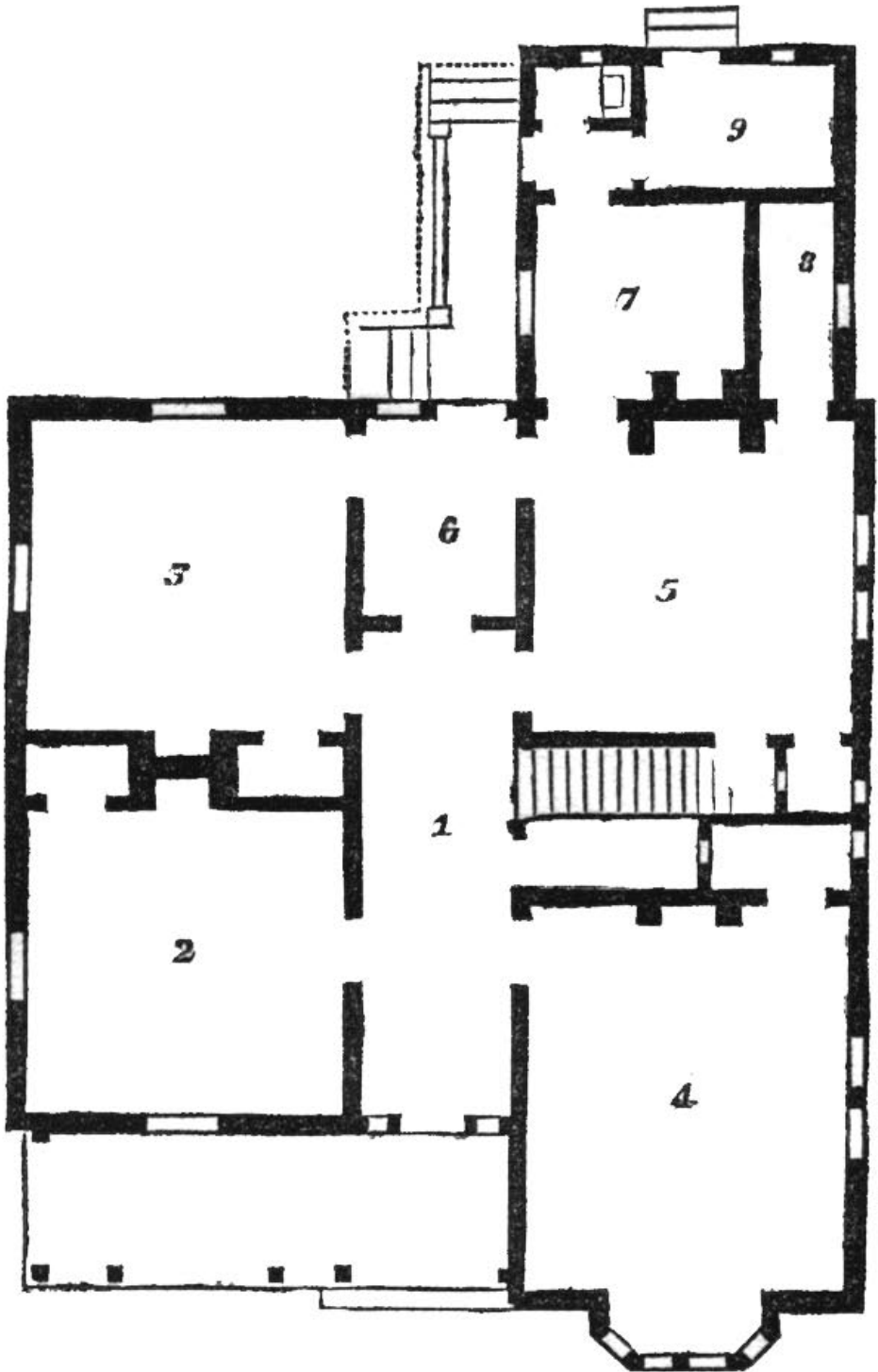
PL. LXI.—SQUARE COTTAGE—PLAN.



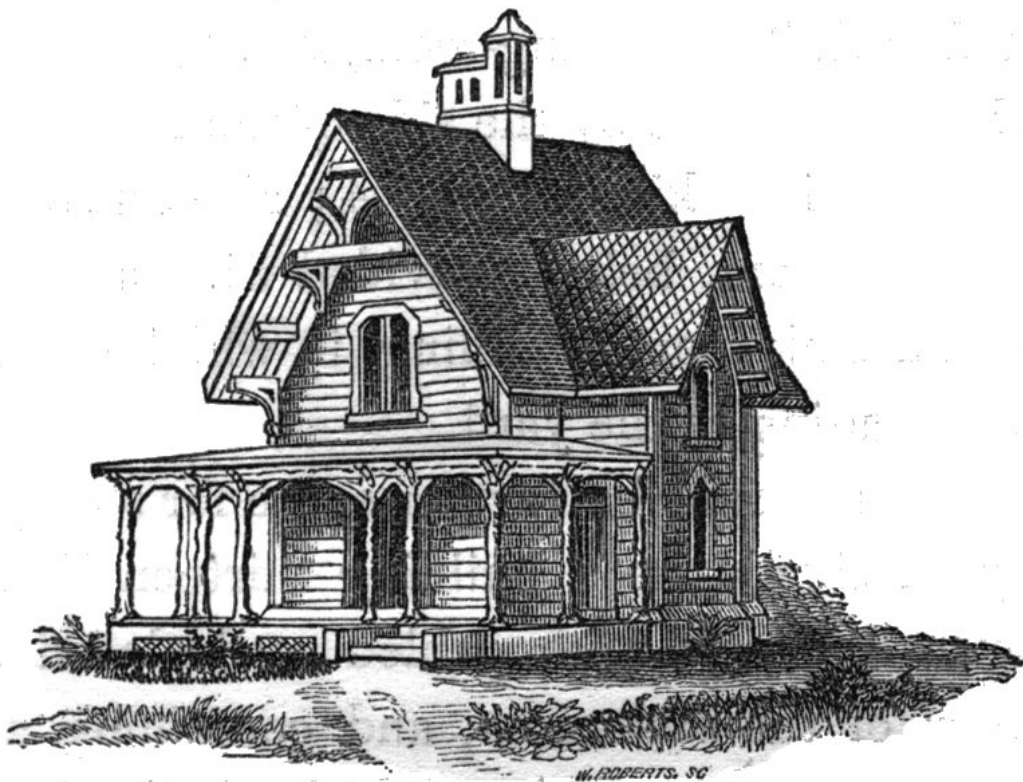
PL. LXIV.—GOTHIC PARSONAGE—EXTERNAL VIEW.

GOTHIC PARSONAGE

Plan of Principal Floor PL. LXIII: The building is a design in the Tudor period of the Gothic style, intended for a residence of a clergyman in Massachusetts. The study, **No. 2**, 15' square, has a window opening to the veranda, and entrance porch to the hall, **No. 1**, 6' wide. In the rear is a dining-room, **No. 3**, also 15' square. The drawing-room or parlor, **No. 4**, is 15' x 18', the kitchen, **No. 5**, 15' square, connected to a pantry, **No. 6**. The scullery and wash-room is **No. 7**, 9' x 10', and next to it a larder or milk-room, **No. 8**, 3'6" x 10'. Beyond these are a necessary and wood-shed, **No. 9**.



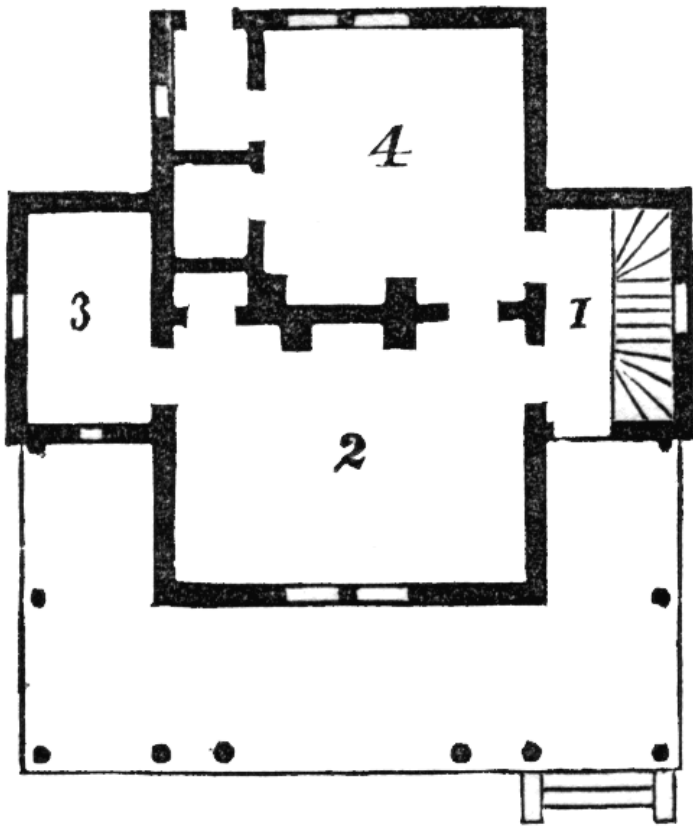
PL. LXIII.—GOTHIC PARSONAGE—PLAN.



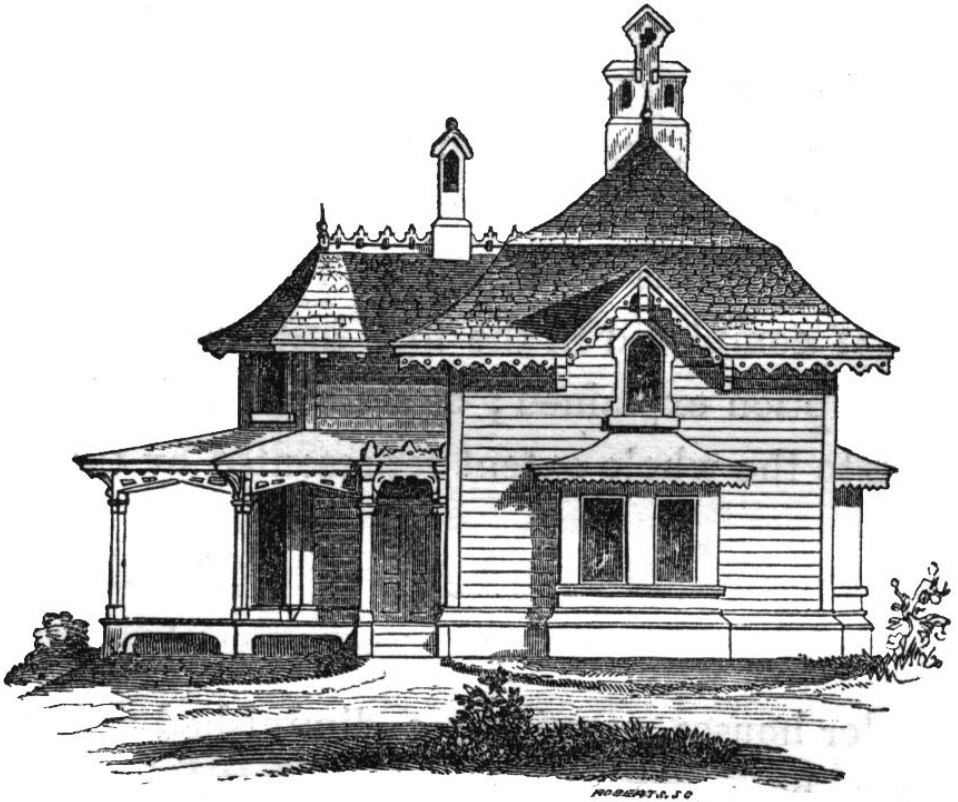
PL. LXVI.—ENGLISH RUSTIC COTTAGE—EXTERIOR.

ENGLISH RUSTIC COTTAGE

Plan of Principal Floor PL. LXV: A door leads from the hall, **No. 1**, 7' x 10'; into a pleasant sitting-room, **No. 2**, 15' x 12', and has connected to it a sleeping-room, **No. 3**, 7' x 10', and a large closet by the side of the fireplace. In the rear is a kitchen, **No. 4**; also serving as the family living-room, being provided with a large store closet and a sink room adjoining, in which should be a back door leading to the yard.



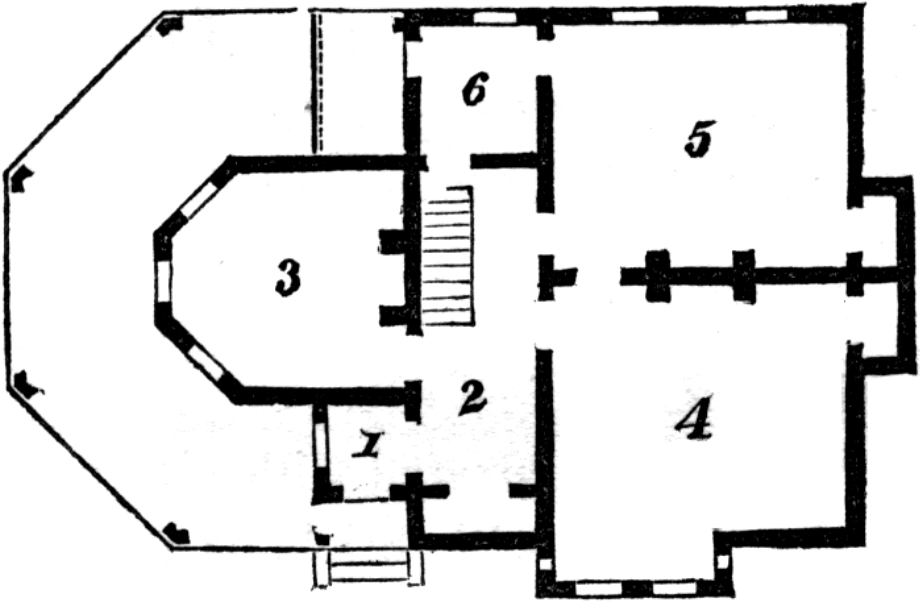
PL. LXV.—ENGLISH RUSTIC COTTAGE—PLAN.



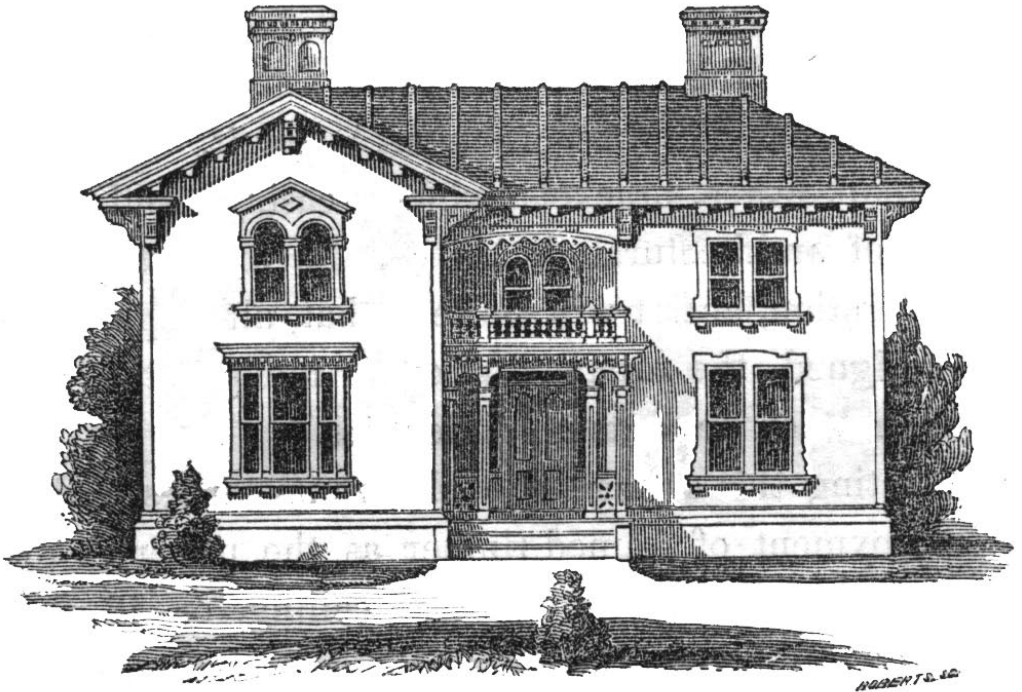
PL. LXVIII.—SWISS COTTAGE—EXTERIOR.

SWISS COTTAGE

Plan of Principal Floor PL. LXVII: This cottage is designed to be erected in two phases. In the first place the plan only consist of those portions included in the space marked by the figures 2, 4, 5, and 6; being 22' x 26'; those having the numerals 1 and 3, and the veranda inclosing them, being left for after-erection. In the first place this would comprise all that family-convenience in living would require, the building is not to be considered complete, until the remaining portion has been added. Upon the veranda is an entrance porch, **No. 1**, the inner door in which, is what would be the external door of the first completed portion of the building. The entrance hall, **No. 2**, is 6' wide, and upon one side is a pretty parlor, **No. 3**, 12' x 15', with its end truncated and a veranda surrounding it on all sides. Upon the other side of the hall is the dining or family sitting-room, **No. 4**; about 12' x 14'6", attached to a projection at the side containing a store-closet, and in connection with it is one for the use of the kitchen, **No. 5**, 12' x 14'6". Next to the kitchen is a sink-room, **No. 6**, communicating with the yard.



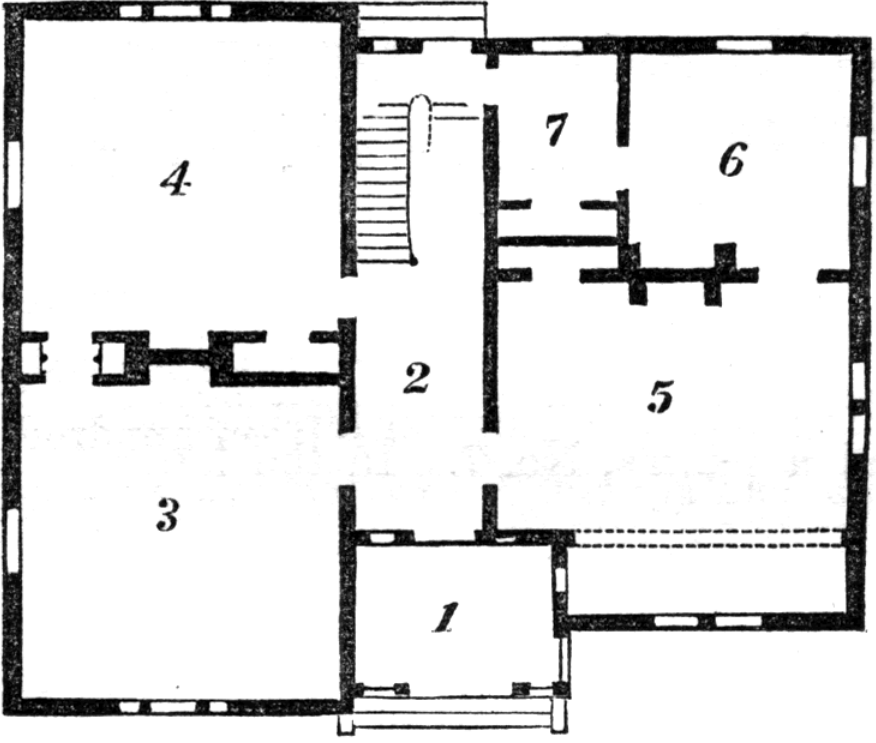
PL. LXVII.—SWISS COTTAGE—PLAN.



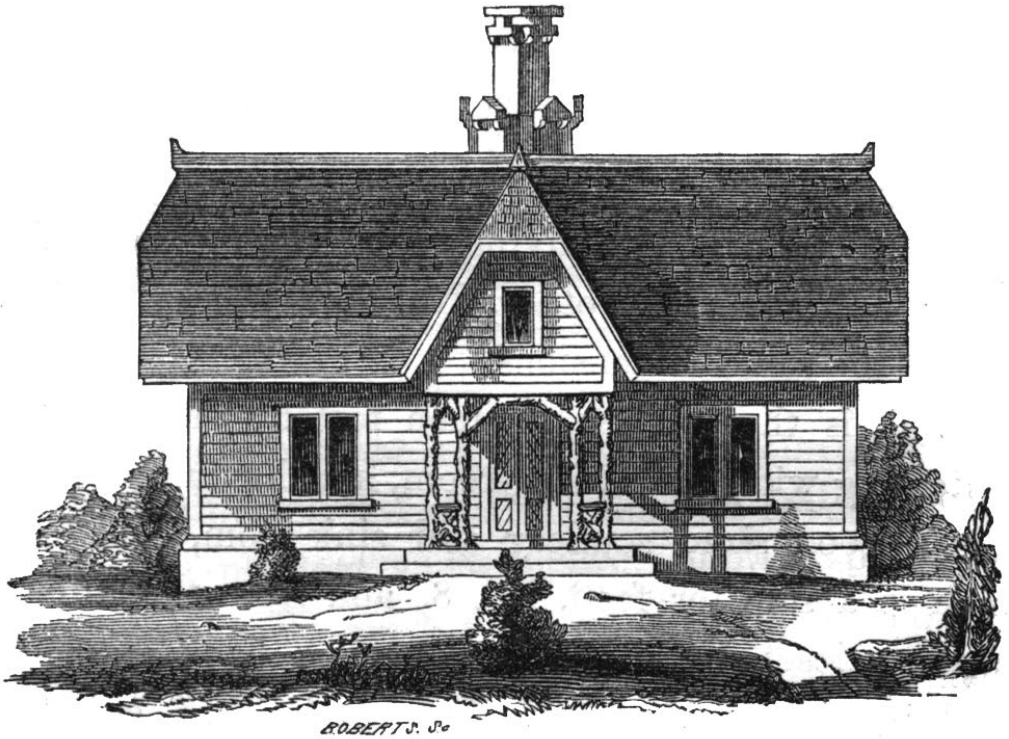
PL. LXX.—ITALIAN COTTAGE—ELEVATION.

ITALIAN COTTAGE

Plan of Principal Floor PL. LXIX: This plan has in front a large porch, **No. 1**, 10' x 6', and is intended, to a certain extent, to supply the want of a veranda and afford a pleasant place for enjoying the air and view out-doors. Within this is the hall, **No. 2**, is 6' wide, and upon one side is a pretty parlor, **No. 3**, 14' x 14'; and in the rear of this, connected by an entry between the two rooms, with drawers upon each side, is a bedroom, **No. 4**, should the family not need this room as a sleeping-chamber, it could be used as a family sitting-room, or a study. The other portion of the house contains a large family living-room, **No. 5**, which, with the exception of the corner, taken out by the recess shown upon the plan, is 16' x 16'. In this is a fireplace and closet, and adjoining it are a summer-kitchen, or sink-room, **No. 6**, and a pantry, **No. 7**.



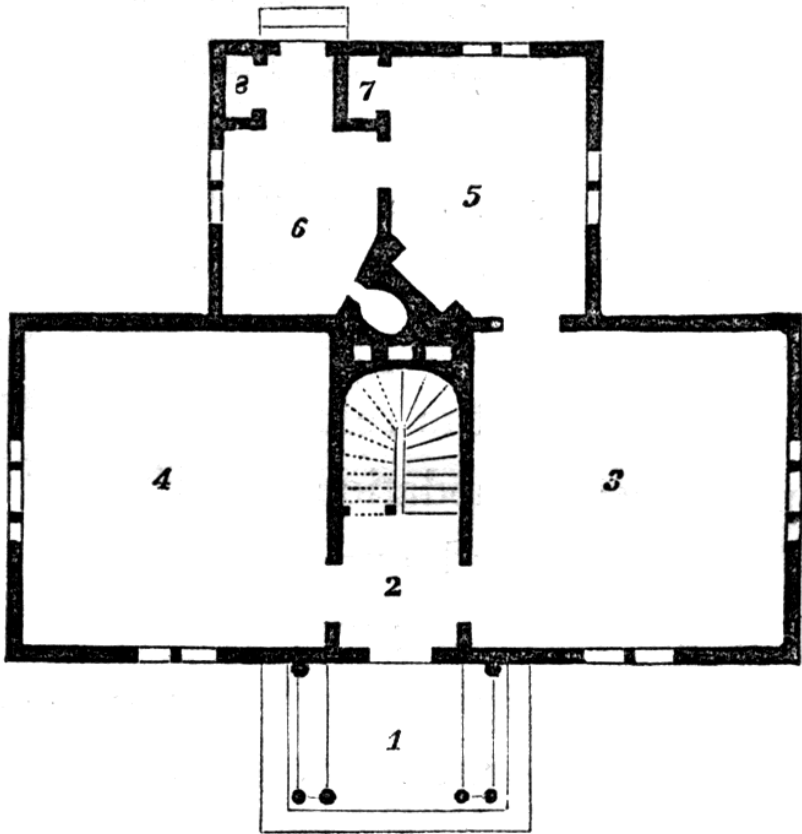
PL. LXIX.—ITALIAN COTTAGE—PLAN.



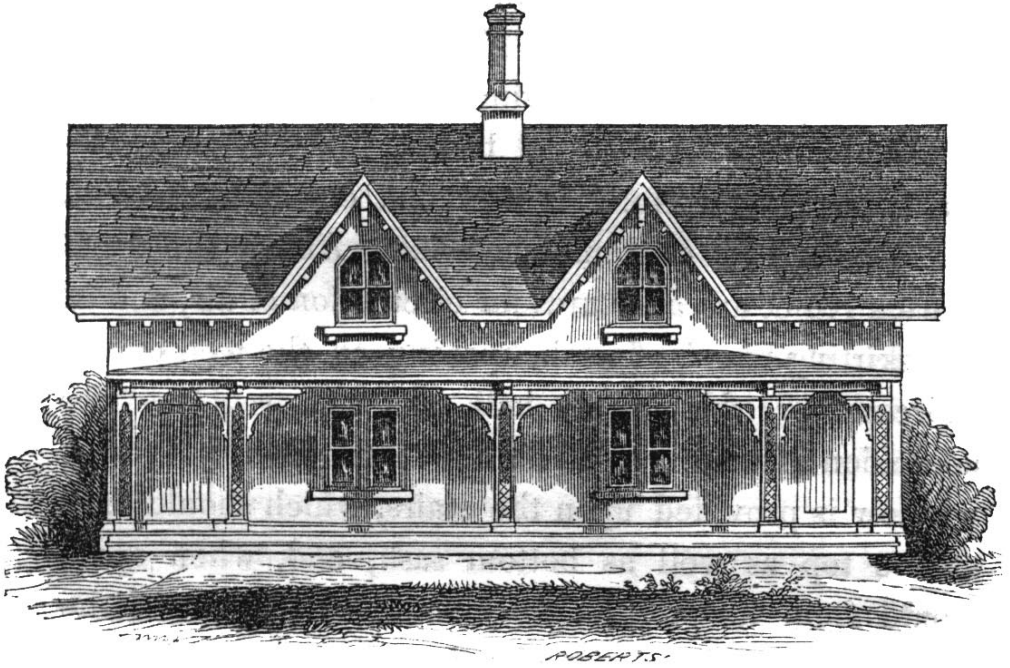
PL. LXXII.—ELEVATION.

RUSTIC PARSONAGE OR COTTAGE

Plan of Principal Floor PL. LXXI: The ground plan represents a cross-formed building, divided into apartments as follows: **No. 1**, is a rustic porch, 13' x 7', formed by the overhanging projection, containing a room on the second-floor, surmounted by a gable. The entrance door leads from this porch into a hall, **No. 2**; on one side is a living-room, **No. 3**, 15' x 15'; and upon the other, a library or bed-room, **No. 4**, 15' x 15'. The kitchen, **No. 5**, 13' x 11', having attached to a good sized scullery and sink-room, **No. 6**, in which is a safe for food, **No. 8**, and from the kitchen is a store-closet, **No. 7**. If wished, **No. 6** could be used as a kitchen, **No. 4** the dining-room, **No. 5** a sleeping-room and **No. 3** the library or study.



PL. LXXI.—RUSTIC PARSONAGE OR COTTAGE—PLAN.



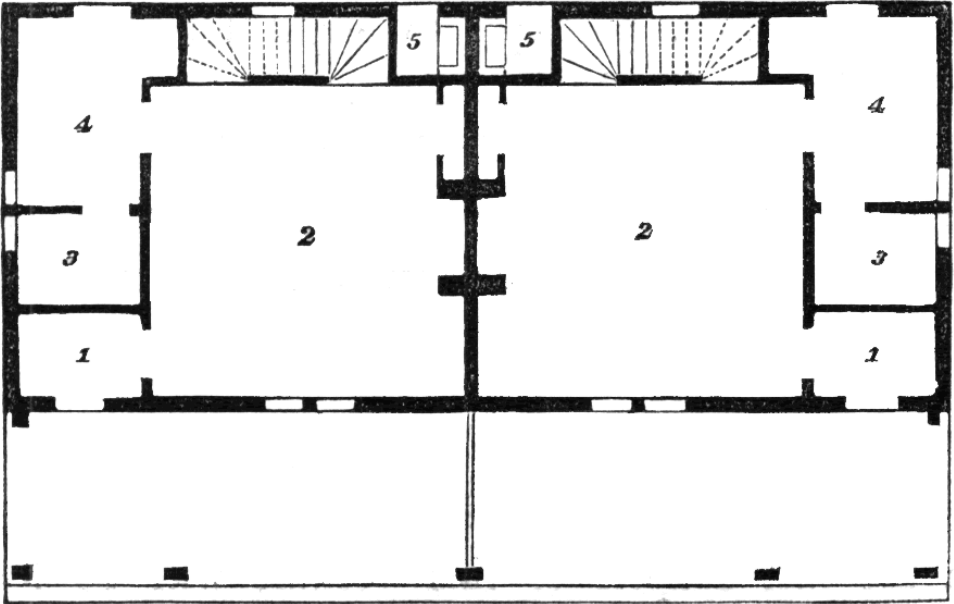
PL. LXXV.—DOUBLE COTTAGE—EXTERNAL VIEW.

DOUBLE COTTAGE

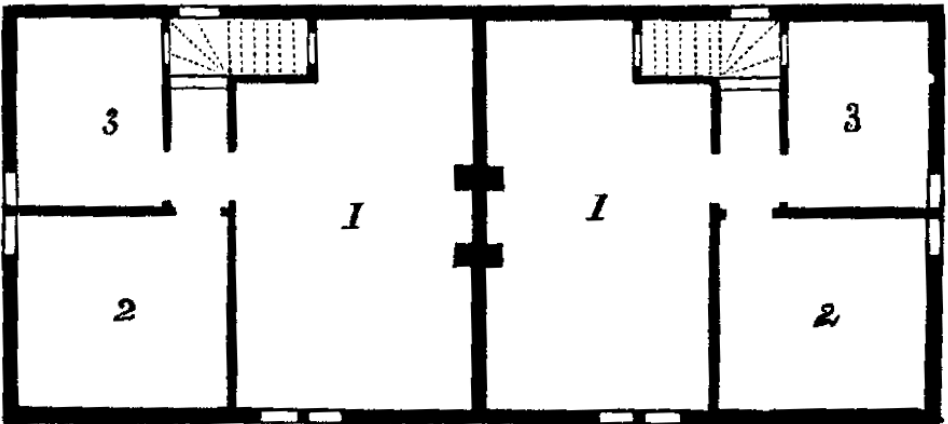
Small houses so contrived are in increasing demand. The following design illustrates a convenient plan by which two separate dwellings are comprised under one roof.

Plan of First Floor *PL. LXXIII:* The plan represents a parallelogram consisting of a double square, each half of which is twenty-two feet, forming in all a building 44' x 22'. inside dimensions in the clear. The chimney for each half is in the party-wall between. On the outer corner is an entry, **No. 1**, containing the front door, and fitted with hooks and other conveniences for outdoors garments; in this is space for a wash-stand for use of the men of the family, when returning home for their meals. A large family living-room, **No. 2**, 16' x 16', having a fireplace and by its side a closet for wardenware. By the side of the kitchen is a large inner closet, **No. 3**, and opening from a sink-room and scullery, **No. 4**, which contains an outer door, and in the recess by it a sink. Entered from the outside the building is a necessary, **No. 5**, so arranged as to come next that of the other building, and thus constructed over but one vault.

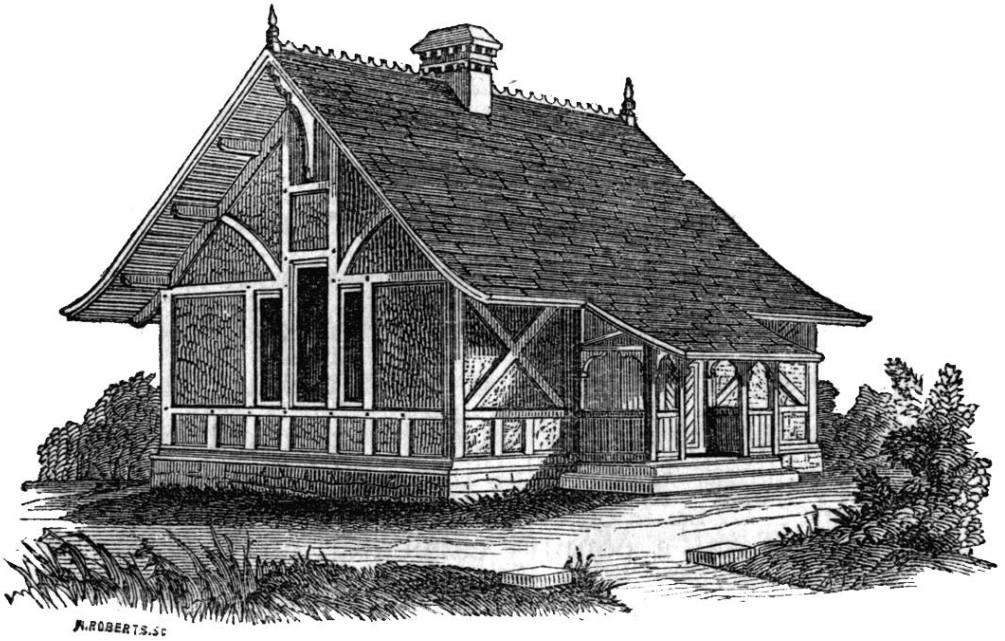
Plan of Chamber Floor *Pl. LXXIV*: The space upon the second floor is used in the most economical manner, as the plan testifies. The staircase leads to a small hall, from which doors conduct to a large chamber, **No. 1**, in one end of which is a recess for the bed, leaving space in the remainder of the chamber for a second bed, if the number in the family required. **No. 2**, is a second chamber, and **No. 3**, adjoining it, is of diminished size.



PL. LXXIII.—DOUBLE COTTAGE—PLAN OF FIRST FLOOR.



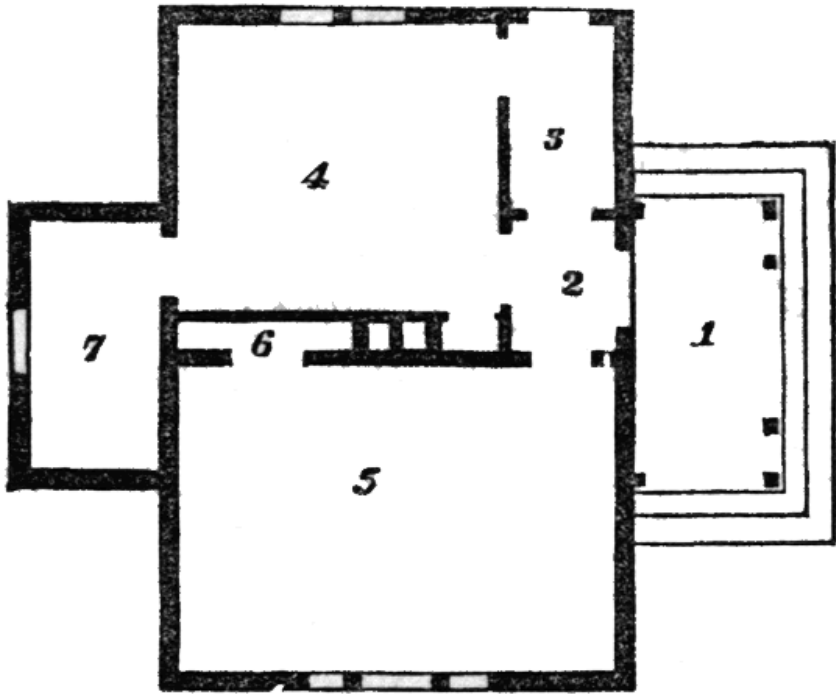
PL. LXXIV.—CHAMBER FLOOR.



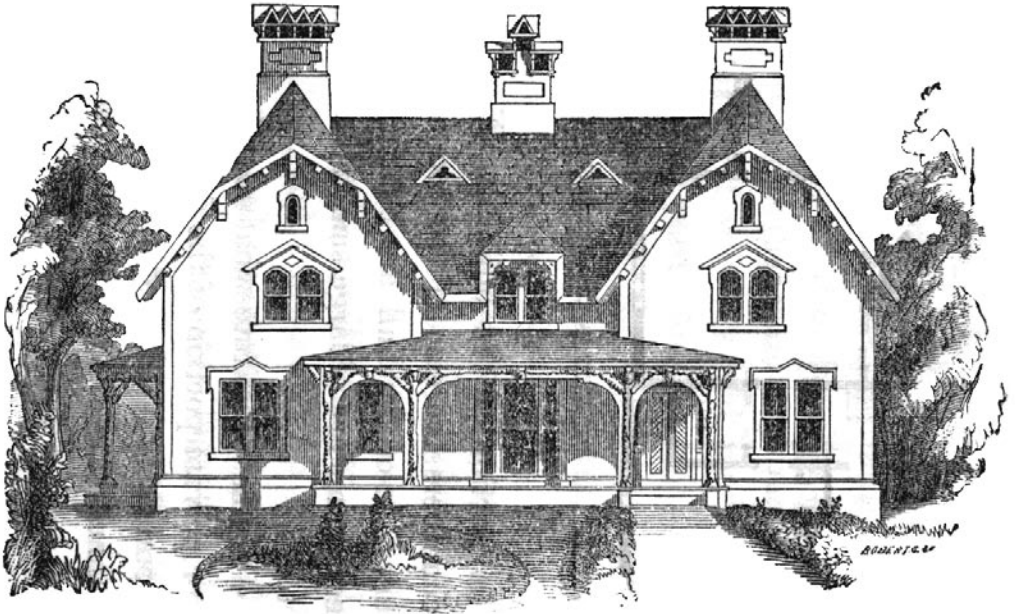
PL. LXXVII.—EXTERIOR.

SINGLE COTTAGE

Plan of Principal Floor PL. LXXVI: The plan is a parallelogram, 15' x 24' within the walls, and on either side is a wing, not, however, intended to be carried above this floor, should the occupants at any future time determine to extend their accommodation by adding a floor above the main building. Upon the side is a large open porch, or stoop, **No. 1**, 7' x 11', protected by a shelving roof, which overhangs the front and sides. From this a door opens into an entry, **No. 2**, which gives access to the various portions of the cottage. Of these, **No. 3**, is a sink-room, with an outer door to the yard. The living-room, **No. 4**, 11' x 10' with a closet by the side of the flues, provided for the cooking-stove, &c. In front is a large room, **No. 5**, 15' x 10', intended as a sleeping-room, and provided with a large closet, **No. 6**. At the side is a smaller sleeping-room, **No. 7**, 7' x 12', and is made to connect with the living-room. This room is intended as a separate sleeping-room for such occupancy as the family may require.



PL. LXXVI.—SINGLE COTTAGE—PLAN.



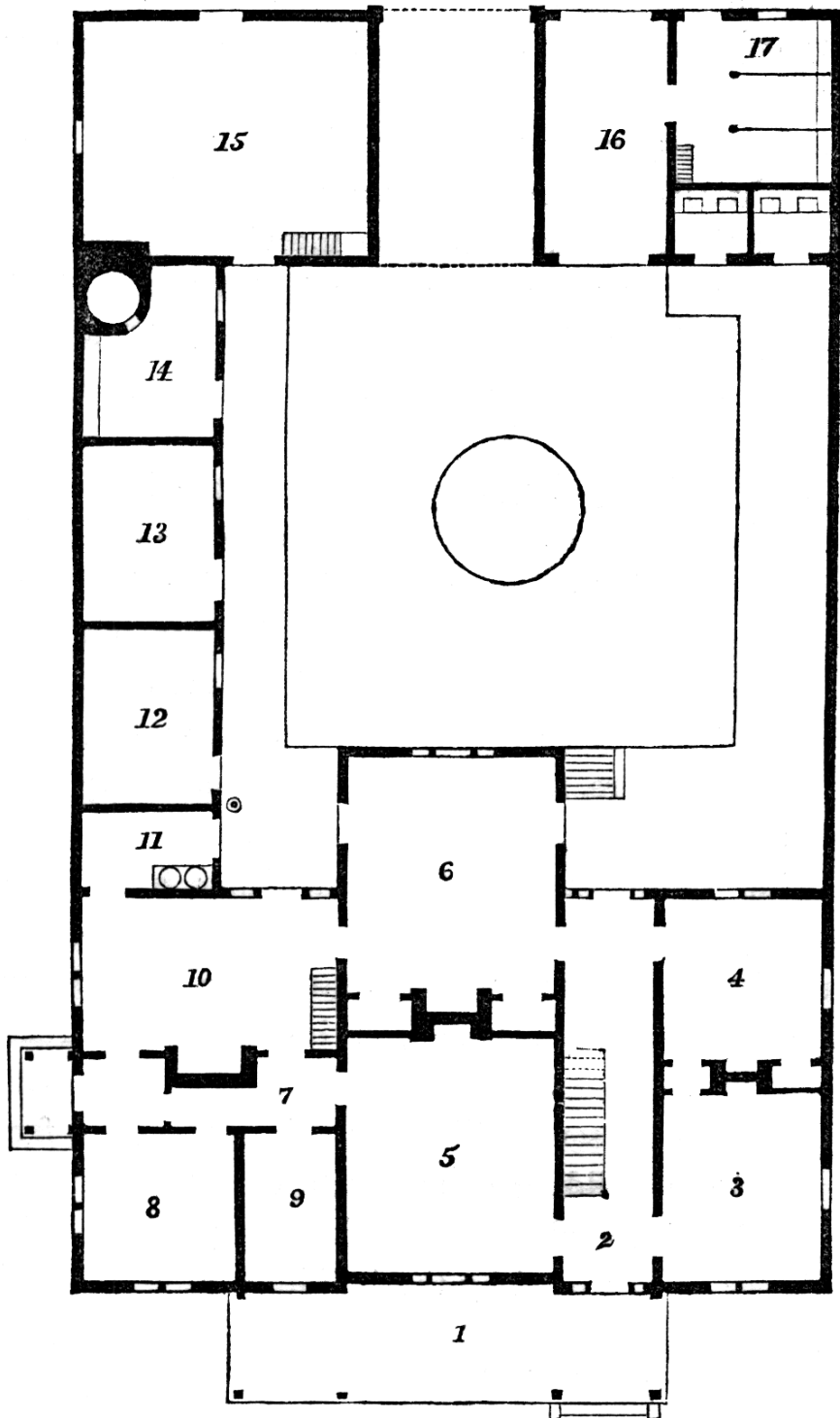
PL. LXXX. — ELEVATION.

HOUSE ON A FARM

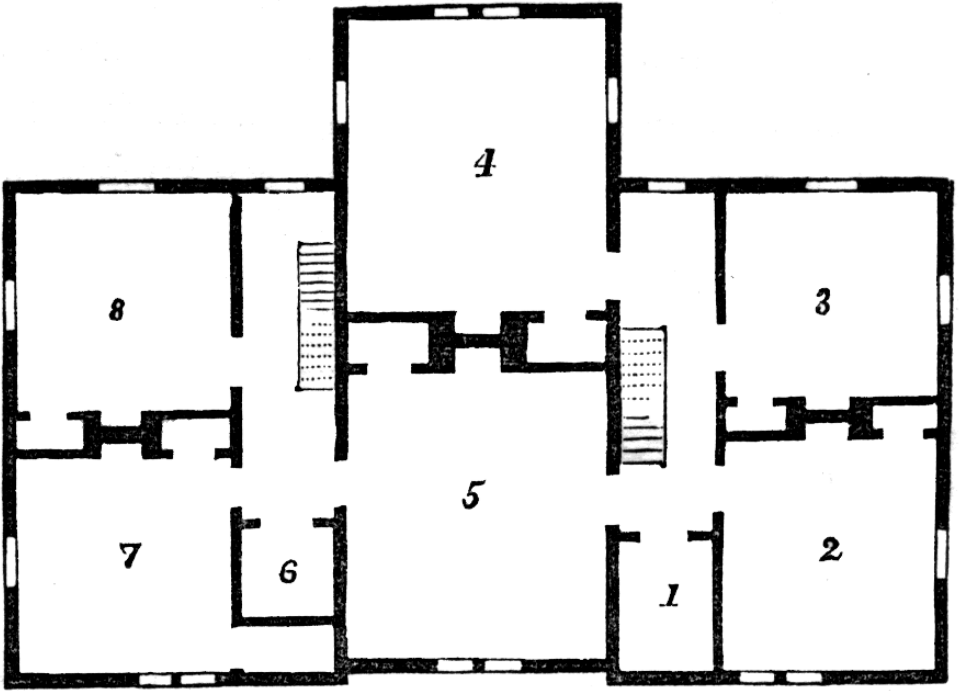
Plan of Principal Floor and Home Yard PL. LXXVIII: The plan chosen to illustrate a house upon a farm, represents a building of moderate extent, forming the front of an inclosed area, of which the prolonged sides and rear are occupied by the buildings attached to the dwelling. The building proper is 58' frontage, and the whole inclosure 100' in depth, exclusive of the space covered by the veranda in front, **No. 1**, 34' x 10'. From this an outer door opens into an entrance hall, **No. 2**. Upon one side is a private parlor, **No. 3**, 12'6" x 14', and in the rear is a sleeping-room, **No. 4**, of the same dimensions, with closets between. These rooms, with the hall and staircase, constitute the strictly private portion of the dwelling for the leisure use of the family. Connecting these with the rest of the house is a large general sitting-room, **No. 5**, 16' x 20', and in its rear a best kitchen or dining-room, **No. 6**, of the same dimensions. Upon the other side of the dwelling is an entry, **No. 7**, from which a passage conducts to a side porch, which may be considered the business entrance to the home, as that in front is made the private door for the family. Upon one side of the passage is a business room, **No. 8**, for the use of the farmer, and next to it is a large store-room, **No. 9**. Upon the other side is a second kitchen or work-room, **No. 10**, of ample size with oven and fireplace. Of the outbuildings at the side, **No. 11**, is a wash or sink-room, so placed as to permit its use by the men when coming from

their work at meal-times, before entering the house. Next to this is, **No. 12**, a milk-room, properly fitted with shelves and floored with cement or brick. Beyond is a fruit-room, **No. 13**, made in the same manner as an ice-house would be built, and rendered perfectly dry and well ventilated. **No. 14** is a feed-house, with boiler for preparation of food. These buildings are all lighted upon the inner side, and have the roof projecting beyond the eaves in such a manner as to protect a walk extending along them, which leads to the wood-house, **No. 15**. The dimensions of each of these outbuildings are 12' x 15', and the wood-house is 22' x 20', with a stairway to the smoke-house above. Between the latter and the building, on the corresponding side, is an open passage-way, with a light pair of double gates on the outer side, sufficiently wide to admit a team to pass in case of need. Next to this is a private wagon-house, **No. 16**, for the pleasure wagon used by the family, with double doors at each end, and next to it is a three-stalled stable, **No. 17**, for the same purpose. A covered trellis walk leads from the house to this outbuilding, and in it are necessaries divided into two apartments. In the yard is an open space that should be smoothly gravelled, so that a vehicle could, if wished, be driven around it, and in the centre might be a small grass-plot, or better still, a bed filled with fragrant flowers, and protected by a neat wire trellis about eighteen inches in height.

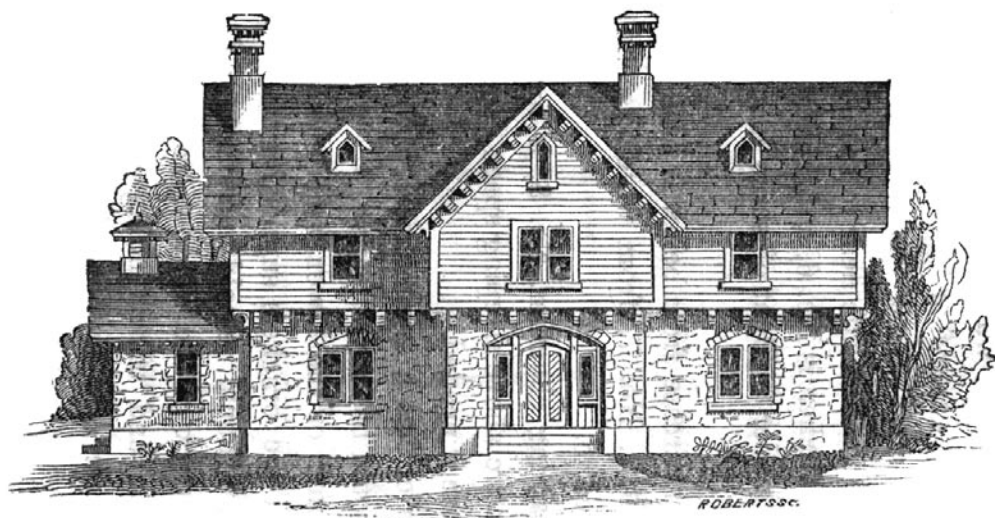
Plan of Chamber Floor PL. LXXIX: The staircase leading from the private hall ascends into an upper entry lighted by a window in the rear, and having at its front end a large linen closet, **No. 1**, which is lighted by a heavy glass inserted in the roof, the sides of the gable of which come down immediately over this portion of the building. **No. 2** and **No. 3** are large chambers the size of the rooms below, and upon the other side of the hall are sleeping-rooms, **No. 4** and **No. 5**. All these rooms are of large size and attached to each is a closet. These rooms constitute what may be considered the family or private portion of the dwelling upon this floor, and beyond them is a hall with back staircase, arranged in a manner similar to that upon the other side, and provided with a large closet, **No. 6**, a portion of the space of which is made a large additional closet attached to the sleeping-room, **No. 7**. In the rear of this, **No. 8**, a spacious chamber, and provided with closet. These rooms would be for the hired female help employed within the house; and in the space above, left by the rise of the roof, is ample room for comfortable sleeping-chambers for the men, with a stairway, connected therewith, above the back staircase in this portion of the plan.



PL. LXXVIII.—HOUSE ON A FARM WITH HOME YARD—PLAN.



PL. LXXIX.—CHAMBER FLOOR.

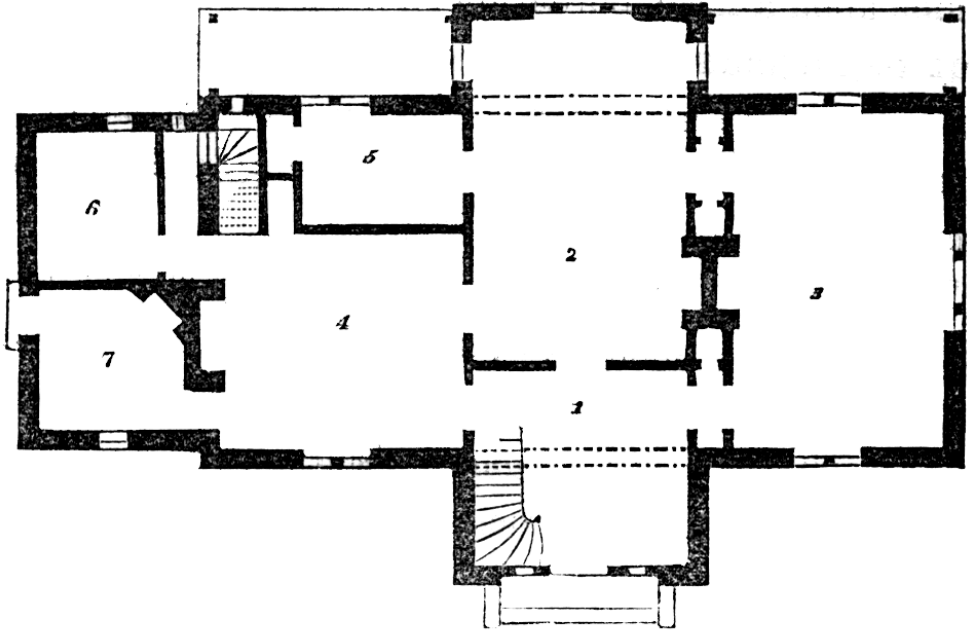


PL. LXXXIII.—FARM-HOUSE REMODELLED—ELEVATION.

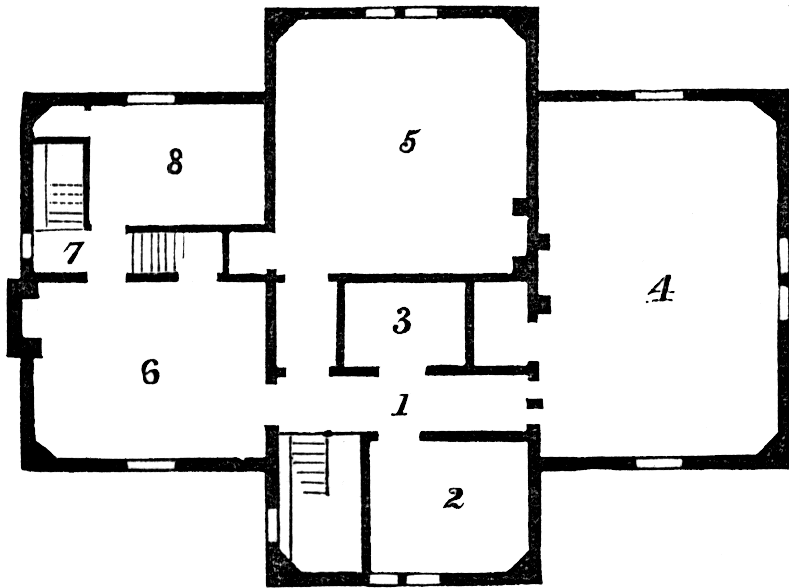
STONE FARM-HOUSE REMODELED

Plan of Principal Floor PL. LXXXI: This stone building was erected upon a farm, bordering on the Hudson, in a fertile part of Dutchess County, New York. The walls are solid and of great age. The masonry will not safely permit a heavy superstructure to be raised upon the walls, sufficient to elevate the rooms below, and give pleasant chambers above, and therefore a lighter material than stone is desirable for the upper story. The plan shows the building as remodelled. Hall, **No. 1**, is an entry, from it is the dining-room, **No. 2**, 14' x 22'. Upon one side is a parlor, **No. 3**, 21' x 14'6". Upon the other side is the kitchen, **No. 4**, 16' x 15'; near to this, and connected with the dining-room, is a bed-room, **No. 5**. In the space by the side of this is a staircase to cellar and upper floor, and closets to the bedroom and kitchen. At the end is a one-story building, containing a large store-room, **No. 6**, and a scullery and sink-room, **No. 7**.

Plan of Chamber Floor PL. LXXXII: Upon one side of an upper hall, **No. 1**, is a sleeping-room, **No. 2**, 9' x 10', and opposite this is a linen and store closet, **No. 3**. **No. 4** is a family chamber, 16' x 24'. A large room, **No. 5**, is above the dining-room, and has a closet. Over the kitchen is **No. 6**, and has attached to it a closet made under a flight of stairs from entry, **No. 7**, leading to the attic. The remaining chamber, **No. 8**, is for the servants.



PL. LXXXI.—STONE FARM-HOUSE REMODELLED—PLAN.



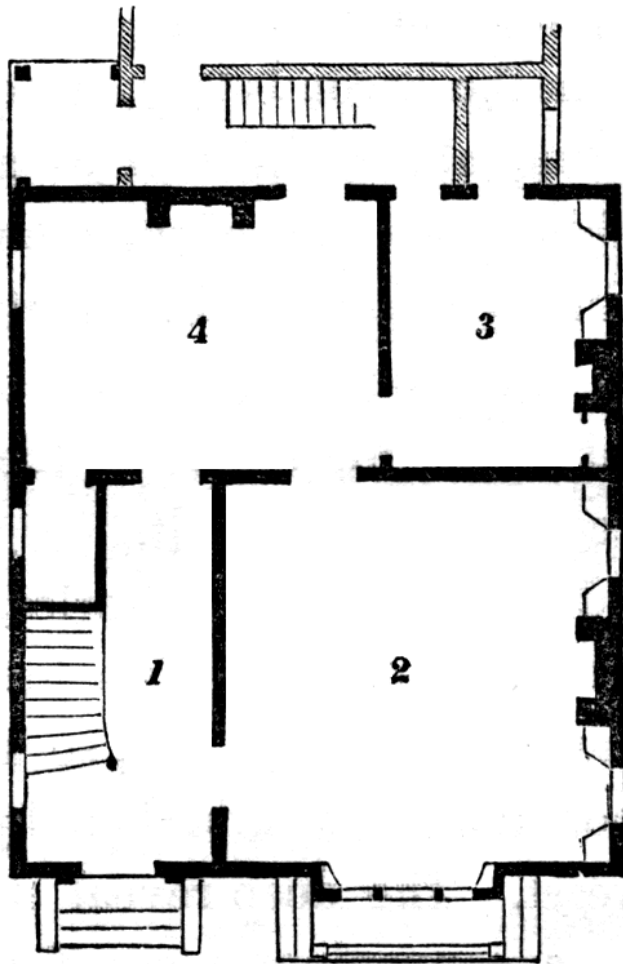
PL. LXXXII.—CHAMBER PLAN.



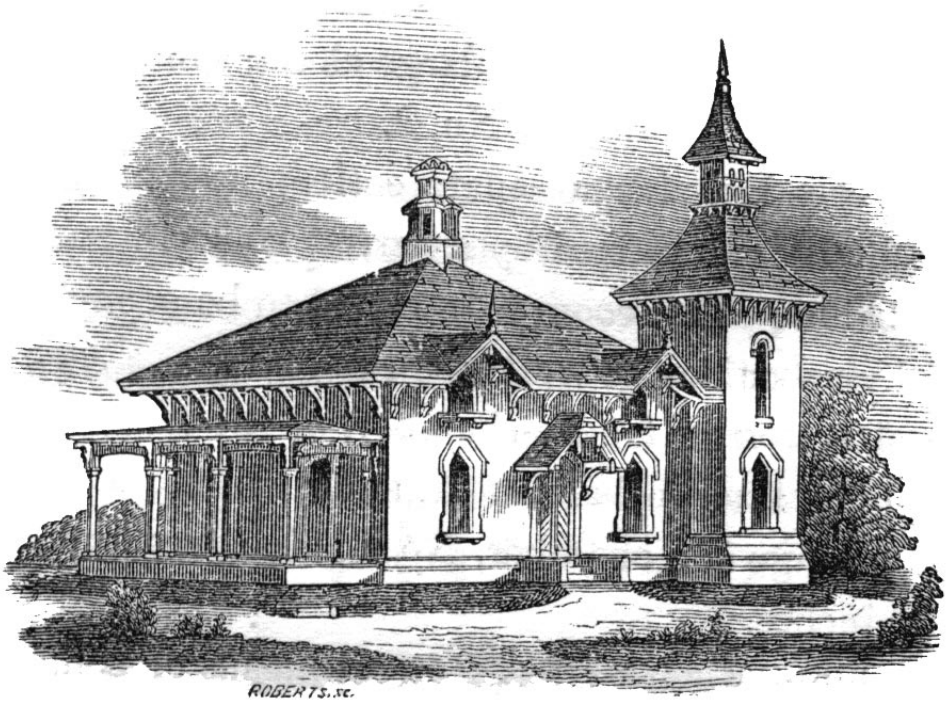
PL. LXXXV.—ADDITION TO AN OLD HOUSE—ELEVATION.

ADDITION TO AN OLD HOUSE

Plan of Principal Floor PL. LXXXIV: A square block, 32' x 36' is added to the front of an old building, which is not represented, as the arrangement stands unaltered. The entrance hall, **No. 1**, is 10' x 20'. Above this upon the second-story, a square partition is made projecting above the roof as a dwarf tower, a feature desirable on account of the view, and essential to prevent a clumsy effect by the junction of the new building to the older portion, which, being lower in height, required some gradations in the elevated portions to produce picturesque result. Upon one side of the hall is a parlor, **No. 2**, 20' square, and in the rear of the parlor, a chamber, **No. 3**, 10' x 14' with a door communicating with an entry, which forms a portion of the old house. The dining-room, **No. 4**, is 20' x 14'. Beyond this new part of the building is an entry, connecting it with the kitchen and other rooms in the old house.



PL. LXXXIV.—ADDITION TO AN OLD HOUSE—PLAN.

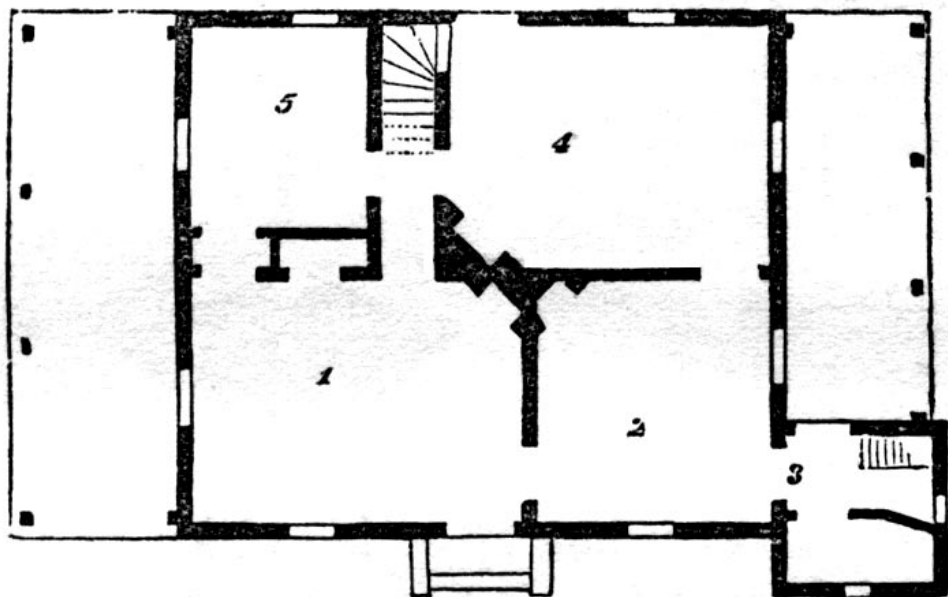


PL. LXXXVIII.—EXTERNAL VIEW.

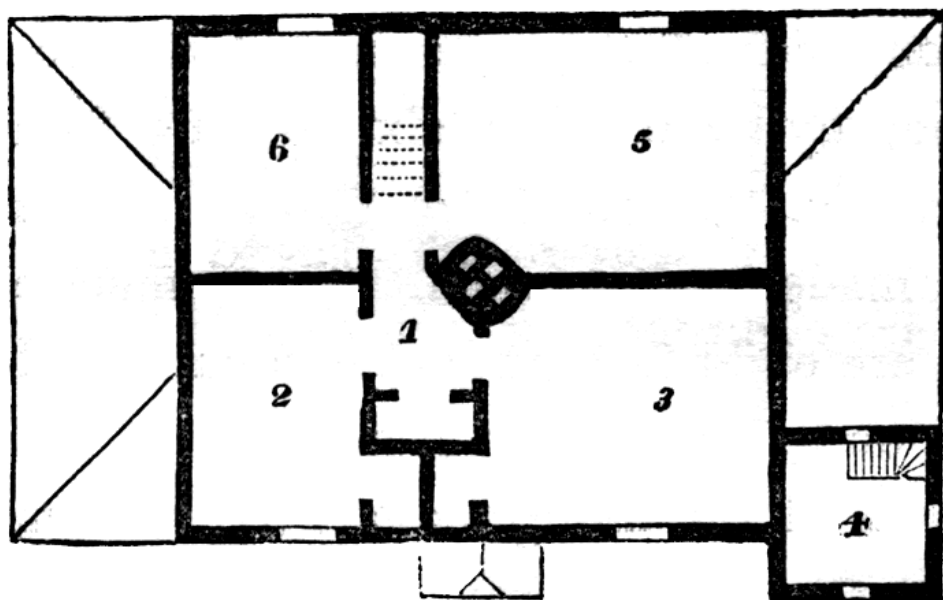
OLD HOUSE INTO A GATE-HOUSE

Plan of Principal Floor PL. LXXXVI: Oftentimes, a farmer has upon his place an old building, the frame of which is sufficiently good to permit a thorough change to the plan, and place it where the altered building may serve some other purpose. The intention in this case is to use it as a gate-house. The frame is 30' x 26'. Upon one corner a small square turret is added. The object of the tower is to form a porch for side-entrance; and to permit the gate to be brought more immediately under the command of the occupants of the cottage. For other purposes the plan is complete without this feature, and is thus arranged: Parlor, **No. 1**, 16'6" x 12'6"; Living-room, **No. 2**, 12' x 12'6"; entry, **No. 3**, formed by the tower, 8'6" x 8'6", one half which is made a store room; kitchen, **No. 4**, 6'6" x 12'6"; bed-room, **No. 5**, 9' x 10'6". there is an out-building, 10' x 13', containing wood-shed and necessary, and finished in a rustic manner to harmonize with the dwelling.

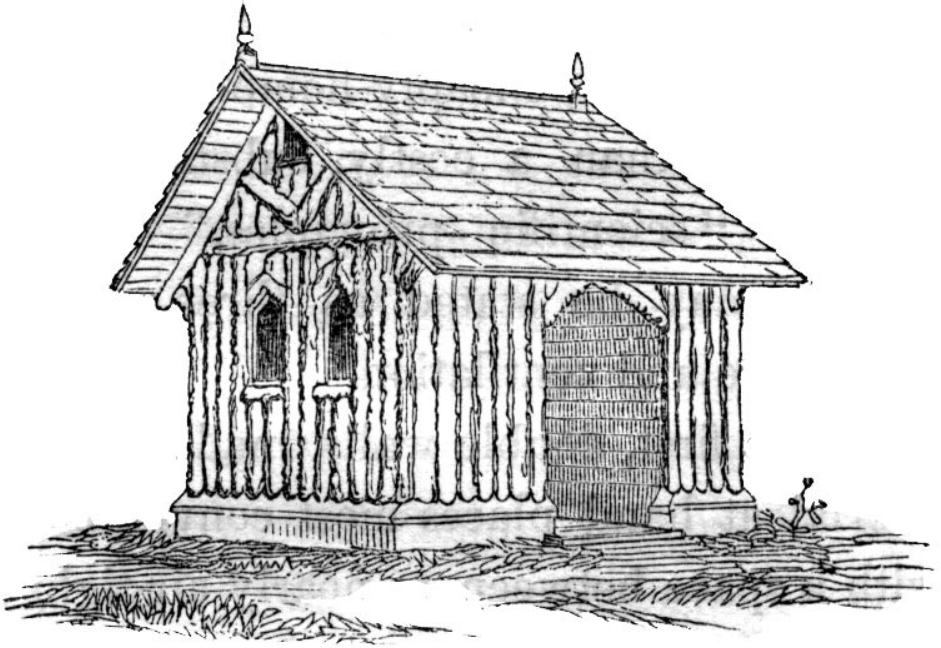
Plan of Chamber Floor PL. LXXXVII: the landing, **No. 1**, is nearly in the centre of the house. A chamber, **No. 2**, is 9' x 12'6"; large room, **No. 3**, having a large closet; the tower contains a sleeping-room, **No. 4**; a large family chamber, **No. 5**; and a chamber, **No. 6**, 9' x 12'6".



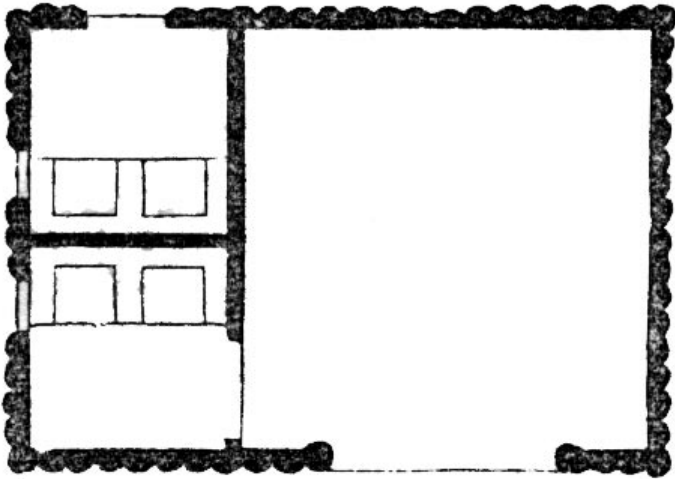
PL. LXXXVI.—OLD FRAME-BUILDING CONVERTED INTO A GATE-HOUSE— PLAN.



PL. LXXXVII.—CHAMBER PLAN.



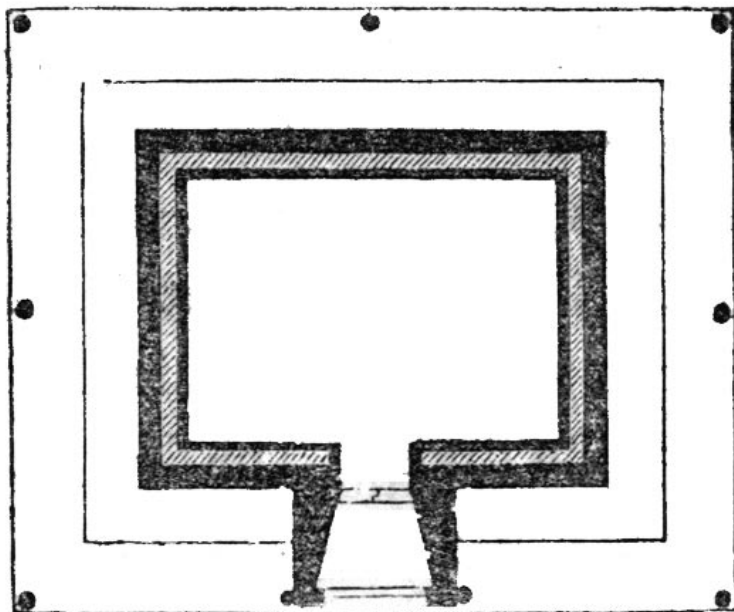
PL. XCII.—EXTERIOR.



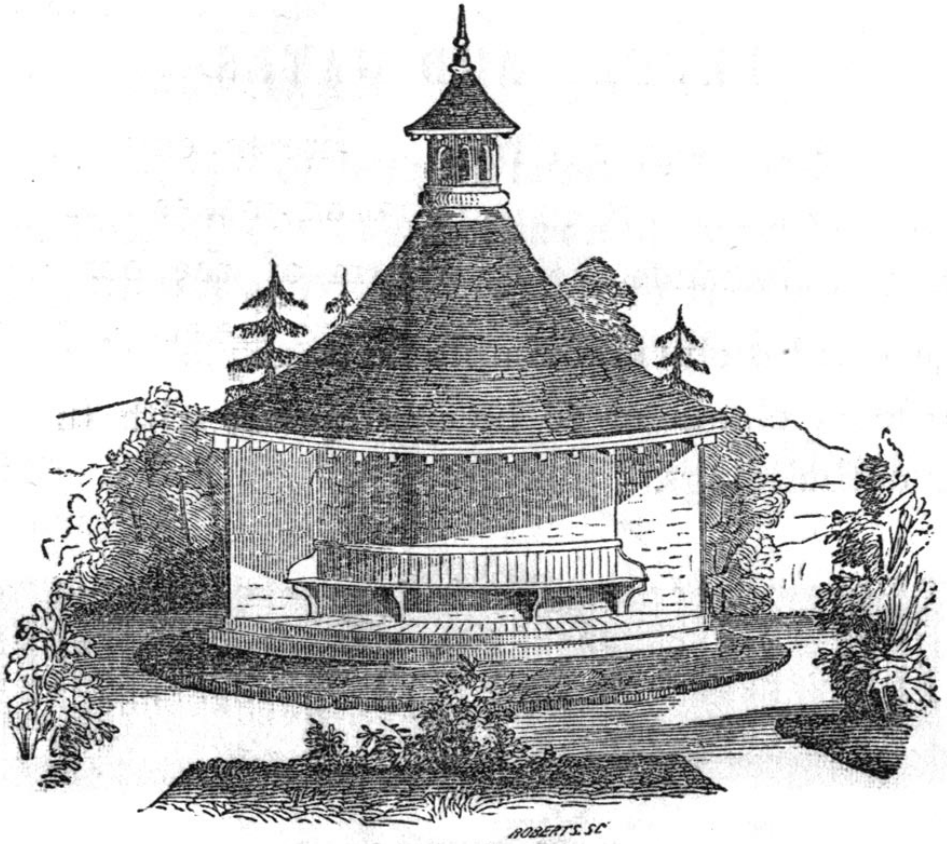
PL. XCI.—OUTBUILDING—PLAN.



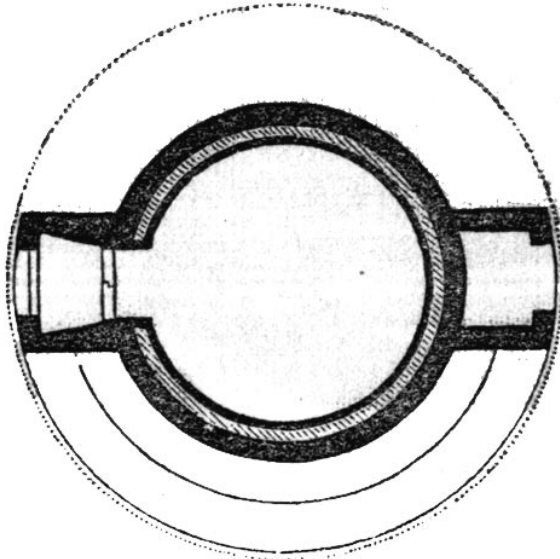
PL. XCIV.—ELEVATION.



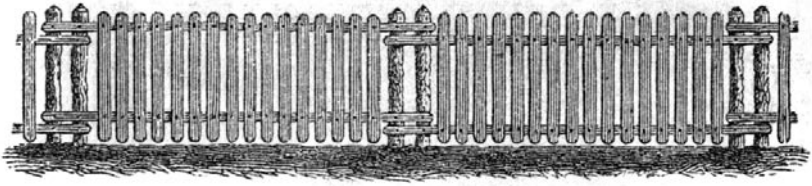
PL. XCIII.—ICE-HOUSE—PLAN.



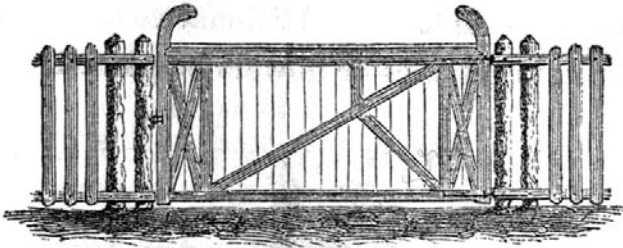
PL. XCVI.—ELEVATION.



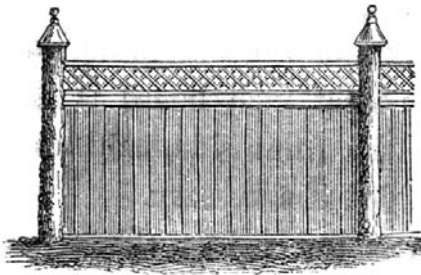
PL. XCV.—CIRCULAR ICE-HOUSE—PLAN.



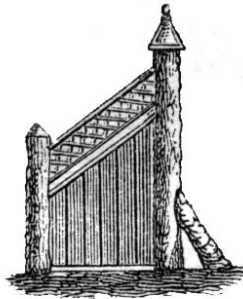
PL. XCVII.—RUSTIC FENCE.



PL. XCVIII.—RUSTIC GATE.



PL. XCIX.—GARDEN FENCE.



PL. C.—GARDEN FENCE—END VIEW.